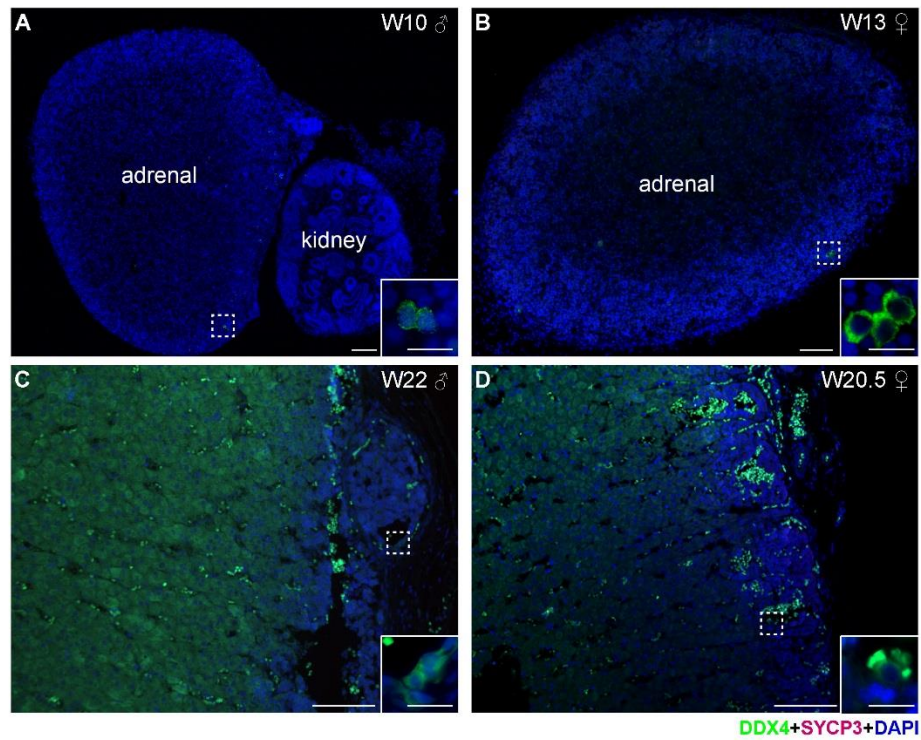
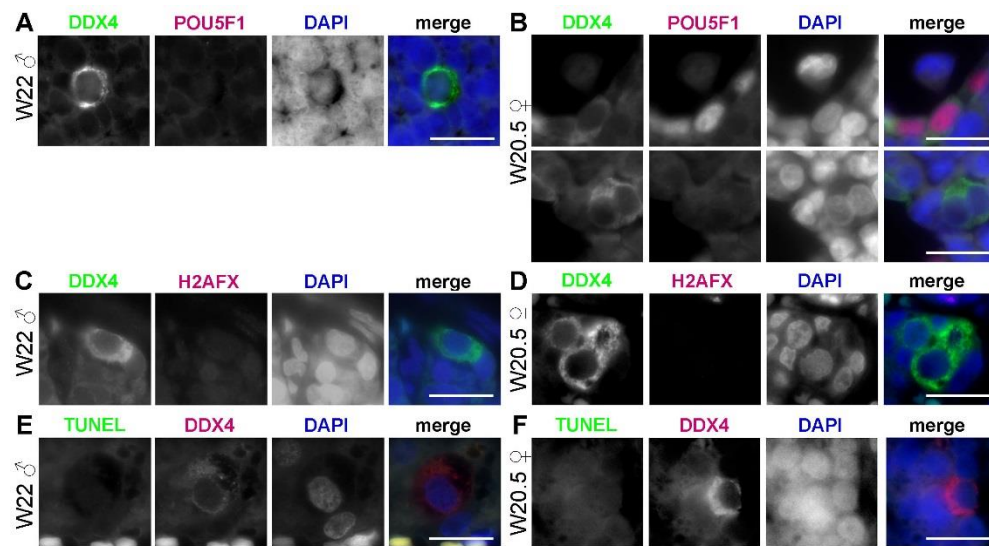


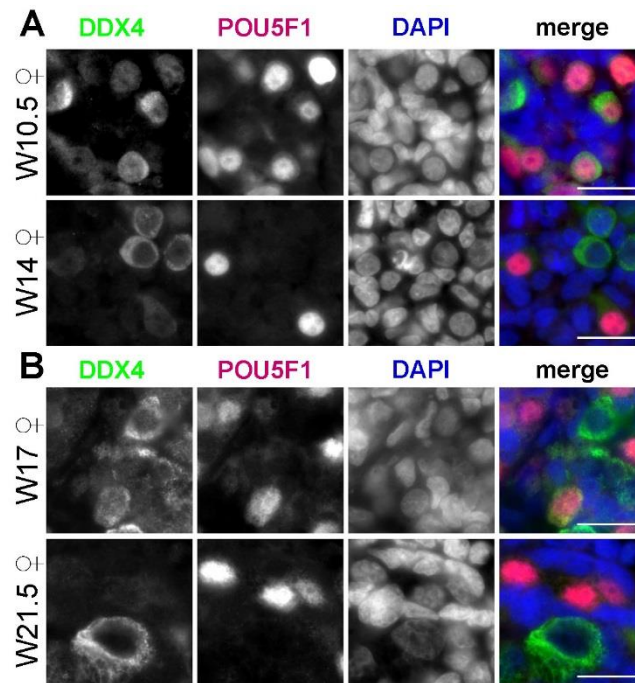
Supplementary Figure S1. Germ cells in first trimester human fetal adrenals. High magnifications of histological sections of human W10 male and W13 female adrenals in first trimester showing **(A,B)** single channels for DDX4, POU5F1, DAPI and merged; **(C,D)** single channels for DDX4, H2AFX, DAPI and merged; **(E,F)** single channels for TUNEL, DDX4, DAPI and merged. Scale bars are 20 μm .



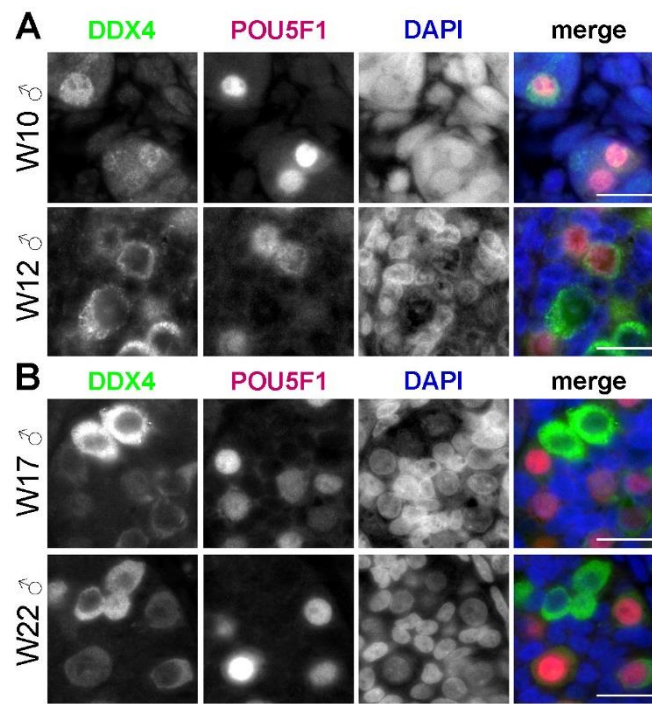
Supplementary Figure S2. No meiotic entry in germ cells in human fetal adrenals. Histological sections of human adrenals first trimester W10 male (A) and W13 female (B) and second trimester W22 male (C) and W20.5 female (D). DDX4 (in green) germ cells do not express the meiotic marker SYCP3 (in red). Inserts are magnifications of the dotted box. Note the presence of autofluorescent red blood cells. Scale bar is 100 μ m and in inserts 20 μ m.



Supplementary Figure S3. Germ cells in second trimester human fetal adrenals. High magnifications of histological sections of human W22 male and W20.5 female adrenals in second trimester showing **(A,B)** single channels for DDX4, POU5F1, DAPI and merged; **(C,D)** single channels for DDX4, H2AFX, DAPI and merged; **(E,F)** single channels for TUNEL, DDX4, DAPI and merged. Scale bars are 20 μm .



Supplementary Figure S4. Germ cells in human fetal ovaries. High magnifications of histological sections of human W10.5 and W14 (**A**), W17 and W21.5 (**B**) female gonads showing single channels for DDX4, POU5F1, DAPI and merged. Scale bars are 20 μ m.



Supplementary Figure S5. Germ cells in human fetal testes. High magnifications of histological sections of human W10 and W12 (**A**), W17 and W22 (**B**) male gonads showing single channels for DDX4, POU5F1, DAPI and merged. Scale bars are 20 μm.

Table S1. Number and sex of human organs analysed

Embryo ID	Sex	Age (weeks of gestation)	Adrenal	Gonad
AV1	male	W8.4	x	
AH1	male	W9.3	x	
BG2	male	W10	x	x
AC1	male	W11	x	
AT1	male	W12	x	x
V1	male	W12	x	
AE2	male	W14.2		x
AZ1	male	W15.4	x	
CV2	male	W16.5	x	
CQ1	male	W17	x	x
CX1	male	W18	x	
CT1	male	W20		x
BW1	male	W22		x
CR1	male	W22	x	
AQ1	female	W8.6	x	
AG1	female	W9.1	x	
AY1	female	W9.6	x	
AI3	female	W10.4	x	
BA2	female	W10.5	x	x
AQ2	female	W11.4	x	
DR3	female	W13	x	
CE1	female	W14		x
DD2	female	W16	x	
DK2	female	W16.3		x
BE1	female	W17		x
BQ1	female	W17.4	x	x
CC2	female	W18	x	
DJ2	female	W18		x
AL3	female	W20		x
CD1	female	W20.5	x	
BM2	female	W21	x	
DW3	female	W21.5		x
Total			23	14