

Fig. S1. Alternative intracellular distribution of constitutively active and dominant negative forms of Rab11. (A-C) Confocal micrographs of cross-section through the fat body cells showing Rab11-YFP vesicles (green in A-C; greyscale in A'-C') in relation to the plasma membrane outlined by CellMask™ Deep Red (red in A-C). Representative larval fat body cells were from the following genotypes: (A-A'; *Rab11*^{WT}) wild-type control of Rab11, (B-B'; *Rab11*^{Q70L}) GTP-bound constitutively active form of Rab11 and (C-C'; *Rab11*^{S25N}) GDP-bound dominant negative form of Rab11. Arrowheads depict large Rab11 endosomes (C). Arrows depict small Rab11 vesicles at the plasma membrane (A, B). Scale bar: 5 μm.

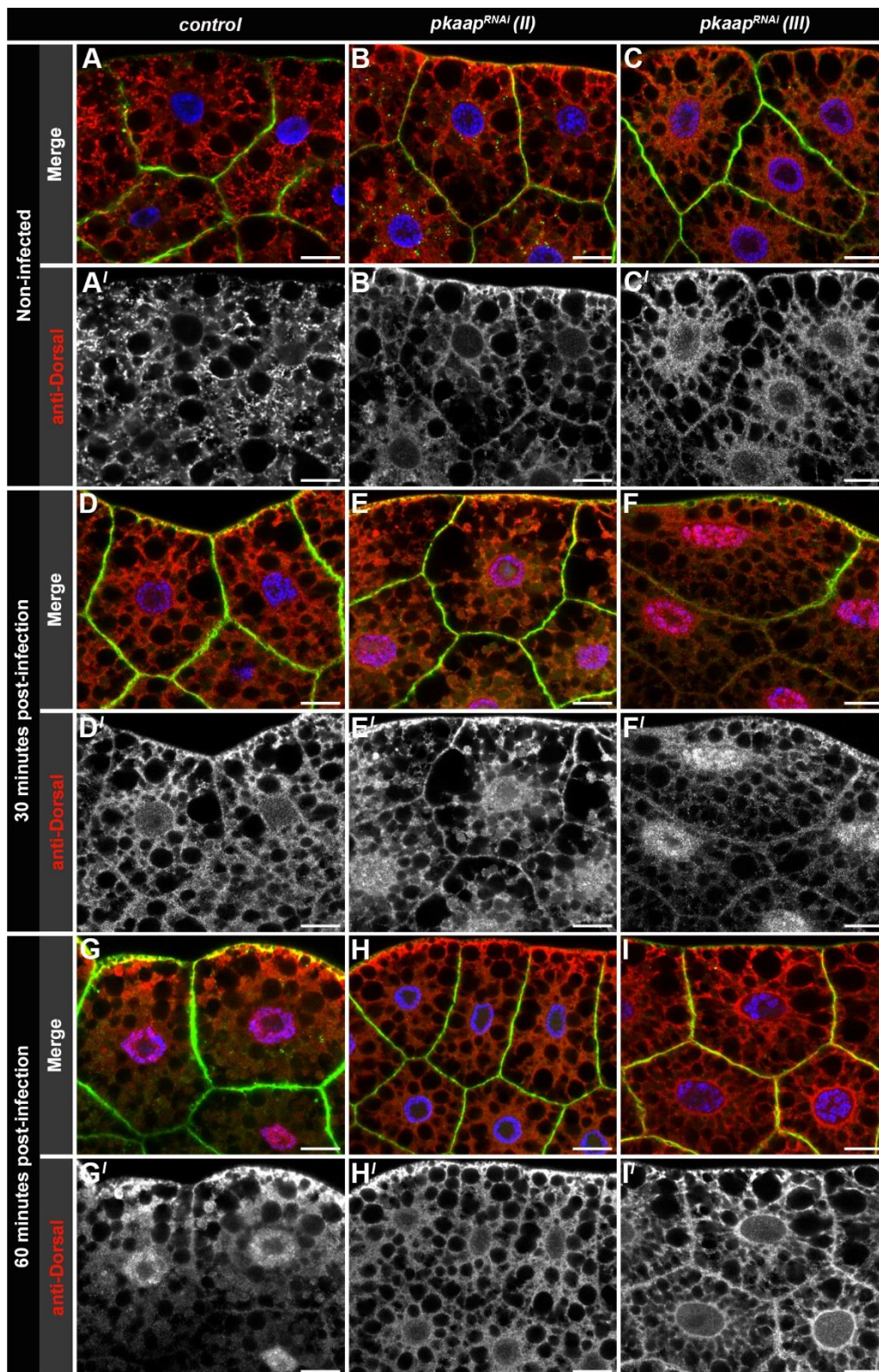


Fig. S2. *pkaap* depletion does not affect translocation of Dorsal to the nuclei upon bacterial challenge. (A-I) Micrographs of confocal cross-sections through the fat body cells outlined by Alexa Fluor® 488 Phalloidin (green in A-I) showing the cellular distribution of

the transcriptional factor Dorsal detected by anti-Dorsal antibody (red in A-I, greyscale in A'-I') relative to nuclei (Hoechst 33258 DNA stain, blue in A-I). Fat body cells were visualised from (A-C, A'-C') non-infected and larvae infected orally with *Micrococcus luteus* for (D-F, D'-F') 30 minutes and (G-I, G'-I') 60 minutes. Representative larval fat body cells were from the following genotypes: (A, D, G) control, (B, E, H) *pkaap*^{RNAi chromosome II} and (C, F, I) *pkaap*^{RNAi chromosome III}. Scale bar: 20 µm.

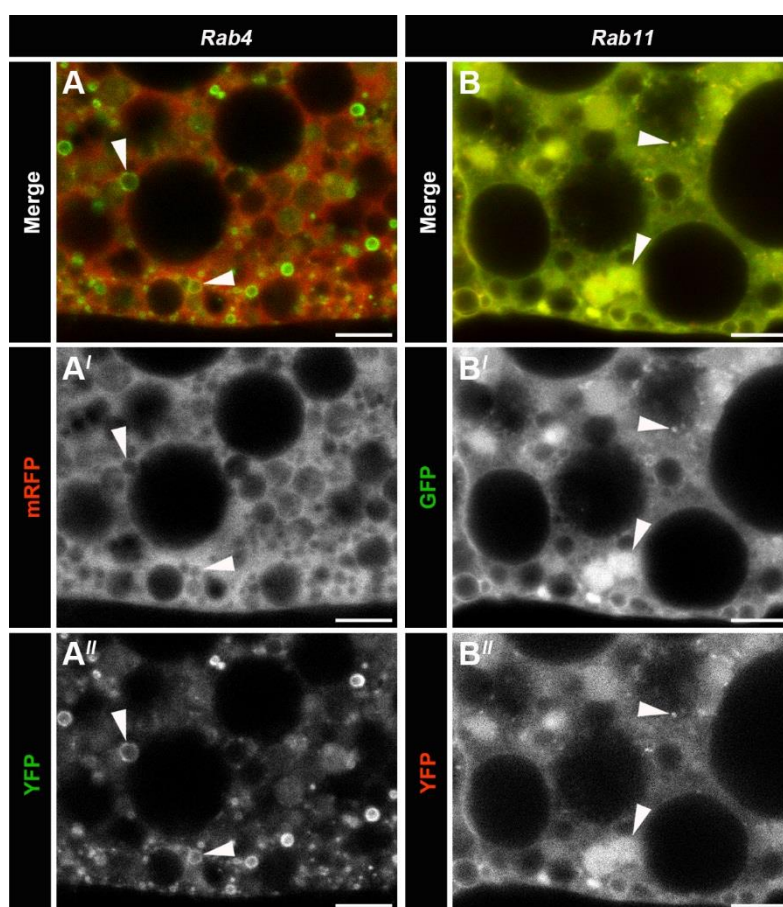


Fig. S3. Distribution of Rab4 and Rab11 endosomes is fully replicated in transgenic lines simultaneously expressing Rab4-mRFP/Rab4-YFP and Rab11-GFP/Rab11-YFP. (A, B) Micrographs of confocal cross-sections through the fat body cells showing the colocalisation of Rab4-mRFP (red in A, greyscale in A') with Rab4-YFP endosomes (green in A, greyscale in A''), and Rab11-GFP (green in B, greyscale in B') with Rab11-YFP endosomes (red in B, greyscale in B''). Arrowheads denote the double positive (A) Rab4-mRFP/Rab4-YFP and (B) Rab11-GFP/Rab11-YFP endosomes. Scale bar: 5 μ m.