

Supplementary Figure 1

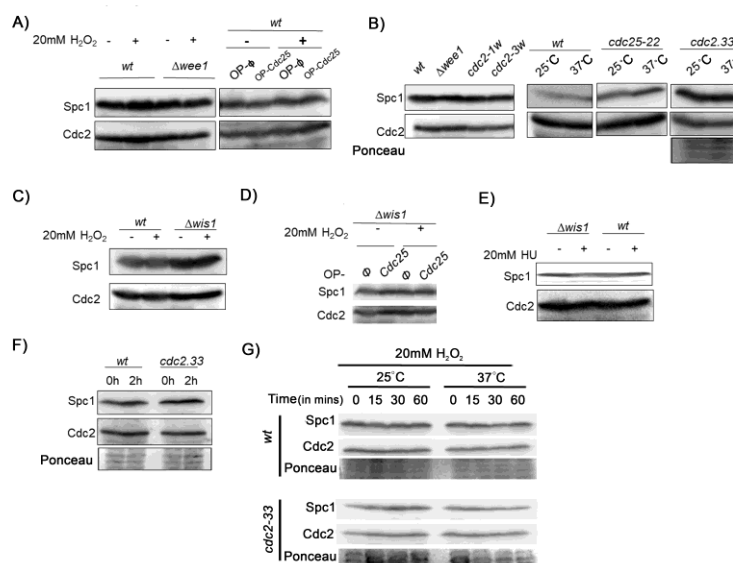


Fig S1. Spc1 levels remain unchanged with variations in Cdc2 activity. (A) Spc1 levels in *wt* and $\Delta wee1$ cells treated with 20mM H_2O_2 for 15 mins and in *wt* cells overexpressing pGS008(ϕ) or pGS009(Cdc25-GFP) and treated with 20mM H_2O_2 for 20 mins. Total Spc1 and Cdc2 protein levels in all cases determined by immunoblotting. (B) Spc1 levels in *wt*, $\Delta wee1$, *cdc2-1w*, *cdc2-3w* mutants and in *wt* and *cdc25-22*, *cdc2-33* at 25°C and 37°C (non-permissive temperature) (C) Spc1 levels in *wt* and $\Delta wis1$ cells treated with 20mM H_2O_2 for 15 mins. (D) Spc1 levels in *wt* and $\Delta wis1$ cells overexpressing pGS008(ϕ) or pGS009(Cdc25-GFP) and treated with 20mM H_2O_2 for 20mins. (E) Spc1 levels in *wt* and $\Delta wis1$ treated with 20mM HU for 15mins. (F) Spc1 levels in *cdc2-33 ts* mutant before (0 hr) and after release into permissive temperature (2 hrs) after being blocked at the non-permissive temperature. (G) Spc1 levels in *wt* and *cdc2-33 ts* mutant after treatment with 20mM H_2O_2 for the indicated time points at the indicated temperatures. Spc1 and Cdc2 protein levels in all cases determined by immunoblotting. Cdc2 levels were used as the loading control except for *cdc2-33 ts* for which total protein levels were used instead. All data are representative of three independent experiments.

Supplementary Figure 2

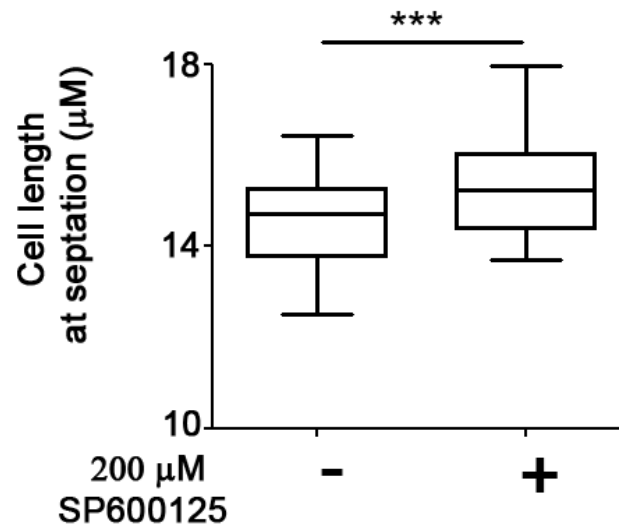


Fig. S2. Quantification of the length at septation of *wt S. pombe* cells before and after treatment with Spc1 inhibitor (SP600125) for 2 hr, using ImageJ software. *** $p < 0.001$ ($n > 100$). All data are representative of three independent experiments.