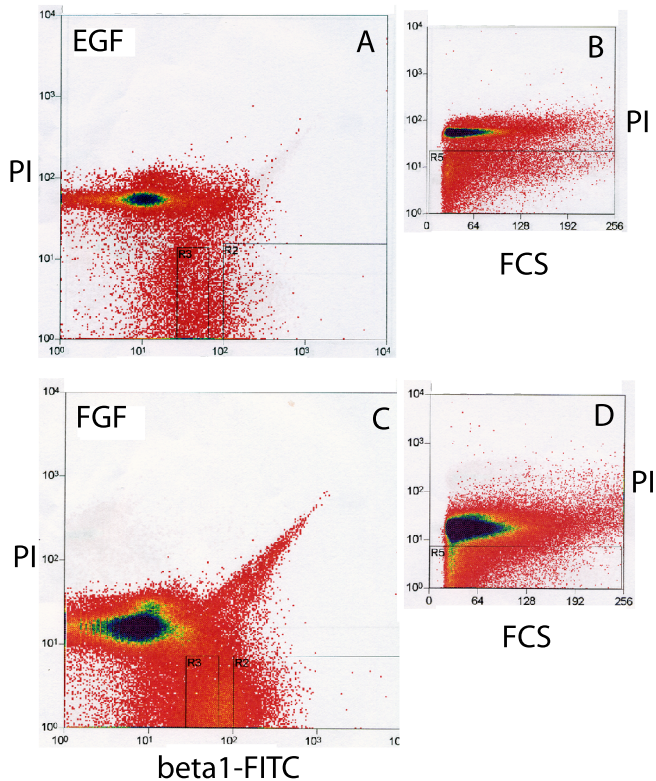


Campos et al - supplementary figure 1



A representative experiment showing the FACS profiles and gates used to compare the sphere-forming potential of cells grown in EGF (A) or FGF (C) and sorted for high $\beta 1$ expression (gate R2) or intermediate $\beta 1$ expression (gate R3) with unsorted cells grown in EGF (B) or FGF (D) from which a single gate (high propidium iodide (PI)-R5) was used to remove dead cells. See text for results.