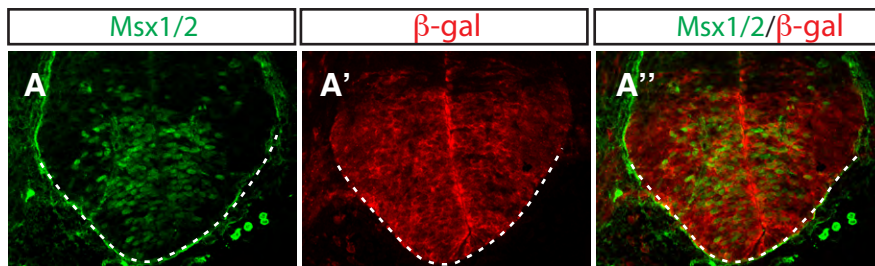
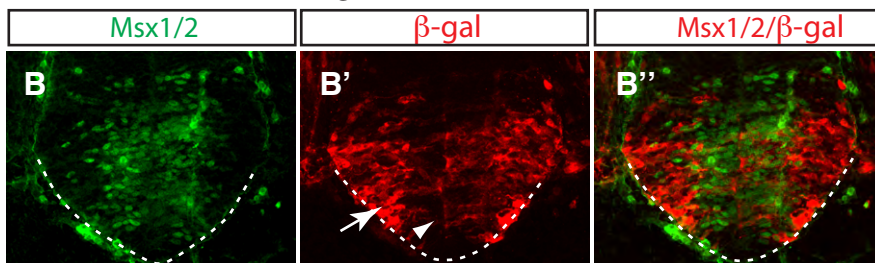


Olig1-Cre;Ctnn9^{of};R26R/+



percentage of co-staining:
96.1% (488/505, n=5)

Olig1-Cre;Ctnn9^{of};Tcf-lacZ



C. Percentage of ectopic *Msx1/2* or *Pax7* cells co-expressing β -galactosidase in *Gli1-CreER;Ctnn9^{of};Tcf-lacZ* embryos

	co-staining of <i>Pax7</i> / β -gal		co-staining of <i>Msx</i> / β -gal	
	E7.5	E8.5	E7.5	E8.5
Percentage	72.4% (95/127)	81.1% (60/74)	82.9% (247/298)	91.1% (263/292)
Sections	9	3	9	3

