

A

Hcdx1	1	MYVGYVLDKD	SPVYEGPARP	AS-LGLGPAN	YGPPAPPPAP	POYPDFFSSVS	HV-----	-EPAPAPPTA
Mcdx1	1	MYVGYVLDKD	SPVYEGPARP	SS-LGLGPPT	YAPPGAPAP	POYPDFAGYT	HV-----	-EPAPAPPPT
Hcdx2	1	MYVSYLDDKD	VSMYPSSVRH	SGGLNLAPON	FVS-----P	POYPDYGGYH	VAAAAAATAAN	LDSAQSPGGS
Mcdx2	1	MYVSYLDDKD	VSMYPSSVRH	SGGLNLAPON	FVS-----P	POYPDYGGYH	VAAAAAATAAN	LDSAQSPGGS
Xtcad2	1	MYVGYLDDKD	NMYPNPVRH	PG-LNLNPNON	YVP-----AP	POYSDFFPSVH	HVPGINS---	-DPHHGQPGG
Zcdx1b	1	MYVSYLDDKD	SSMYPNSVRH	PS-LNLNPNON	FVP-----AP	POYPDFETGVH	HVPGITTN--	-DPHHSQTGS
Hcdx1	61	WGAPFPAP-K	DDWAAAYGPG	PAAPAA----	-----SPA	SLAFGPPPDF	SPVPA-----	----PPGPGP
Mcdx1	61	WAAPFPAP-K	DDWAAAYGPG	PTASAA----	-----SPA	PLAFGPPPDF	SPVPA-----	----PPGPGP
Hcdx2	65	WPAAYGAPLR	EDWNG-YAPG	GAAAAANA	HGLNGGSPA	AMGYSSPADY	HPHHHPHHHP	HHPAAAPSCA
Mcdx2	65	WPTAYGAPLR	EDWNG-YAPG	G-AAAAANA	HGLNGGSPA	AMGYSSPAEY	HAHHHPHHHP	HHPAASPSCA
Xtcad2	61	TWSSYTPS-R	EDWHP-YGPG	PGASSA----	-----NPA	QISFSPS-DY	NPVQ-----	----PPGP
Zcdx1b	62	WNPAYPPE-R	EEWTP-YGPG	SGVSSS----	-----STG	QLGFSPPE-EF	SSVQ-----	----TPG-
Hcdx1	110	GLLAQPIG--	-----GPG	TPSSPGAQRP	TPYEWMRRSV	AAGGGGGSGK	TRTKDKYRVV	YTDHQLELE
Mcdx1	110	GLLAQSLG--	-----APG	APSSPGAARR	TPYEWMRRSV	AAAGGGGGSGK	TRTKDKYRVV	YTDHQLELE
Hcdx2	134	SGLLQTLNPG	PPGPAATAAA	EQLSPGGQRR	NLCEWMRKP-	AQQLSGSQVK	TRTKDKYRVV	YTDHQLELE
Mcdx2	133	SGLLQTLNLG	PPGPAATAAA	EQLSPSGQRR	NLCEWMRKP-	AQQLSGSQVK	TRTKDKYRVV	YTDHQLELE
Xtcad2	105	GLLPPSLN--	-----SSV	SPLSPSAQRR	NLYEWMRRTG	VPTSTNSNGK	TRTKDKYRVV	YTDHQLELE
Zcdx1b	104	-LLOSSIN--	-----SSV	GQLSPNAQRR	NPYDWMRRS-	VPPAS-SGKK	TRTKDKYRVV	YTDHQLELE
Hcdx1	171	KEFHYSRYIT	IRRKSELAAN	LGLTERQVKI	WFQNRRAKER	KVNKKKQQQQ	Q---PPQPPM	AHDITATPAG
Mcdx1	171	KEFHYSRYIT	IRRKSELAAN	LGLTERQVKI	WFQNRRAKER	KVNKKKQQQQ	QPLPPTQLPL	PLDGTPTPSG
Hcdx2	203	KEFHYSRYIT	IRRKSELAAT	LGLSERQVKI	WFQNRRAKER	KLNKKKLQQQ	QQQQPPQPPP	PPPPPPQPQP
Mcdx2	202	KEFHYSRYIT	IRRKSELAAT	LGLSERQVKI	WFQNRRAKER	KLNKKKQQQQ	QQQQQ-QPPQ	PPQPSQPQP
Xtcad2	166	KEFHYSRYIT	IRRKSELAAS	LALTERQVKI	WFQNRRAKER	KVNKKKMQQQ	SQQASTTPTT	PPSVGTTAGM
Zcdx1b	163	KEFHYSRYIT	IRRKSELAATA	LGLSERQVKI	WFQNRRAKER	KLNKKKMQQ-	PQPASTTPTT	PPGSALPGNV
Hcdx1	238	PSLGGSLCP--	SNTSLIATSS	PMPVKEEFLP	-----	-	-	-
Mcdx1	241	PPLGSLCP--	TNAGLIGTPS	PVPVKEEFLP	-----	-	-	-
Hcdx2	273	GPIRSVPEPL	SPVSSIQASV	SGSVPGVLGP	TGGVLNPTVT	Q	-	-
Mcdx2	271	GALRSVPEPL	SPVTSIQGSV	PGSVPGVLGP	AGGVLNSTVT	Q	-	-
Xtcad2	236	GGLCSSSS--	SNS-NLVSPS	SMPIKEEYLS	-----	-	-	-
Zcdx1b	232	P-MVTSSS--	SGG-LVSPPM	PMSIKEEY--	-----	-	-	-

B

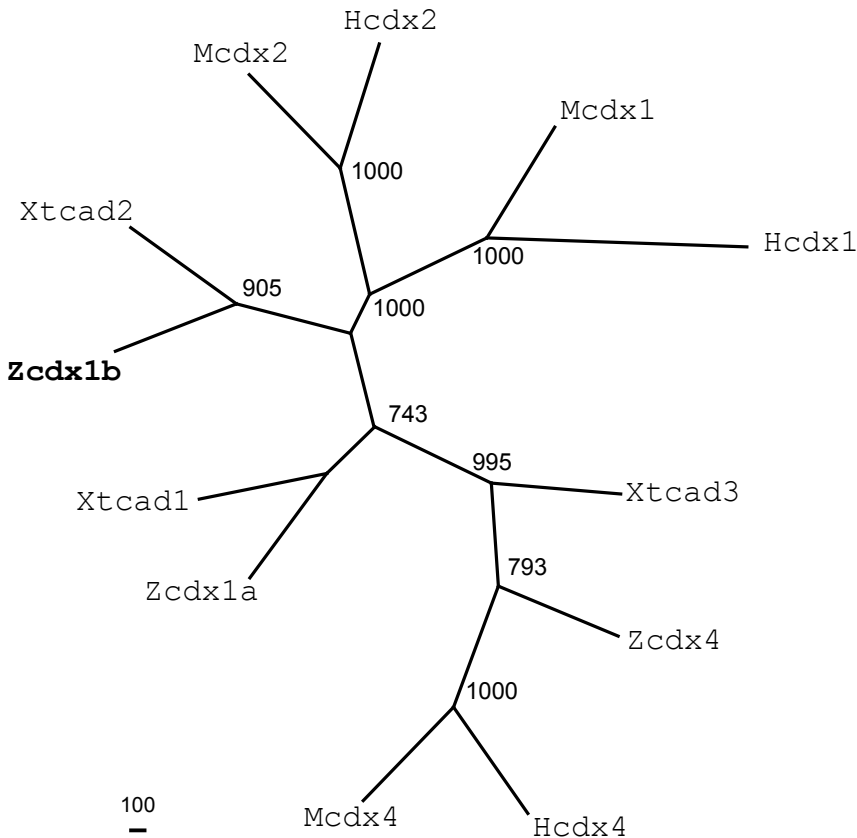


Fig. S2