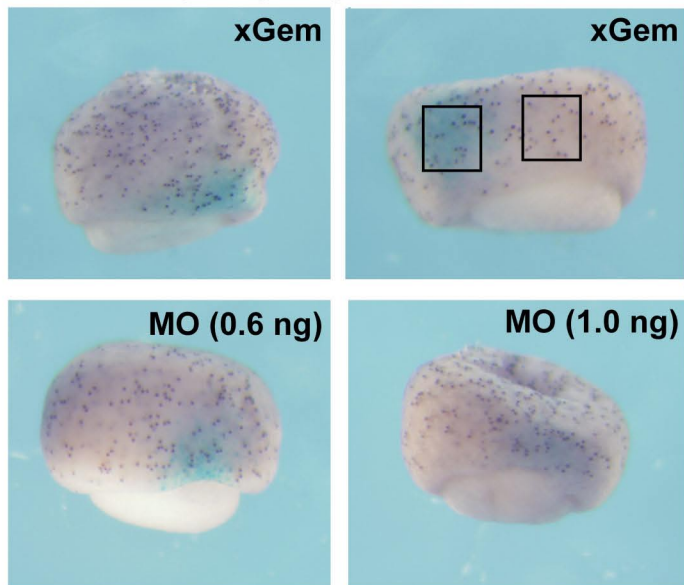
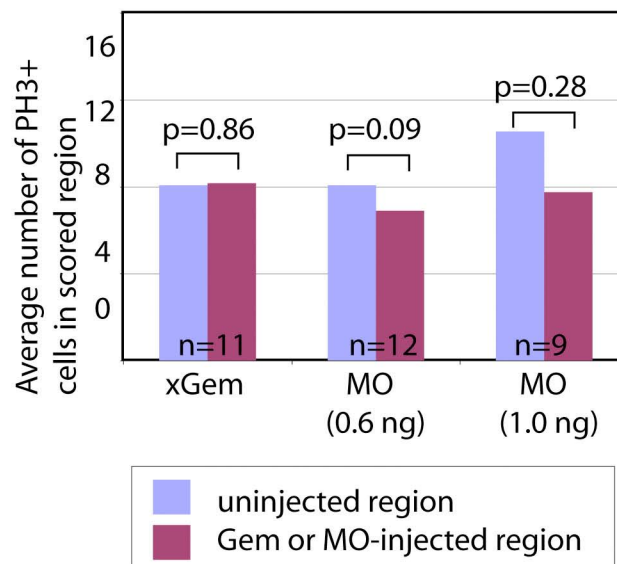


A

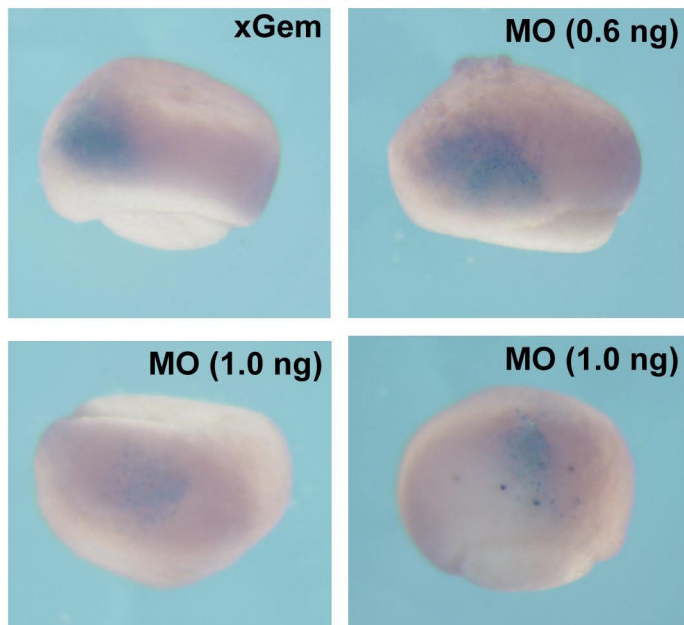
anti-phosphorylated histone H3

**B**

anti-phosphorylated histone H3

**C**

TUNEL

**D**

Sample	total TUNEL + cells	number of embryos scored	Average TUNEL + cells/embryo
xGem	2	14	0.14
xGemMO (0.6 ng)	6	15	0.40
xGemMO (1.0 ng)	9	10	0.90