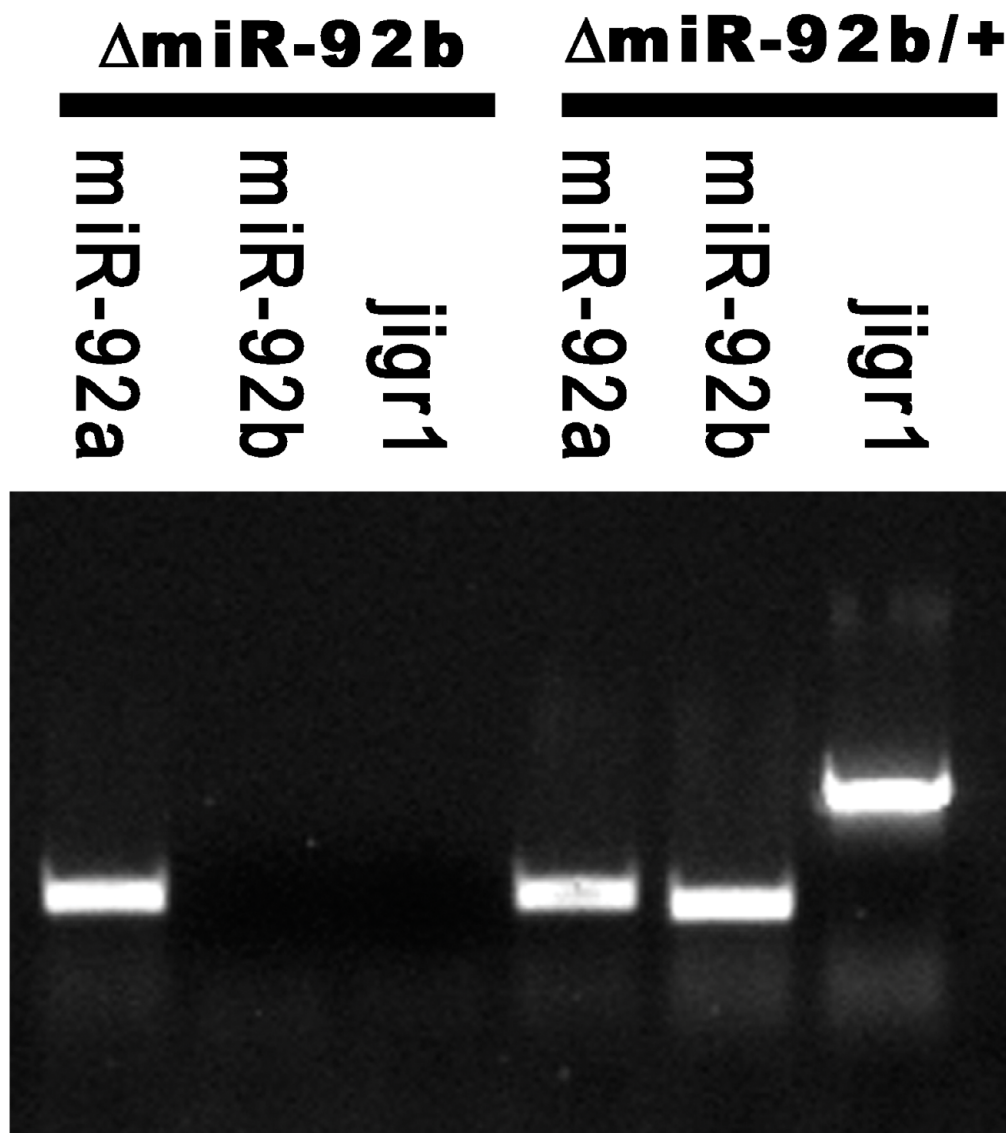


**Fig. S1. Temporal and spatial expression pattern of miR-92b-0.8kb-GFP reporter.** This figure relates to Fig. 4. (A-C') Confocal images of stained miR-92b-0.8kb-GFP embryos with anti-GFP (green) and anti-Mef2 (red) antibodies. (A,A') Lateral view of stage 11 embryo shows no expression of GFP in mesoderm. (B,B') Lateral view of stage 14 embryo shows miR-92b starts to express in the somatic muscle mesoderm but has not expressed in the cardiac mesoderm yet. (C,C') Dorsal view of stage 15 embryo shows when miR-92b begins to express in the cardiac mesoderm.



**Fig. S2. Genomic PCR of  $\Delta$ miR-92b allele.** This figure relates to Fig. 5. Total DNA of stage 16  $\Delta$ miR-92b/ $\Delta$ miR-92b and  $\Delta$ miR-92b/+ embryos were isolated and assayed with PCR using specific primers for indicated genes.