

sdt^{K85}

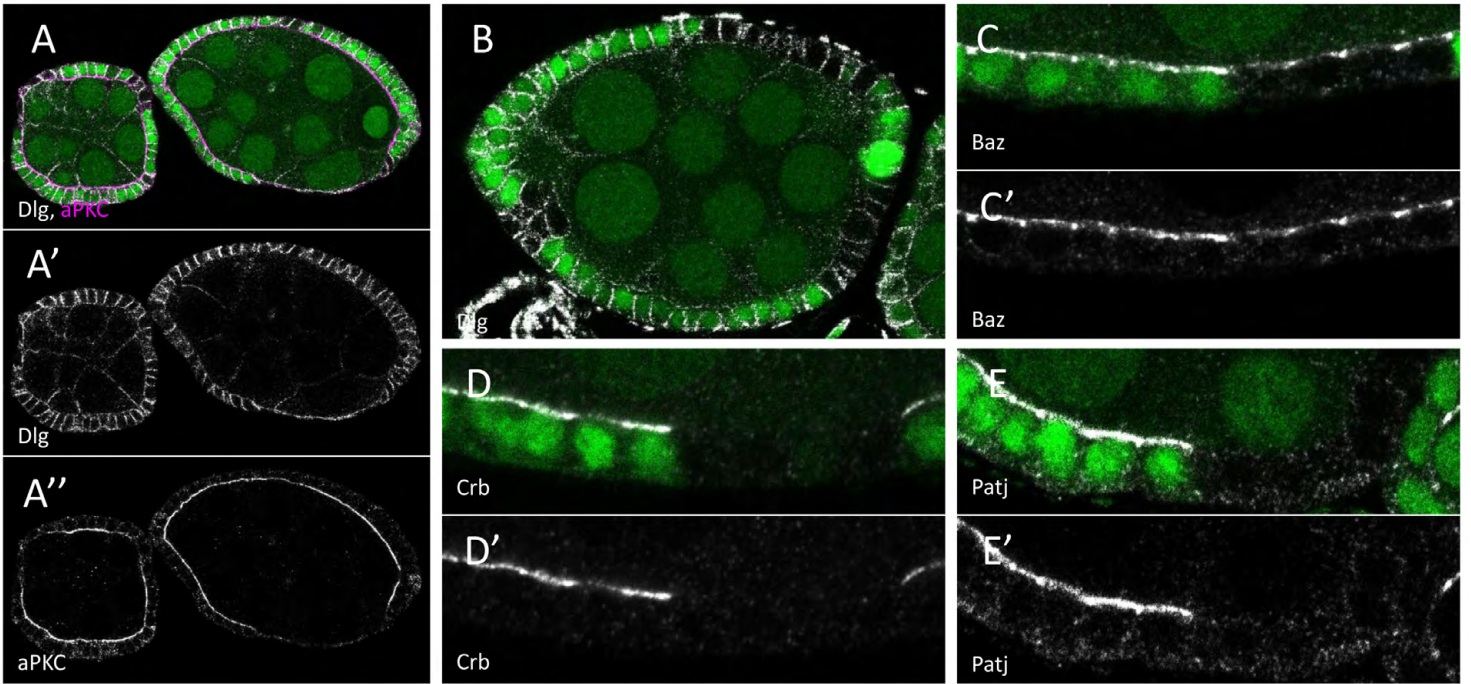


Fig. S1. Defects observed in *sdt* mutants in follicular cells. Follicular cell mutant clones for *sdt*^{K85} marked by the absence of GFP. (A-A'') Clones showing a cell stretching defect and decrease of aPKC from the apical domain. (B) One of the mutant clones shows a multilayer and Dlg spreading all around the cells. (C,C') Decrease in Baz from the apical domain in *sdt* mutant cells. (D,D') Complete loss of Crb from the apical domain in *sdt* mutant cells. (E,E') Complete loss of Patj from the apical domain in *sdt* mutant cells.

crb^{8F105}

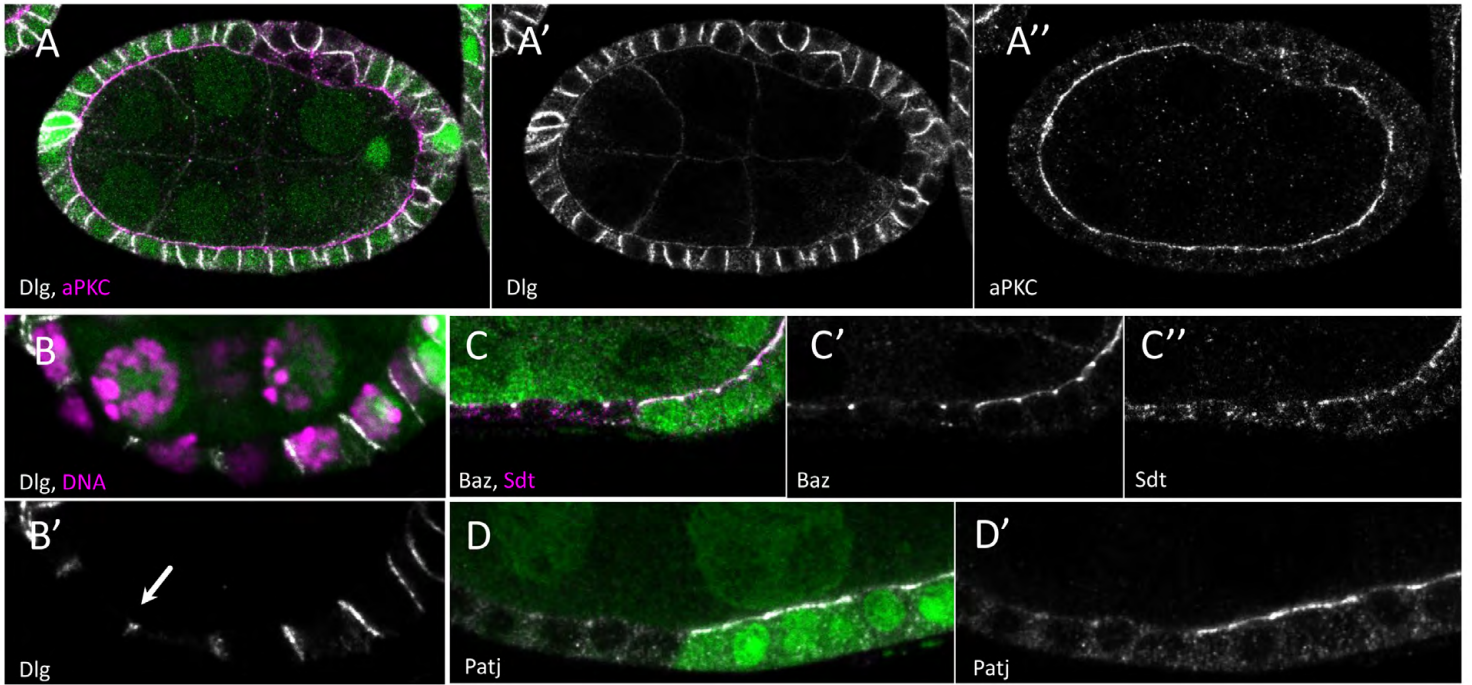


Fig. S2. Defects observed in *crb* mutants in follicular cells. Follicular cell mutant clones for *crb*^{8F105} marked by the absence of GFP. (A-A'') Mutant clone showing multilayers of cells, mislocalisation of aPKC and spreading of Dlg. (B,B') Mutant clones with flat cells that can be seen by the reduced size of the lateral domain stained for Dlg (arrow on B'). (C-C'') Loss of apical Baz (white on C, and C') and Sdt (pink on C, and white on C'') in *crb* mutant cells. (D,D') Complete loss of Patj from the apical domain in *crb* mutant cells.