

Fig. S1. Midline markers *lft1*, *ntl* and *shh* are intact and appear the same as wild-type in *sdc2* morphants. (A-F) *lft1* (A,B), *ntl* (C,D) and *shh* (E,F) in wild type (A,C,E) and *sdc2* morphant (B,D,F).

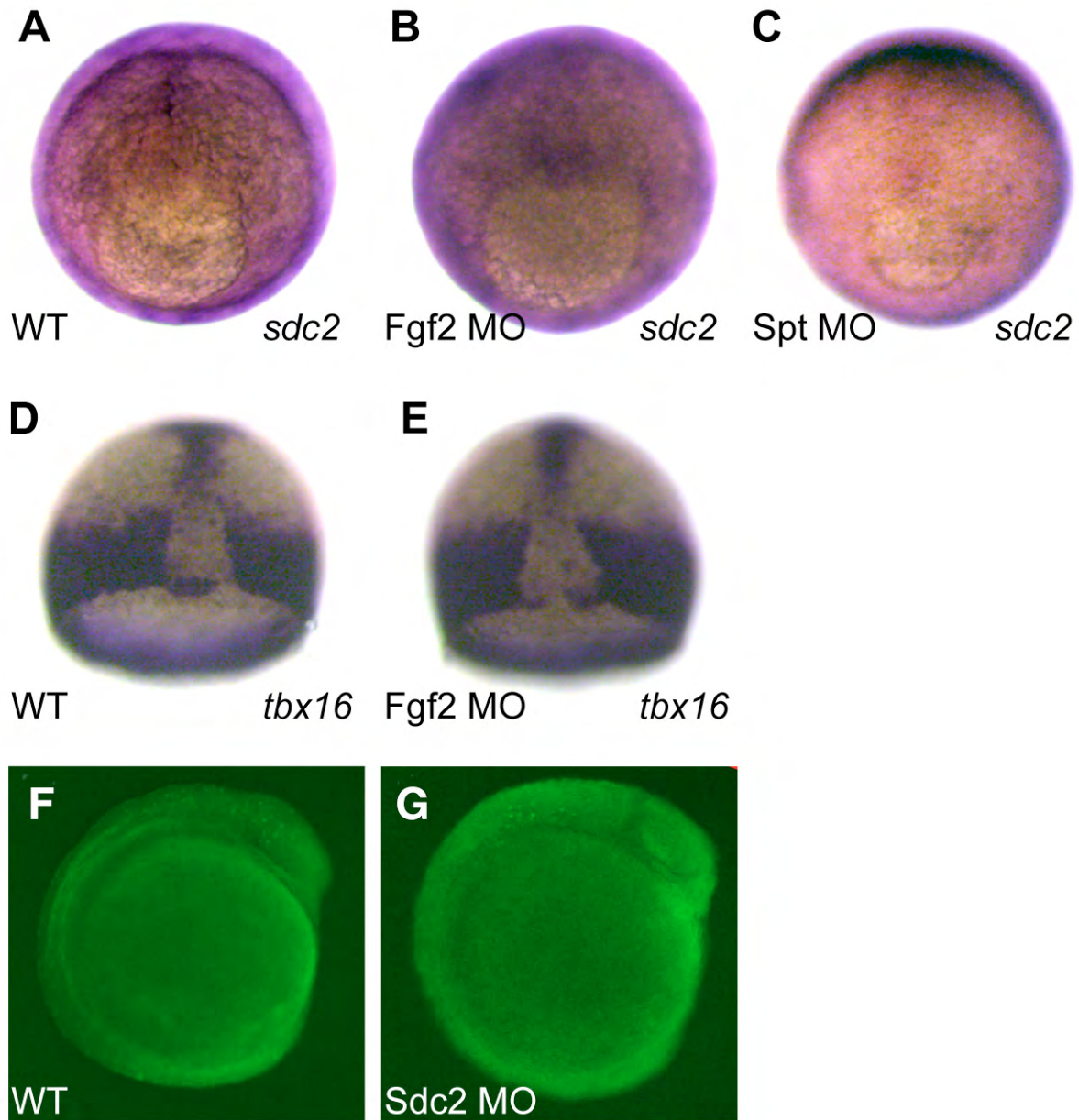


Fig. S2. Sdc2 function explored through in situ hybridization and acridine orange staining experiments. (A-C) *sdc2* is globally expressed in *fgf2* and *tbx16* morphant embryos. (D,E) *tbx16* is strongly expressed in *fgf2* morphants including within DFCs that display disrupted morphogenesis. These data demonstrate that Fgf2 is not required for *sdc2* or *tbx16* expression. (F,G) Acridine Orange staining was similar in wild type and *sdc2* morphants.