

Fig. S1. Control of postembryonic Cre induction. (A-C) Epifluorescent acquisitions and brightfield images. (A) Pigment cell clones in adult fish induced at 4 dpf and (B) 20 dpf (arrowhead). (C) Trunk of uninduced adult fish devoid of clones. (D) MIP of confocal stacks showing labeled melanophores and iridophores on the adult fish flank.

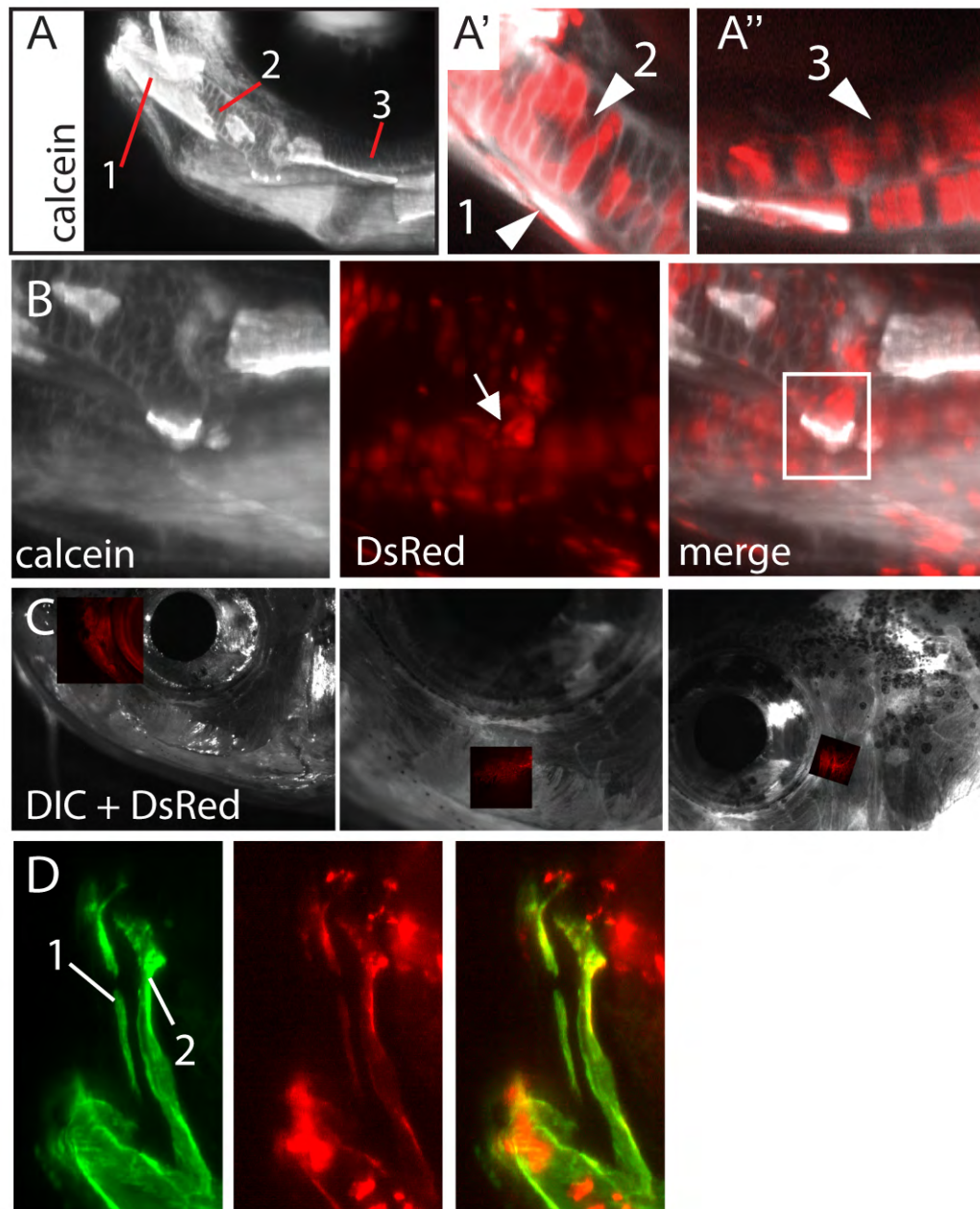


Fig. S2. Examples of NC-derived structures detectable *in vivo* in metamorphic and adult fish. (A-D) Induced *Tg(sox10:ER^{T2}-Cre;β-actin:switch)* metamorphic and adult fish stained with calcein. (A-A'') 20-dpf fish with labeled dentary (A', 1), Meckel's cartilage (A', 2) and palatoquadrate (A'', 3). (B) 20-dpf fish with labeled retroarticular bone (arrow). (C) Labeled circumorbital bones. (D) Labeled pre-maxilla (1) and maxilla (2).

bactin:switch;crestin:gal4-UAS:GFP+UAS:CRE

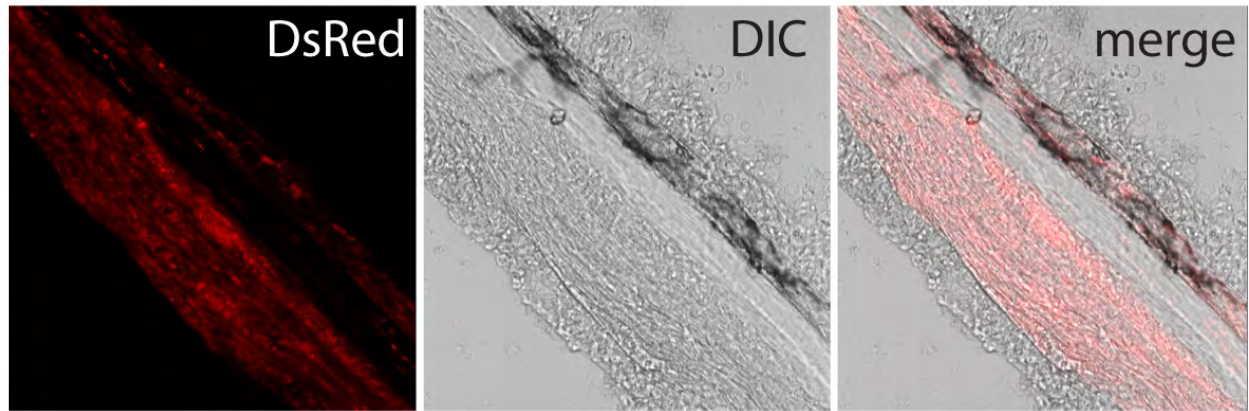


Fig. S3. Recombined tissues in barbels of adult *Tg(crestin:gal4-UAS:GFP; β -actin:switch)* fish injected at the 1-cell stage with *UAS:Cre* DNA.