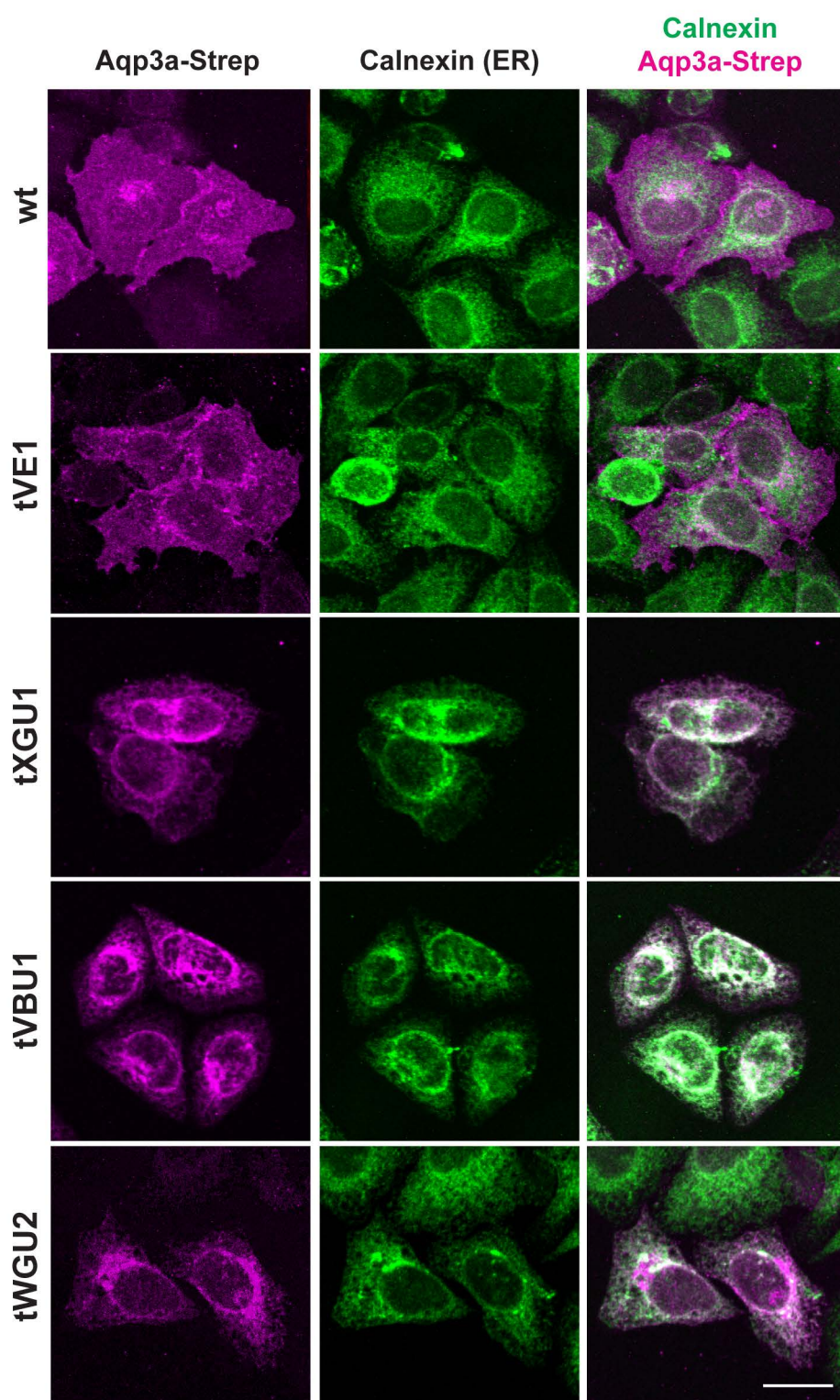
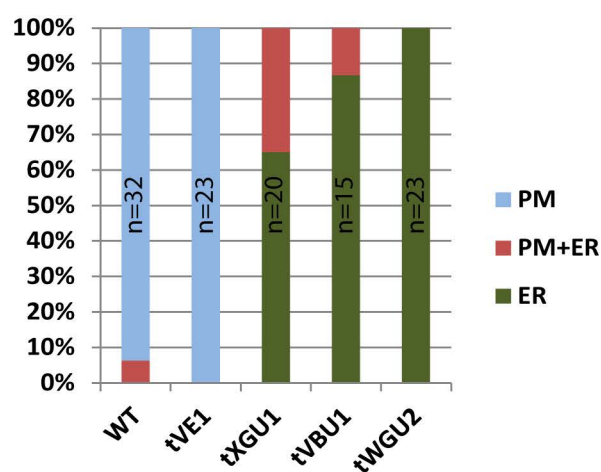


A



B



Suppl. Fig. 1. DrAqp3a localization in HeLa cells.

(A) *Aq3a-Strep* (magenta) was expressed in HeLa cells and co-stained with the endoplasmic reticulum marker, calnexin (green). WT and Aqp3aR220Q (tVE1) proteins reach the plasma membrane. Aqp3aV201G (tXGU1), Aqp3aR225L (tVBU1) and Aqp3aR225H (tWGU2) mutant proteins co-localize with calnexin. Bar = 25 μ m.

(B) Quantification of endoplasmic reticulum retention of WT and mutant Aqp3a. PM – Aqp3a is observed in the plasma membrane, ER – Aqp3a is retained in the endoplasmic reticulum, PM+ER – Aqp3a is seen both in the endoplasmic reticulum and in the plasma membrane; n = total number of transfected cells.