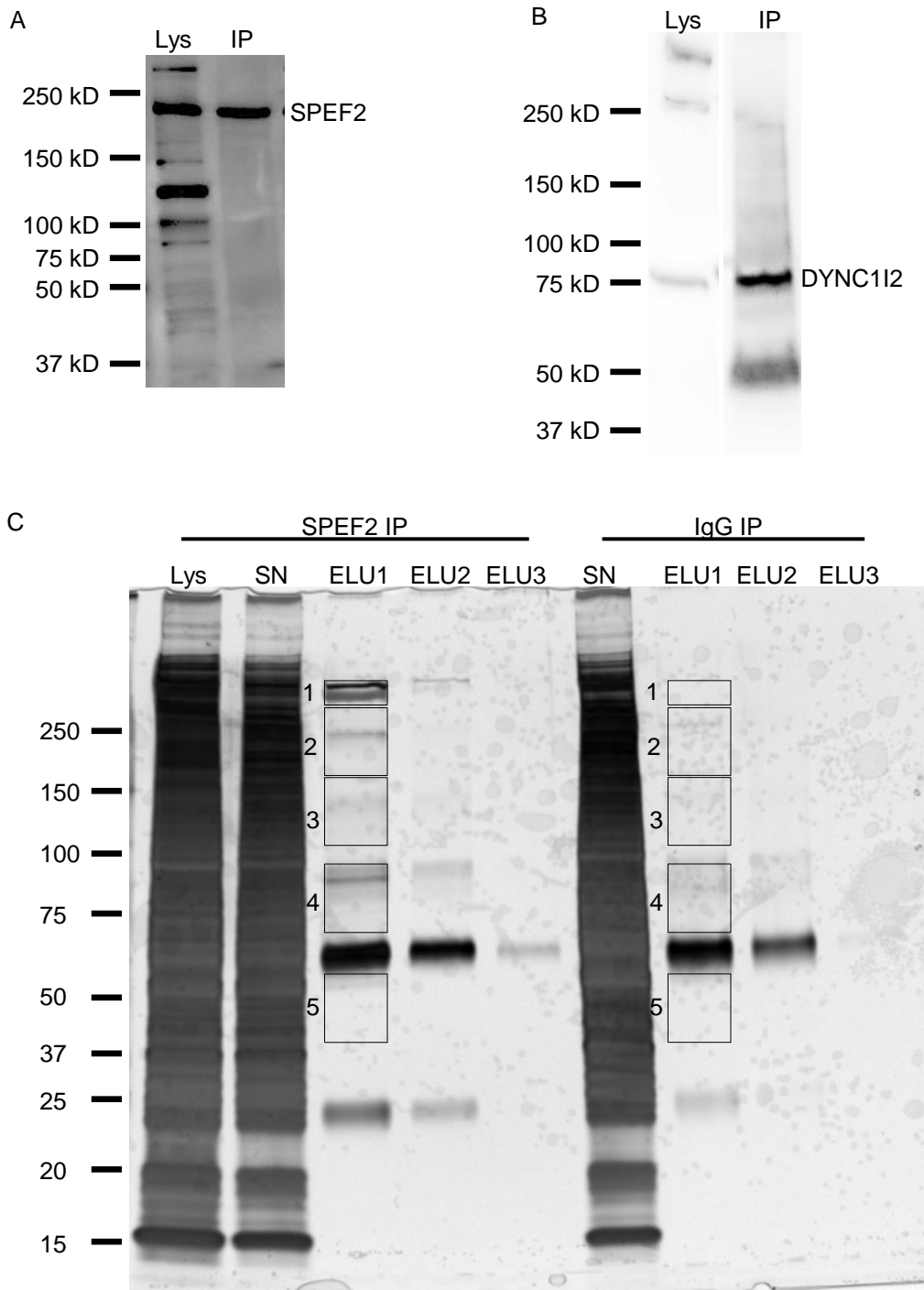


## Supplementary Figure S1



**Supplementary Figure S1.** A. SPEF2 specific KPL2end antibody recognizes and precipitates (IP) ~200 kD size SPEF2 band from the B6 mouse testis lysate (Lys). B. DYNC112 antibody precipitates (IP) ~75 kD size DYNC112 specific band from the B6 mice testis lysate (Lys). C. SPEF2 IP fraction was analyzed from the SDS-page gel using silver staining. Five regions from the gel were isolated and proceed with in-gel digestion and mass spectrometry analysis.