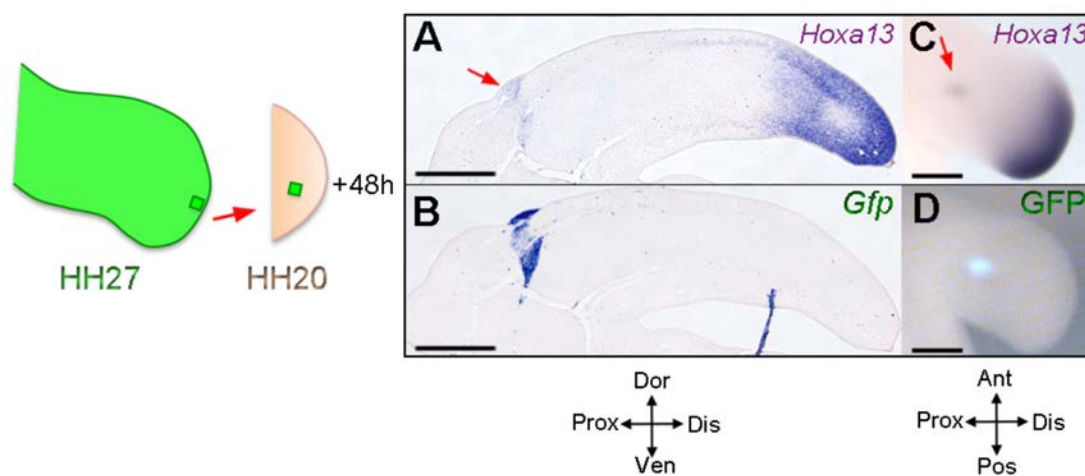


SUPPLEMENTARY INFORMATION FOR MANUSCRIPT

Intrinsic properties of limb bud cells can be differentially reset

Patricia Saiz-Lopez¹, Kavitha Chinnaiya², Matthew Towers^{2†} & Maria A. Ros^{1,3†}**Figure Supplementary 1*****Hoxa13* expression is maintained in absence of AER signalling.**

GFP-expressing HH27 distal cells (150 μ m blocks) grafted to a proximal level in HH20 wings maintain the expression of *Hoxa13* for at least 48 h. (A-B) The position of the graft is assessed by in situ hybridization for *Gfp* in consecutive sections (B), 7 μ m apart, from those assayed for *Hoxa13* expression (A). (C-D) Whole mount in situ hybridization showing the maintenance of *Hoxa13* expression in the graft (C) that is detected by the fluorescence of GFP under UVA light (D). The schematic of the experimental procedure is shown on the left. At least three examples for each experimental condition were analyzed. Scale bars: A and B, 400 μ m; C and D, 300 μ m. Dor (Dorsal), Ven (Ventral), Ant (Anterior), Pos (Posterior), Prox (Proximal), Dis (Distal).