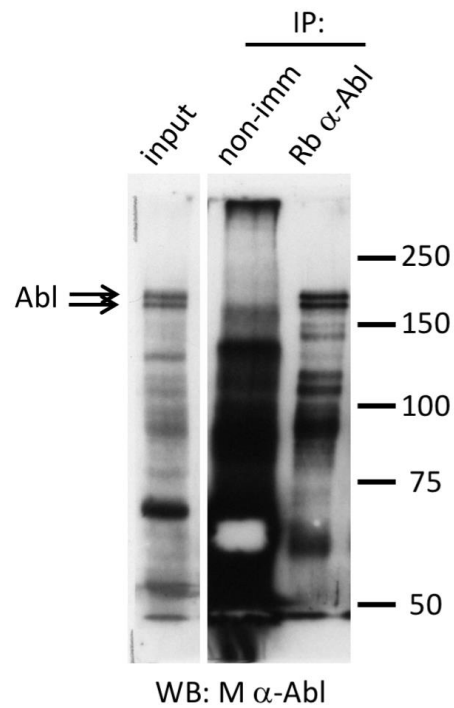


Kannan, Suppl. Fig 1



Supplementary Fig 1. Anti-Abl antibody immunoprecipitates Abl protein

Aliquots of the embryo lysate used for the experiment of Fig 2C were subjected to IP, PAGE and Western blotting. Molecular weight markers are indicated; non-imm indicates control non-immune IgG.

Suppl. Table 1: Quantitative data for Figure 5D, Structure/function dissection of Trio

Background	Genotype	STI-571	mean	SEM	N
Rac biosensor			1.61	.10	24
Rac biosensor		+STI-571	1.08	.08	24
Rac biosensor	<i>UAS-Trio mGEF2</i>		2.85	.20	29
Rac biosensor	<i>UAS-Trio mGEF2</i>	+STI-571	1.46	.11	29
Rac biosensor	<i>UAS-Trio mGEF2 Δ(NTD)</i>		2.39	.19	31
Rac biosensor	<i>UAS-Trio mGEF2 Δ(NTD)</i>	+STI-571	2.34	.23	31
Rac biosensor	<i>UAS-Trio mGEF2 Δ(spectrin repeats)</i>		1.58	.10	35
Rac biosensor	<i>UAS-Trio mGEF2 Δ(spectrin repeats)</i>	+STI-571	.68	.08	35
Rac biosensor	<i>UAS-Trio mGEF2 Δ(NTD+spectrin)</i>		2.44	.17	37
Rac biosensor	<i>UAS-Trio mGEF2 Δ(NTD+spectrin)</i>	+STI-571	1.80	.12	37
Rac biosensor	<i>UAS-Trio mGEF2 Δ(SH3)</i>		1.70	.07	38
Rac biosensor	<i>UAS-Trio mGEF2 Δ(SH3)</i>	+STI-571	.53	.06	38