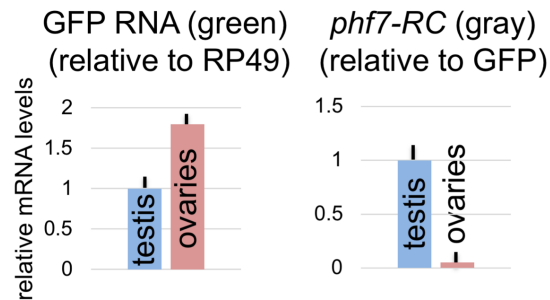


Fig. S1 The *phf7*^{ΔORF}::GFP allele is sex-specifically regulated. (A) Schematic of the *phf7*^{ΔORF}::GFP allele in which the open reading frame was replaced by GFP (green box). Primers for RT-qPCR are indicated by arrowheads: Gray for *phf7*-RC, and Green for GFP. (B) RT-qPCR measurements of *phf7*-RC transcript in *phf7*^{ΔORF}::GFP ovaries and testis. Error Bars indicate standard deviation of three biological replicates. (C) Confocal images of testis from hemizygous *phf7*^{ΔORF}::GFP males and ovaries from homozygous *phf7*^{ΔORF}::GFP females stained for GFP protein (green) and DNA (red). Scale bar, 50 μm.

A *phf7*^{ΔORF}::GFP



B



C

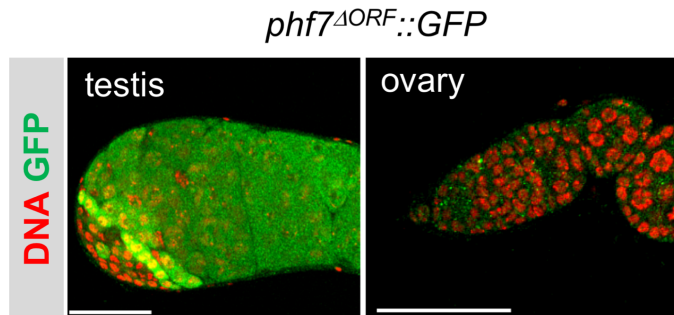


Fig. S2. Ectopic PHF7 stimulates testis-like expression from the knock-in $phf7^{\Delta ORF}::GFP$ allele Ectopic PHF7 can induce testis-like expression from the knock-in $phf7^{\Delta ORF}::GFP$ allele. Confocal images of ovarioles from $phf7^{\Delta ORF}::GFP; nos>phf7$ and control $phf7^{\Delta ORF}::GFP; nos>phf7^{\Delta PHD}$ females stained for GFP protein (green) and DNA (red). Scale bar, 50 μm .

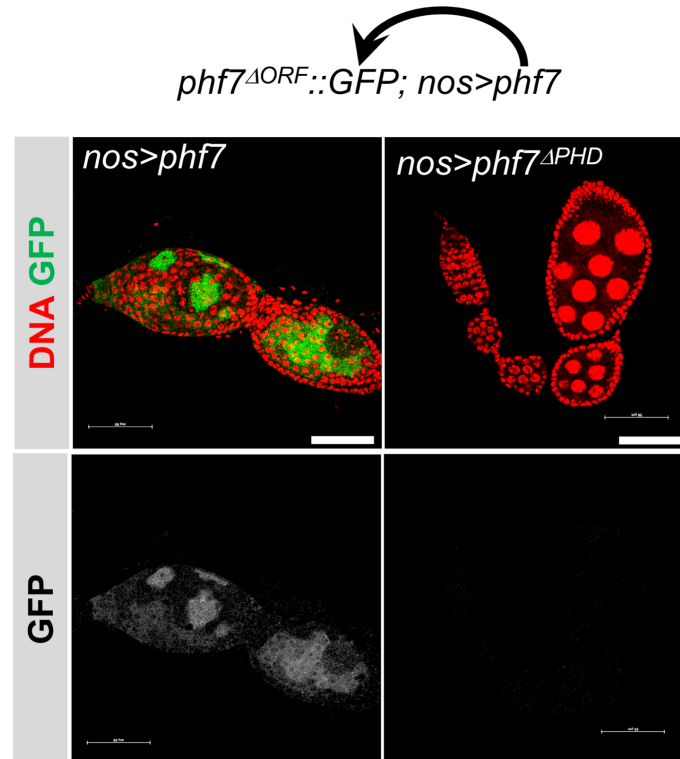


Table S1

[Click here to Download Table S1](#)

Table S2

[Click here to Download Table S2](#)

Table S3

[Click here to Download Table S3](#)

Table S4

[Click here to Download Table S4](#)