

Figure S1: Pointed and Midline spatiotemporally overlap in the posterior follicular epithelium. (A-A'') Egg chambers in early oogenesis stages 6-7 (S6-7). Chimeric PNT-GFP is detected by anti-GFP (A) starting at S6 (yellow arrow) concurrently with observable MID expression (A') (n=8). Yellow dash line denotes posterior pattern of early PNT. (B-B'') PNT-GFP pattern at stage 10B egg chambers. Expression of PNT-GFP is observed overlapping with posterior MID pattern (B'') with gain of observable expression in dorsal midline (B) (n=6). Dotted yellow line marks the domain of late PNT in the dorsal midline. White dash line denotes anterior boundary, yellow arrowhead marks dorsal midline. Reference bar in all panels represents 50µm. In all images anterior is to the left.

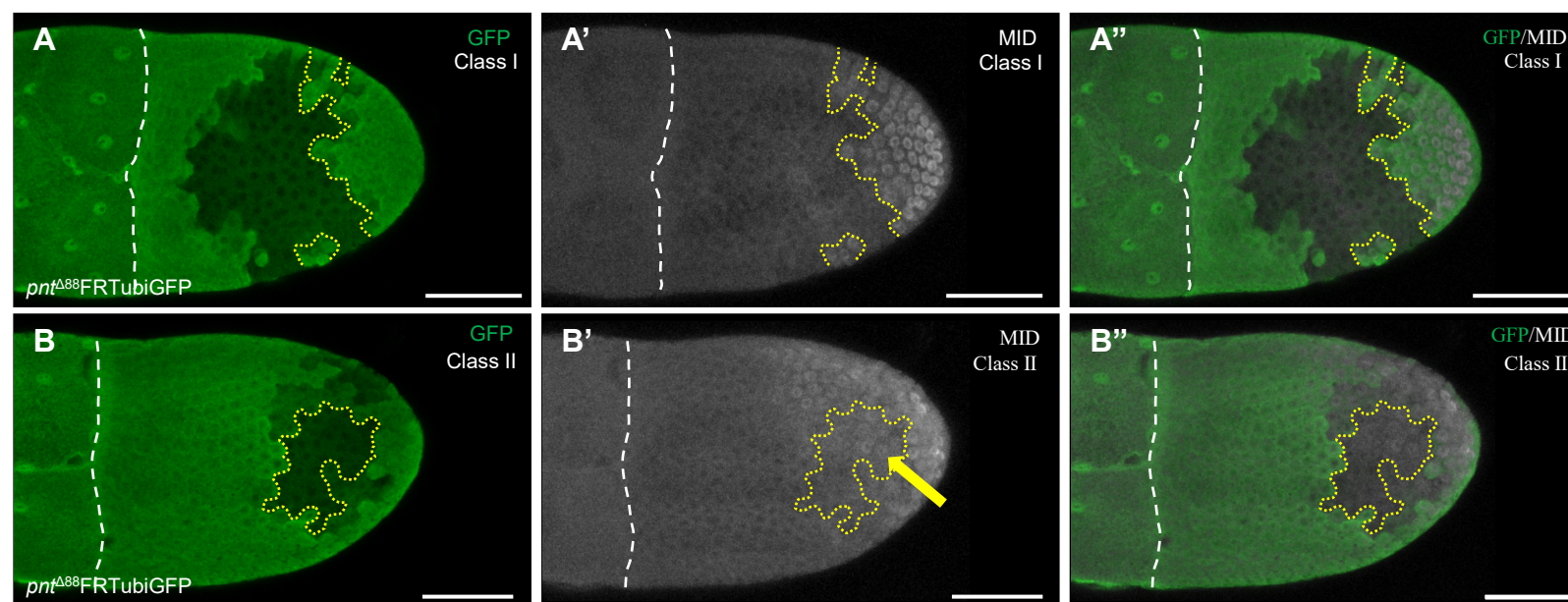


Figure S2: *pointed* is necessary for wildtype expression pattern of MID. (A, B) Null clones of *pnt* (*pnt*^{Δ88}) negatively marked with the loss of GFP. Yellow dotted line marks clonal boundary. (A-A'') Class I- null clones of *pnt* (*pnt*^{Δ88}) exhibiting complete loss of MID (A') (n=46). (B-B'') Class II-null clones of *pnt* (*pnt*^{Δ88}) exhibiting reduced MID expression (B' yellow arrow) (n=38). White dash line (A-B'') marks the anterior boundary of the oocyte. Reference bar in all panels represents 50μm. In all images anterior is to the left.

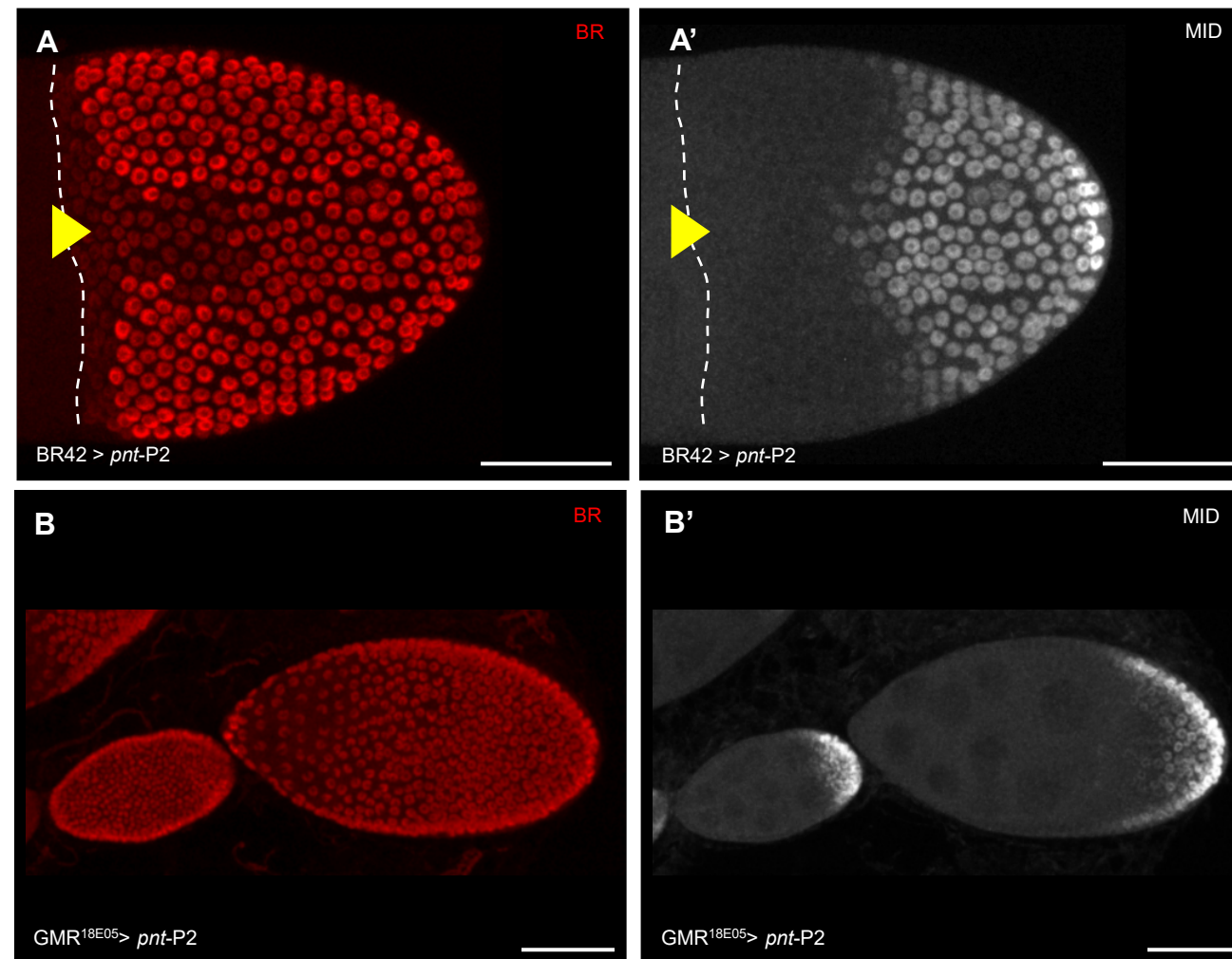


Figure S3: *pointed*-P2 isoform does not impact follicle cells patterning. (A, A') Ectopic expression of *pnt*-P2 at stage 10B of oogenesis in the dorsal anterior (BR42-GAL4). White dash line marks the anterior boundary between the oocyte and nurse cells. Yellow arrowhead marks the dorsal midline (n=6). (B, B') Early stage egg chambers ectopically expressing of *pnt*-P2 via early anterior driver (GMR^{18E05}-GAL4) (n=8). Reference bar in all panels represents 50µm. In all images anterior is to the left.

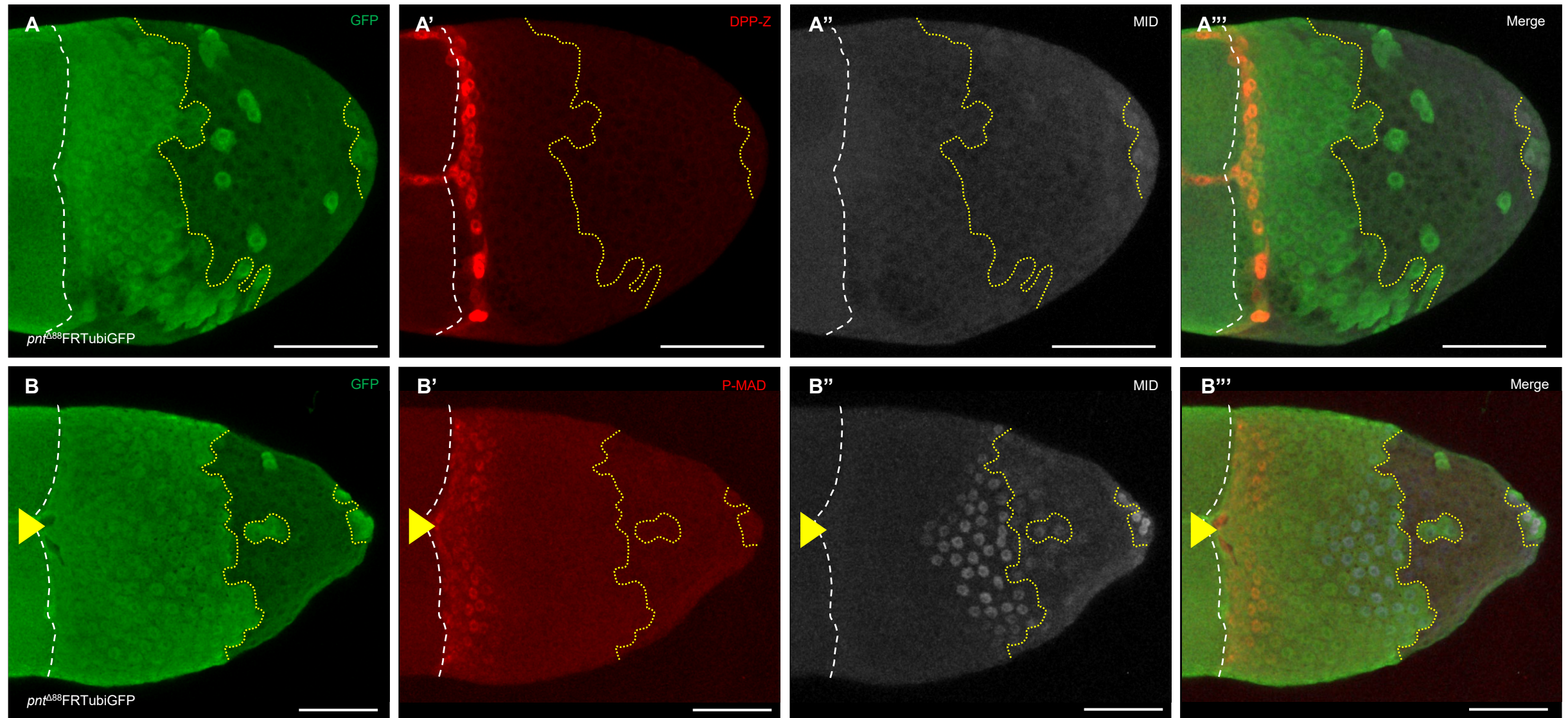


Figure S4: PNT is not necessary to suppress *dpp* in the posterior end. (A-A''') Null clones of *pnt* (*pnt*^{Δ88}) negatively marked with the loss of GFP (A). Clonal boundary is denoted by yellow dotted line. (A') LacZ reporter for DPP (DPP-Z, red). (A'') MID expression (white) (n=6). (B-B''') Null clones of *pnt* (*pnt*^{Δ88}) negatively marked with the loss of GFP (B). Clonal boundary is denoted by yellow dotted line. (B') P-MAD pattern (Red). (B'') MID expression (white) (n=6). (A''' and B''') Merged images of A-A'' and B-B'', respectively. Yellow arrowhead marks dorsal midline. In all images the dashed white line denotes the anterior boundary. Reference bar in all panels represents 50μm. In all images anterior is to the left.