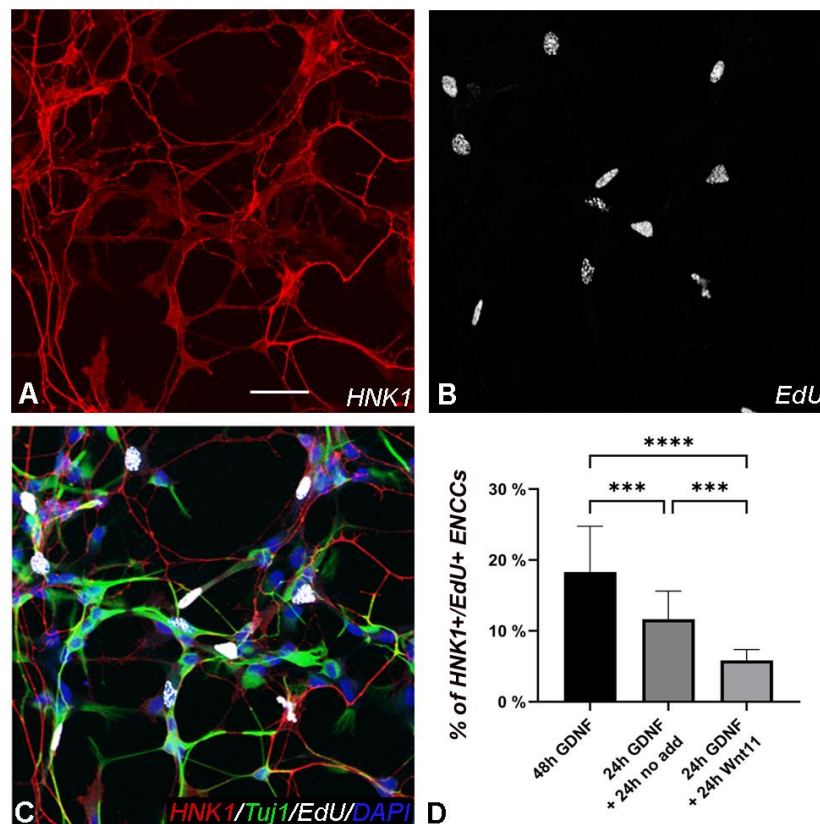


**Fig. S1. Schematic diagram of experiment plan in Figure 8.** Schematic diagram shows the experimental design used for the experiment shown in Figure 8, where E6 chick ceca were cultured on fibronectin-coated plates in the presence of GDNF and/or Wnt11.



**Fig. S2. Wnt11 inhibits ENCC proliferation.** E6 ceca and midgut were cultured on fibronectin-coated plates in the presence of GDNF to promote ENCC migration away from the guts. Addition of EdU to the cultures allowed quantitative comparison of the rate of ENCC proliferation in the three different culture conditions tested. \*\*\* $p < 0.001$ ; \*\*\*\* $p < 0.0001$

**Table S1. Analysis of differentially expressed genes between ceca and interceca.**

[Click here to download Table S1](#)

**Table S2. Over-representation analysis of biological processes (Gene Ontology) performed on differentially expressed genes.**

[Click here to download Table S2](#)

**Table S3. Protein-protein interaction module analysis on differentially expressed genes.**

[Click here to download Table S3](#)