

Watts and Ralston, Fig. S1 for Fig 1.

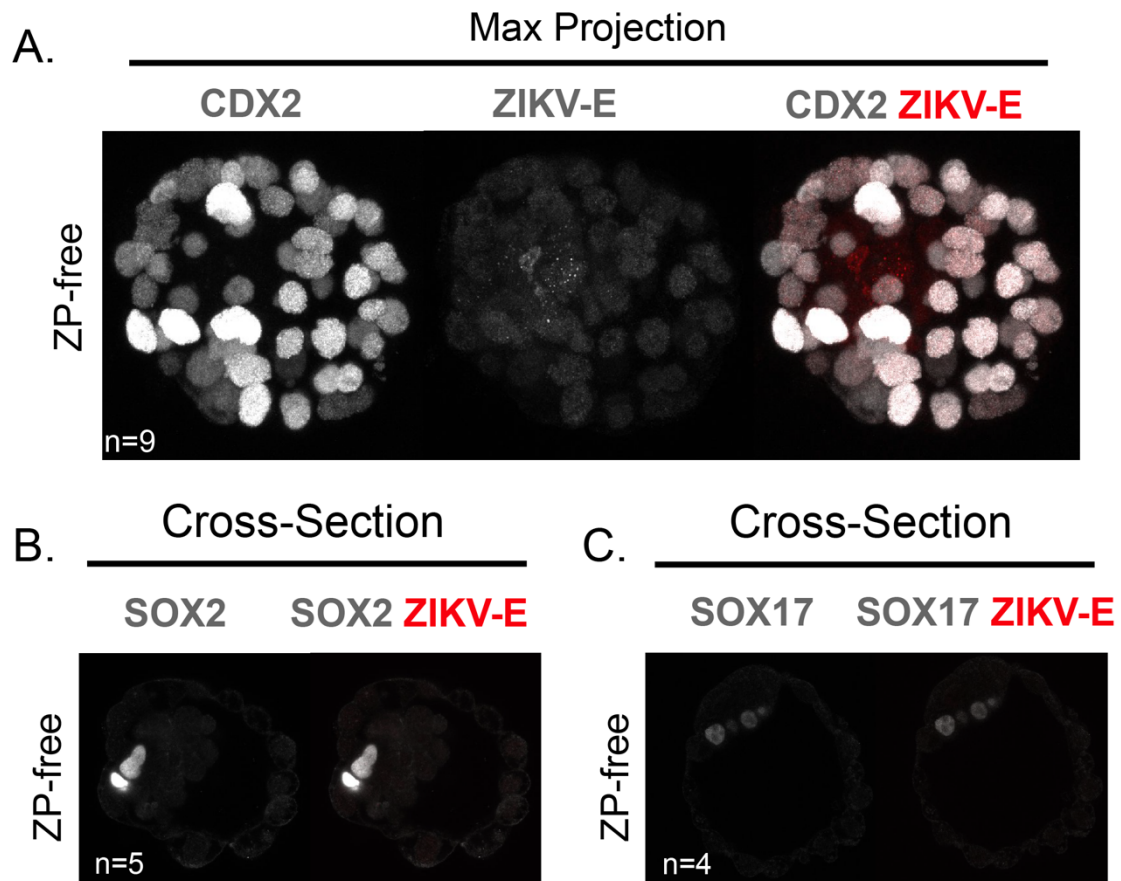


Fig. S1. Negative control for ZIKV-E immunofluorescence experiments.

A) Embryos were not exposed to ZIKV, and were then immunofluorescently stained with antibodies to detect CDX2 and anti-ZIKV-E, demonstrating ZIKV-dependent ZIKV-E signal detected in Fig. 1.

B) Similar to panel A, uninfected embryos were immunofluorescently stained with antibodies to detect SOX2 and anti-ZIKV-E.

C) Uninfected embryos were immunofluorescently stained with antibodies to detect SOX17 and anti-ZIKV-E.

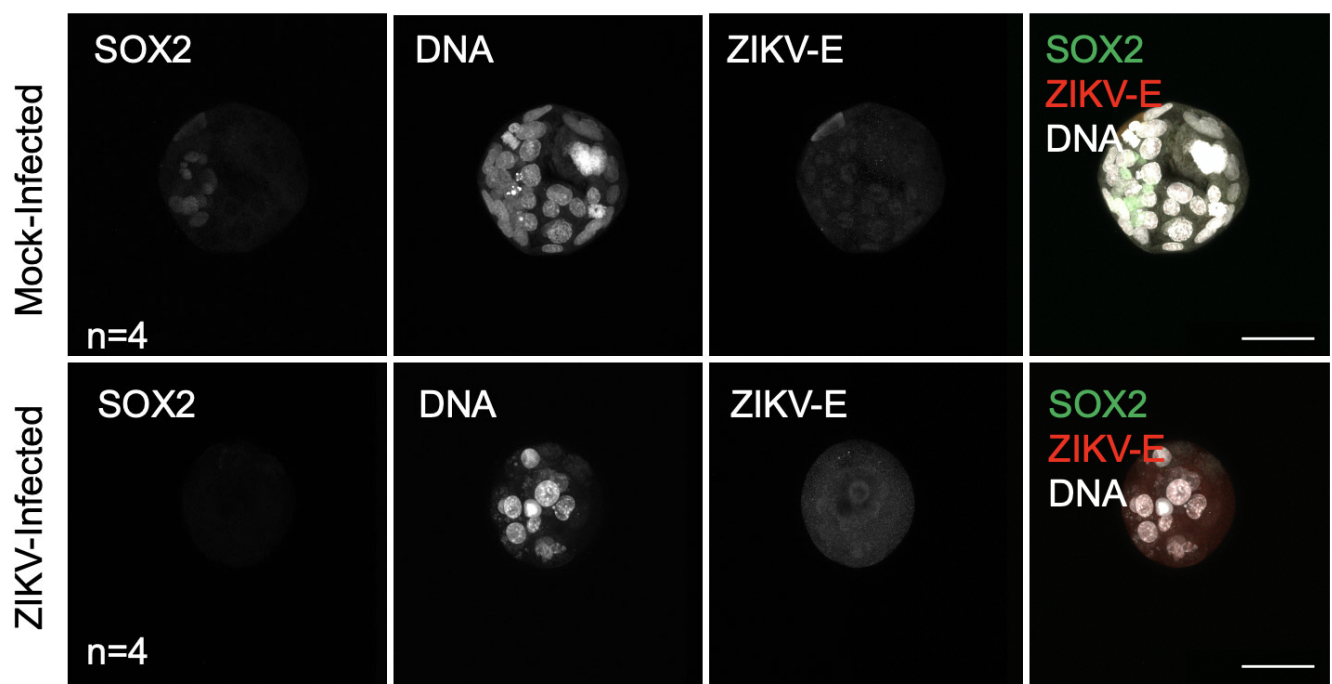


Fig. S2. ZIKV-E is not detected within ZIKV-exposed embryos when infection begins at the two-cell stage. Control embryos are shown in the upper panels and ZIKV-exposed embryos, which have failed to develop, are shown in the lower panels. Sample size is indicated and scale bar: 50 μ m.