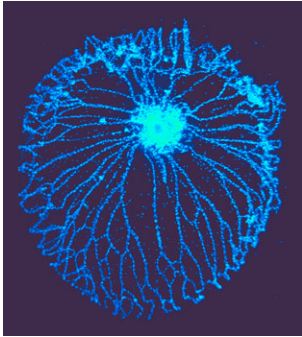


# Development



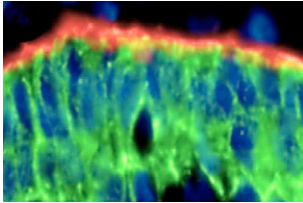
**Cover:** Fluorescence labeling (blue) of cell nuclei of the hyaloid vessel network from a 5-day-old mouse. The hyaloid vessels form a cup running parallel to the lens and retina during embryonic development. Postnatal regression of the hyaloid vessels, an adaptation to clear obstructions from the optic axis, requires the coordinated activity of the Wnt and angiopoietin pathways. See research article by Rao et al. on p. 4449.

## BOOK REVIEWS

- 4307** The wide world of Wnts  
Dorsky, R. I.
- 4308** Through the eye of a book... on the eye  
Mason, C.
- 4310** What can embryos teach us about communication?  
Amaya, E.
- 4311** On the backroads to cellular asymmetry  
Knoblich, J.
- 4313** An 'all in' account of Smad biology and TGF $\beta$  signalling  
Huylebroeck, D.

## RESEARCH ARTICLES

- 4315** Cessation of gastrulation is mediated by suppression of epithelial-mesenchymal transition at the ventral ectodermal ridge  
Ohta, S., Suzuki, K., Tachibana, K., Tanaka, H. and Yamada, G.
- 4325** Cytoplasmic domain requirements for Frazzled-mediated attractive axon turning at the *Drosophila* midline  
Garbe, D. S., O'Donnell, M. and Bashaw, G. J.
- 4335** Blimp1 regulates development of the posterior forelimb, caudal pharyngeal arches, heart and sensory vibrissae in mice  
Robertson, E. J., Charatsi, I., Joyner, C. J., Koonce, C. H., Morgan, M., Islam, A., Paterson, C., Lejsek, E., Arnold, S. J., Kallies, A., Nutt, S. L. and Bikoff, E. K.
- 4347** *collier* transcription in a single *Drosophila* muscle lineage: the combinatorial control of muscle identity  
Dubois, L., Enriquez, J., Daburon, V., Crozet, F., Lebreton, G., Crozatier, M. and Vincent, A.
- 4357** SCAR/WAVE and Arp2/3 are crucial for cytoskeletal remodeling at the site of myoblast fusion  
Richardson, B. E., Beckett, K., Nowak, S. J. and Baylies, M. K.
- 4369** Trk signaling regulates neural precursor cell proliferation and differentiation during cortical development  
Bartkowska, K., Paquin, A., Gauthier, A. S., Kaplan, D. R. and Miller, F. D.
- 4381** Ttrap is an essential modulator of Smad3-dependent Nodal signaling during zebrafish gastrulation and left-right axis determination  
Esguerra, C. V., Nelles, L., Vermeire, L., Ibrahim, A., Crawford, A. D., Derua, R., Janssens, E., Waelkens, E., Carmeliet, P., Collen, D. and Huylebroeck, D.
- 4395** A neuropeptide hormone cascade controls the precise onset of post-eclosion cuticular tanning in *Drosophila melanogaster*  
Davis, M. M., O'Keefe, S. L., Primrose, D. A. and Hodgetts, R. B.
- 4405** Cross-regulation of *Ngn1* and *Math1* coordinates the production of neurons and sensory hair cells during inner ear development  
Raft, S., Koundakjian, E. J., Quinones, H., Jayasena, C. S., Goodrich, L. V., Johnson, J. E., Segil, N. and Groves, A. K.
- 4417** Specification of hypothalamic neurons by dual regulation of the homeodomain protein Orthopedia  
Blechman, J., Borodovsky, N., Eisenberg, M., Nabel-Rosen, H., Grimm, J. and Levkowitz, G.



E-cadherin (green) and laminin (red) immunostaining in GFP and human *BMP2* overexpressing chick embryos. This study reports that Bmp signalling inhibition by noggin provides a stop signal to ingressing cells of the ventral ectodermal ridge, a derivative of the primitive streak, at the end of gastrulation. See research article on p. 4315.

- 4427** Lymph heart in chick – somitic origin, development and embryonic oedema  
Valasek, P., Macharia, R., Neuhuber, W. L., Wilting, J., Becker, D. L. and Patel, K.
- 4437** Spermatocyte cytokinesis requires rapid membrane addition mediated by ARF6 on central spindle recycling endosomes  
Dyer, N., Rebollo, E., Domínguez, P., Elkhatib, N., Chavrier, P., Daviet, L., González, C. and González-Gaitán, M.
- 4449** Obligatory participation of macrophages in an angiopoietin 2-mediated cell death switch  
Rao, S., Lobov, I. B., Vallance, J. E., Tsujikawa, K., Shiojima, I., Akunuru, S., Walsh, K., Benjamin, L. E. and Lang, R. A.
- 4459** Notch-GATA synergy promotes endoderm-specific expression of *ref-1* in *C. elegans*  
Neves, A., English, K. and Priess, J. R.
- 4469** The transmembrane protein Perdido interacts with Grip and integrins to mediate myotube projection and attachment in the *Drosophila* embryo  
Estrada, B., Gisselbrecht, S. S. and Michelson, A. M.
- 4479** Neuronal calcium sensor-1 modulation of optimal calcium level for neurite outgrowth  
Hui, K., Fei, G.-H., Saab, B. J., Su, J., Roder, J. C. and Feng, Z.-P.
- 4491** Semaphorin and neuropilin co-expression in motoneurons sets axon sensitivity to environmental semaphorin sources during motor axon pathfinding  
Moret, F., Renaudot, C., Bozon, M. and Castellani, V.
- 4503** Corrigendum
- 4506** Corrigendum
- 4507** Erratum