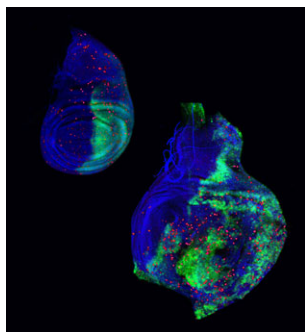
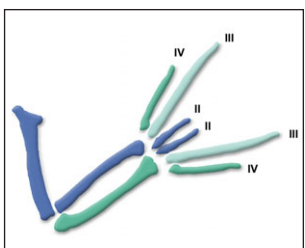


# Development



**Cover:** *Crol* drives overgrowth in *Drosophila*. Over-proliferation results from overexpression of *crol* in the posterior compartment of the larval wing imaginal disc (right), compared with the control wing disc (left). GFP (green) marks the expression domain, phosphohistone H3 (red) indicates mitosis; DNA is stained blue. See research article by Mitchell et al. on p. 2707.



Dennis Summerbell was a leading, early contributor to the limb patterning field. As Jenna Galloway and Cliff Tabin discuss, his detailed, quantitative studies are exemplified by two *JEEM* papers, in which he provided elegant limb patterning models that remain relevant to this day. See *JEEM* classic on p. 2683.

## JEEM CLASSIC

- 2683** Classic limb patterning models and the work of Dennis Summerbell  
Galloway, J. L. and Tabin, C. J.

## MEETING REVIEW

- 2689** Functional diversity and mechanisms of action of the semaphorins  
Eickholt, B. J.

## RESEARCH ARTICLES

- 2695** Dynamic Fgf signaling couples morphogenesis and migration in the zebrafish lateral line primordium  
Lecaudey, V., Cakan-Akdogan, G., Norton, W. H. J. and Gilmour, D.
- 2707** The Ecdysone-inducible zinc-finger transcription factor Crol regulates Wg transcription and cell cycle progression in *Drosophila*  
Mitchell, N., Cranna, N., Richardson, H. and Quinn, L.
- 2717** Hedgehog signaling is involved in development of the neocortex  
Komada, M., Saitsu, H., Kinboshi, M., Miura, T., Shiota, K. and Ishibashi, M.
- 2729** Maternal depletion of CTCF reveals multiple functions during oocyte and preimplantation embryo development  
Wan, L.-B., Pan, H., Hannenhalli, S., Cheng, Y., Ma, J., Fedoriw, A., Lobanenko, V., Latham, K. E., Schultz, R. M. and Bartolomei, M. S.
- 2739** Dap160/intersectin binds and activates aPKC to regulate cell polarity and cell cycle progression  
Chabu, C. and Doe, C. Q.
- 2747** The *C. elegans* F-spondin family protein SPON-1 maintains cell adhesion in neural and non-neural tissues  
Woo, W.-M., Berry, E. C., Hudson, M. L., Swale, R. E., Goncharov, A. and Chisholm, A. D.
- 2757** Conditional ablation of Notch signaling in pancreatic development  
Nakhai, H., Siveke, J. T., Klein, B., Mendoza-Torres, L., Mazur, P. K., Algül, H., Radtke, F., Strobl, L., Zimmer-Strobl, U. and Schmid, R. M.
- 2767** Hedgehog and Wingless stabilize but do not induce cell fate during *Drosophila* dorsal embryonic epidermal patterning  
Vincent, S., Perrimon, N. and Axelrod, J. D.
- 2777** Crucial role of vHNF1 in vertebrate hepatic specification  
Lokmane, L., Haumaitre, C., Garcia-Villalba, P., Anselme, I., Schneider-Maunoury, S. and Cereghini, S.
- 2787** Cell-type-specific transcription of *prospero* is controlled by combinatorial signaling in the *Drosophila* eye  
Hayashi, T., Xu, C. and Carthew, R. W.
- 2797** BMP2 and BMP7 play antagonistic roles in feather induction  
Michon, F., Forest, L., Collomb, E., Demongeot, J. and Dhoulailly, D.
- 2807** Origin and shaping of the laterality organ in zebrafish  
Oteiza, P., Köppen, M., Concha, M. L. and Heisenberg, C.-P.
- ## DEVELOPMENT AND DISEASE
- 2815** Tissue-specific requirements of  $\beta$ -catenin in external genitalia development  
Lin, C., Yin, Y., Long, F. and Ma, L.