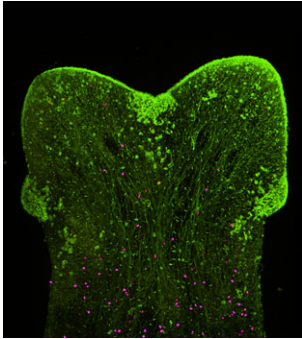
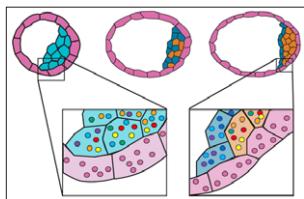


Development



Cover: A *Dugesia sanchezi* planarian that has regenerated two heads, immunostained for acetylated tubulin (green) and phospho-histone H3 (dividing cells, purple). This image, taken by Chang Liu of the Shanghai Institute of Biochemistry and Cell Biology at the 2012 Woods Hole Embryology Course, was chosen by readers of the Node (<http://thenode.biologists.com>).



Developmental plasticity is fundamental for growth. In this issue, Martínez Arias, Nichols and Schröter discuss the establishment of primary embryonic lineages and the spatiotemporal cues that guide this process. See **Hypothesis** on p. 3499.

SPOTLIGHT

- 3497** An interview with François Guillemot
Vicente, C.

HYPOTHESIS

- 3499** A molecular basis for developmental plasticity in early mammalian embryos
Martínez Arias, A., Nichols, J. and Schröter, C.

STEM CELLS AND REGENERATION

- 3511** Notch/Rbpjk signaling regulates progenitor maintenance and differentiation of hypothalamic arcuate neurons
Aujla, P. K., Naratadam, G. T., Xu, L. and Raetzman, L. T.
- 3522** The polyubiquitin gene *Ubi-p63E* is essential for male meiotic cell cycle progression and germ cell differentiation in *Drosophila*
Lu, C., Kim, J. and Fuller, M. T.
- 3532** The Osa-containing SWI/SNF chromatin-remodeling complex regulates stem cell commitment in the adult *Drosophila* intestine
Zeng, X., Lin, X. and Hou, S. X.
- 3541** Cell fate respecification and cell division orientation drive intercalary regeneration in *Drosophila* wing discs
Repiso, A., Bergantiños, C. and Serras, F.
- 3552** *Abdominal-B* and *caudal* inhibit the formation of specific neuroblasts in the *Drosophila* tail region
Birkholz, O., Vef, O., Rogulja-Ortmann, A., Berger, C. and Technau, G. M.
- 3565** An epigenetic switch is crucial for spermatogonia to exit the undifferentiated state toward a Kit-positive identity
Shirakawa, T., Yaman-Deveci, R., Tomizawa, S., Kamizato, Y., Nakajima, K., Sone, H., Sato, Y., Sharif, J., Yamashita, A., Takada-Horisawa, Y., Yoshida, S., Ura, K., Muto, M., Koseki, H., Suda, T. and Ohbo, K.
- 3577** Transcription factors *lhx1/5-1* and *pitx* are required for the maintenance and regeneration of serotonergic neurons in planarians
Currie, K. W. and Pearson, B. J.

RESEARCH REPORTS

- 3589** Gpr177 regulates pulmonary vasculature development
Jiang, M., Ku, W., Fu, J., Offermanns, S., Hsu, W. and Que, J.
- 3595** Cranial neural crest cells form corridors prefiguring sensory neuroblast migration
Freter, S., Fleenor, S. J., Freter, R., Liu, K. J. and Begbie, J.

RESEARCH ARTICLES

- 3601** A non-canonical role for the *C. elegans* dosage compensation complex in growth and metabolic regulation downstream of TOR complex 2
Webster, C. M., Wu, L., Douglas, D. and Soukas, A. A.
- 3613** The insulator protein Suppressor of Hairy-wing is an essential transcriptional repressor in the *Drosophila* ovary
Soshnev, A. A., Baxley, R. M., Manak, J. R., Tan, K. and Geyer, P. K.

- 3624** Histone variant H3.3 maintains a decondensed chromatin state essential for mouse preimplantation development
Lin, C.-J., Conti, M. and Ramalho-Santos, M.
- 3635** CAF-1 promotes Notch signaling through epigenetic control of target gene expression during *Drosophila* development
Yu, Z., Wu, H., Chen, H., Wang, R., Liang, X., Liu, J., Li, C., Deng, W.-M. and Jiao, R.
- 3645** Post-transcriptional regulation of myotube elongation and myogenesis by Hoi Polloi
Johnson, A. N., Mokalled, M. H., Valera, J. M., Poss, K. D. and Olson, E. N.
- 3657** Predetermined embryonic glial cells form the distinct glial sheaths of the *Drosophila* peripheral nervous system
von Hilchen, C. M., Bustos, Á. E., Giangrande, A., Technau, G. M. and Altenhein, B.
- 3669** GDNF is required for neural colonization of the pancreas
Muñoz-Bravo, J. L., Hidalgo-Figueroa, M., Pascual, A., López-Barneo, J., Leal-Cerro, A. and Cano, D. A.
- 3680** TEAD4 establishes the energy homeostasis essential for blastocoel formation
Kaneko, K. J. and DePamphilis, M. L.
- 3691** *Pax7* is regulated by *cMyb* during early neural crest development through a novel enhancer
Vadasz, S., Marquez, J., Tulloch, M., Shylo, N. A. and García-Castro, M. I.
- 3703** Phosphorylation of RNA polymerase II is independent of P-TEFb in the *C. elegans* germline
Bowman, E. A., Bowman, C. R., Ahn, J. H. and Kelly, W. G.