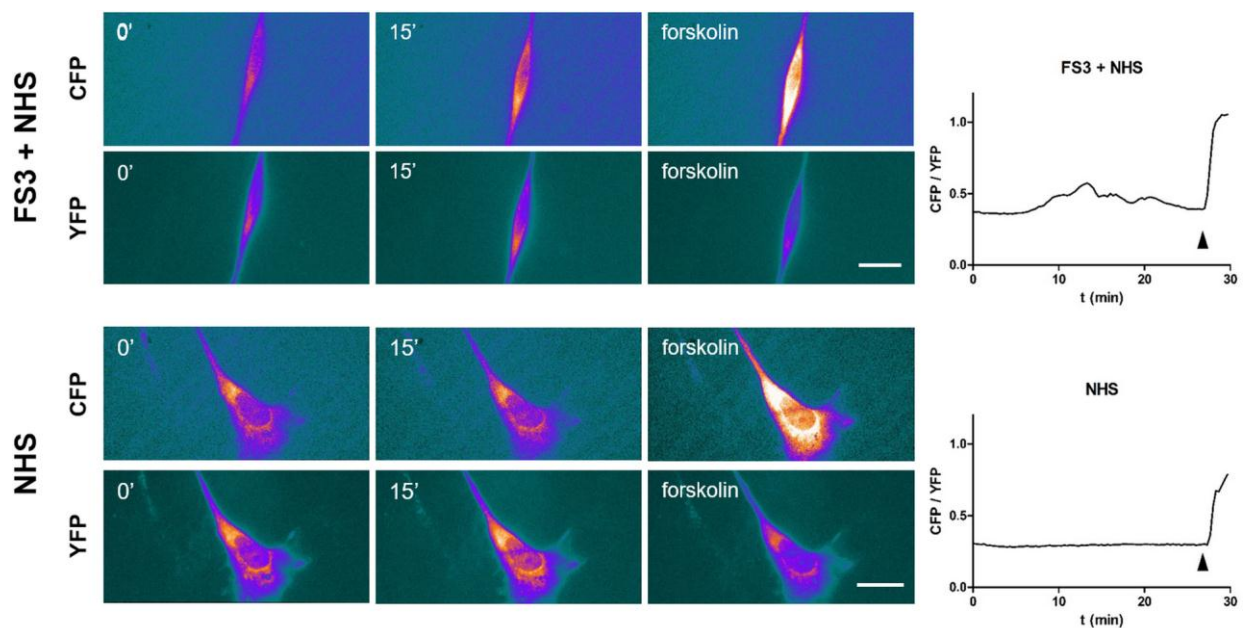


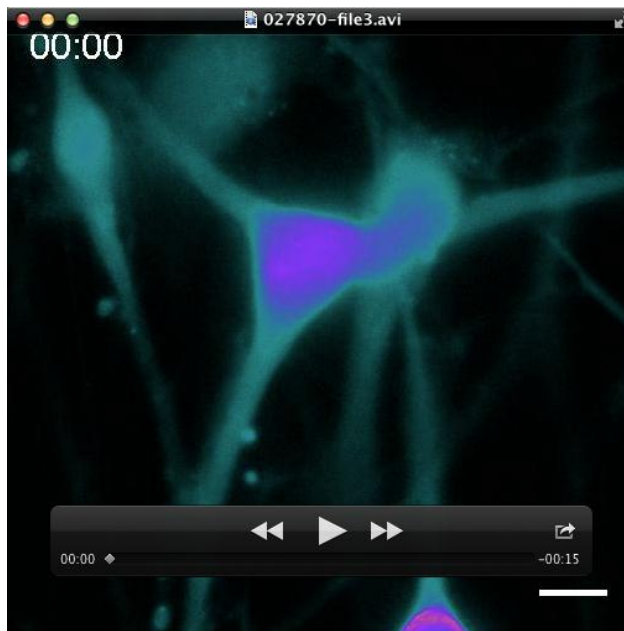
## SUPPLEMENTARY INFORMATION



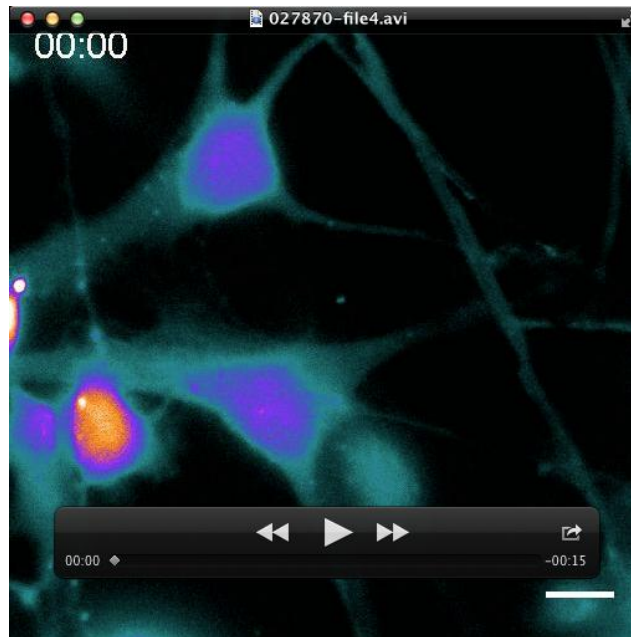
**Figure S1. Neuronal ATP triggers cAMP production in Schwann cells co-cultured with CGNs.** SCs in co-cultures with CGNs were transfected with the EPAC H187 sensor and FRET measured during exposure to FS3+NHS (complex added at  $t=1$  min) or NHS. Forskolin ( $25 \mu\text{M}$ ) was added at the end of the experiment ( $t=28$  min, arrowhead) as positive control. Scale bar:  $10 \mu\text{m}$ . Quantification is shown in the right panels, where FRET is expressed as the ratio between the donor and the acceptor signals (CFP/YFP), corrected for the background.



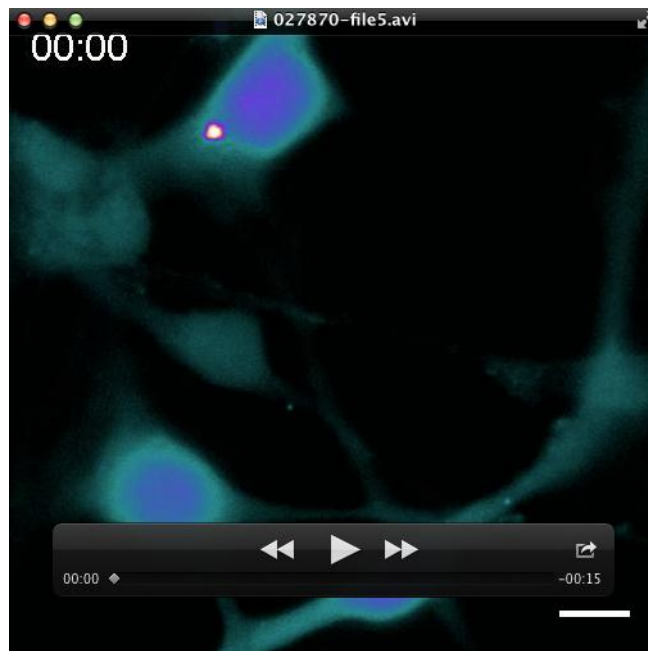
**Movie S1.** *Live-imaging* of  $[Ca^{2+}]_i$  in SCMN-SCs co-cultures exposed to FS3+NHS for 30 min. Images were collected every 20 sec. Scale bar: 10  $\mu$ m.



**Movie S2.** *Live-imaging* of  $[Ca^{2+}]_i$  in SCMN-SCs co-cultures exposed to FS3+NHS for 30 min in the presence of apyrase. Images were collected every 20 sec. Scale bar: 10  $\mu$ m.



**Movie S3.** *Live-imaging* of  $[Ca^{2+}]_i$  in CGNs-SCs co-cultures exposed to FS3+NHS for 30 min. Images were collected every 20 sec. Scale bar: 10  $\mu$ m.



**Movie S4.** *Live-imaging* of  $[Ca^{2+}]_i$  in CGNs-SCs co-cultures exposed to FS3+NHS for 30 min in the presence of apyrase. Images were collected every 20 sec. Scale bar: 10  $\mu$ m.