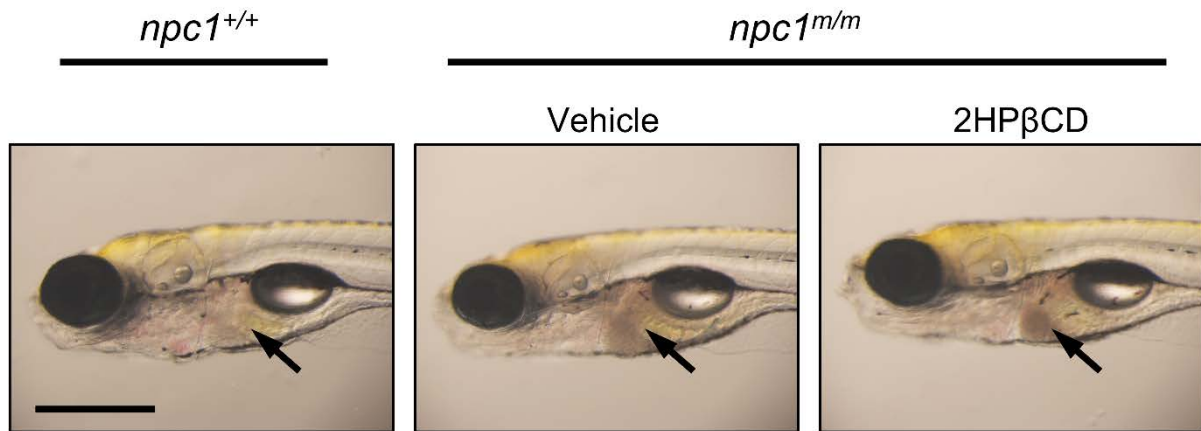


**Figure S1. The expression of Npc1 protein.** Npc1 Western blot analysis using total protein extract from wildtype and *npc1* homozygous mutant (both *npc1*<sup>hg37</sup> and *npc1*<sup>y535</sup> alleles) adult liver tissues. Npc1 was not detected in both *npc1*<sup>hg37</sup> and *npc1*<sup>y535</sup> homozygous mutants. Ponceau S staining was used to confirm equivalent protein loading in each lane.



**Figure S2. 2HPβCD treatment and Liver defect.** Lateral live image of *npc1<sup>+/+</sup>* and *npc1<sup>m/m</sup>* larvae at 7 dpf with or without 2HPβCD treatment (from 3 to 6 dpf). Arrows: liver. Scale bar = 500 μm.