

Figure S1. Immunohistochemistry of mouse undifferentiated sarcomas. (A) H&E staining showed tumours comprising spindle and pleomorphic cells without evidence of specific lineage differentiation histologically. Cells were (B) negative for p53, (C) positive for PDGFR β and (D) negative for CD31. Scale bars = 50 μ m.

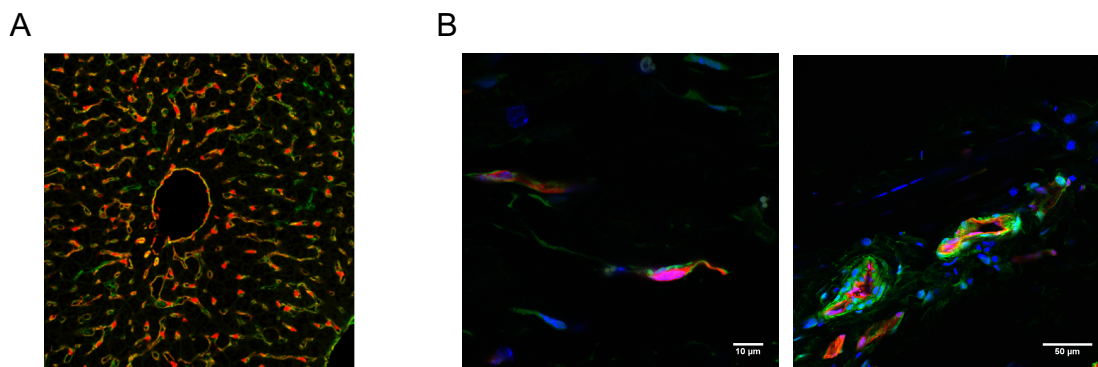


Figure S2. Confocal micrographs of fixed frozen liver (A) and dorsal skin (B) from *Cdh5-CreER^{T2}* mouse crossed with a tdTomato floxed reporter (*Ai14; Cdh5-CreER^{T2}*) showing cytosolic tdTomato fluorescence (red) and CD31 antibody cell surface staining (green). DAPI (blue) indicates nuclei.