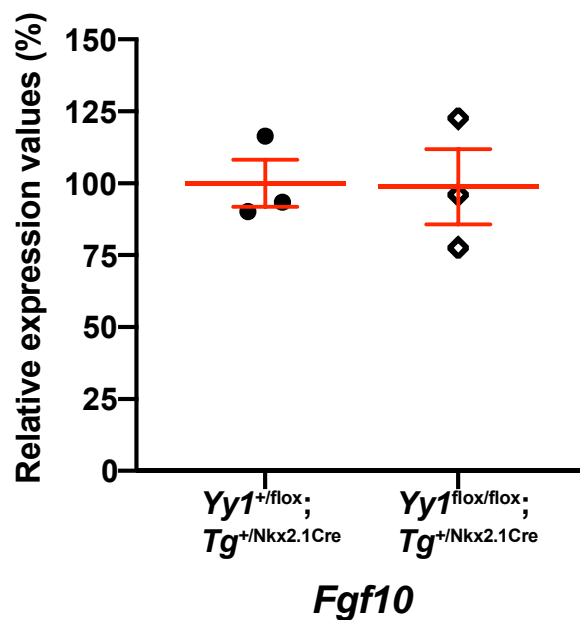
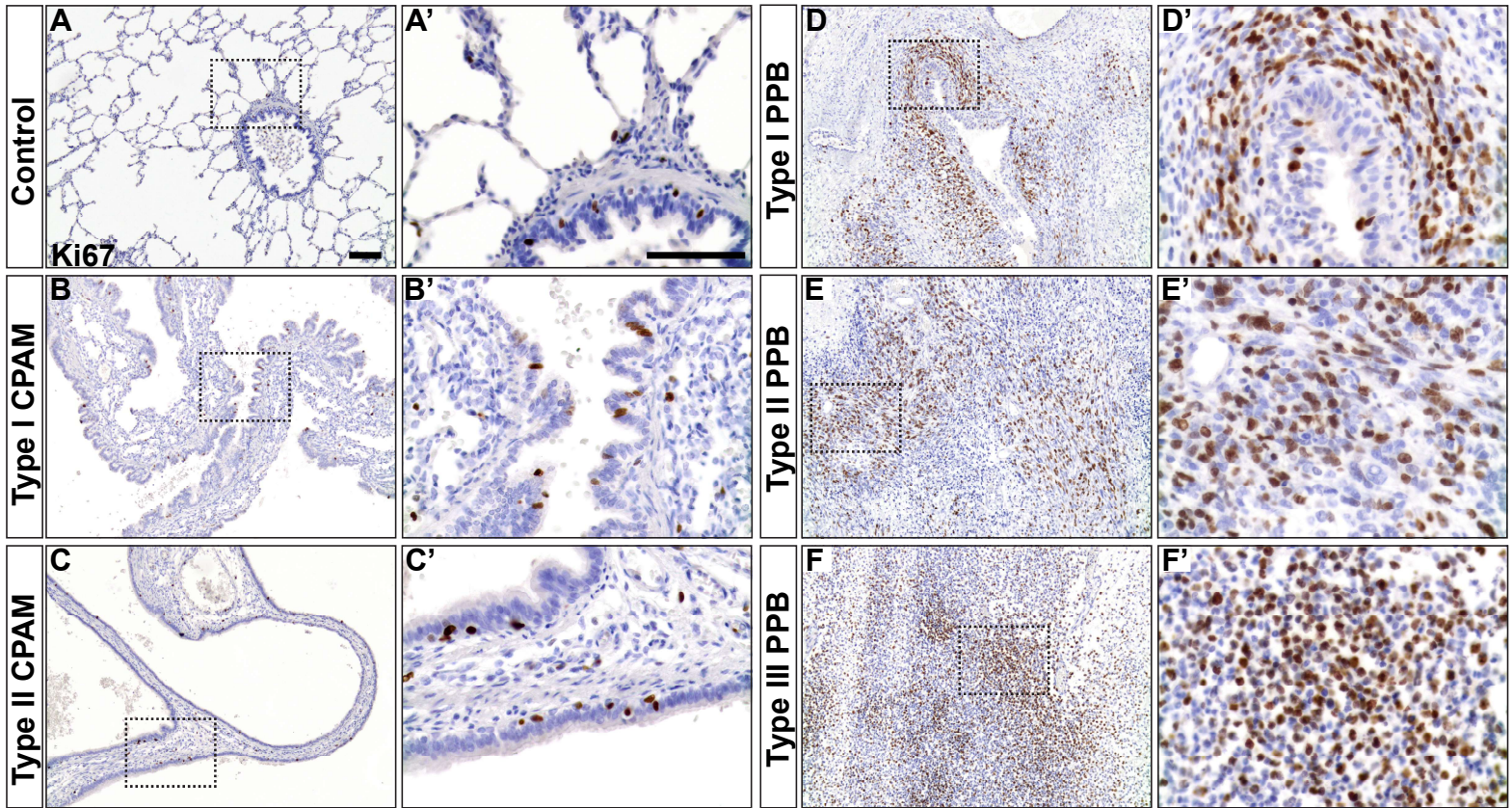


# Relative gene expression, adult mouse lungs



**Figure S1. *Fgf10* expression in mouse lung tissues.** qRT-PCR analysis of *Fgf10* expression levels in lungs from adult controls and *Yy1*<sup>flox/flox+</sup>; *Tg*<sup>+/Nkx2.1Cre</sup> surviving mice. Mean±s.e.m. are shown. (Mann-Whitney).



**Figure S2. Increased proliferation in PPB lung tissues.** (A-F') Representative micrographs showing Ki67 immunostaining in human lung biopsies from controls, CPAM (Type I and Type II) and PPB (Type I, Type II and Type III) patients indicated higher proliferation in the mesenchyme of PPB lung specimens while few proliferating cells were present in controls or CPAM samples. This higher proliferative index was indicative of PPB tumor progression. Right panels show higher magnification of the boxed area from the corresponding left panels. Scale bars: 100 $\mu$ m.

**Table S1. Gene expression analyses in lung specimens from  $Yy1^{\text{flox/flox}};Shh^{+/Cre}$  mouse mutants and from PPB and CPAM patients**

[Click here to Download Table S1](#)

**Table S2. General characteristics of patients**

[Click here to Download Table S2](#)

**Table S3. List of primer sequences**

[Click here to Download Table S3](#)

**Table S4. Statistical analyses**

[Click here to Download Table S4](#)