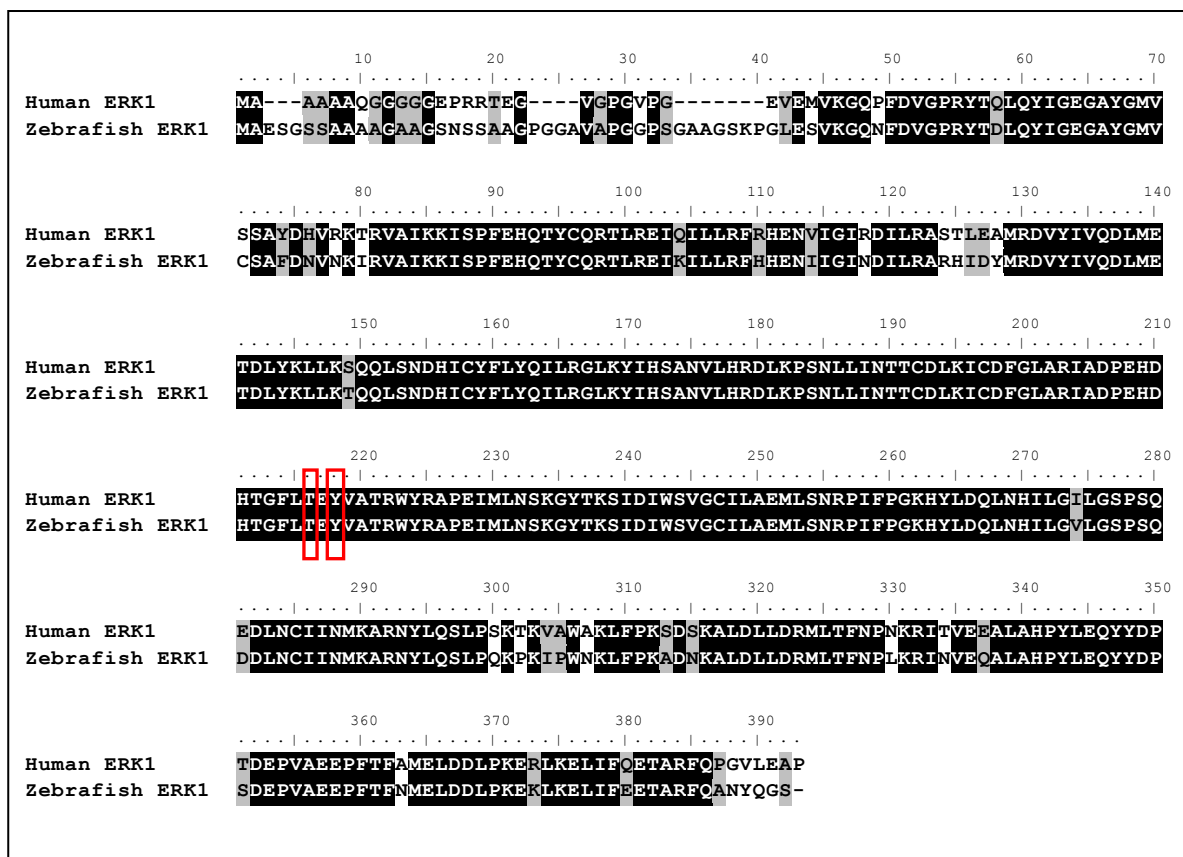
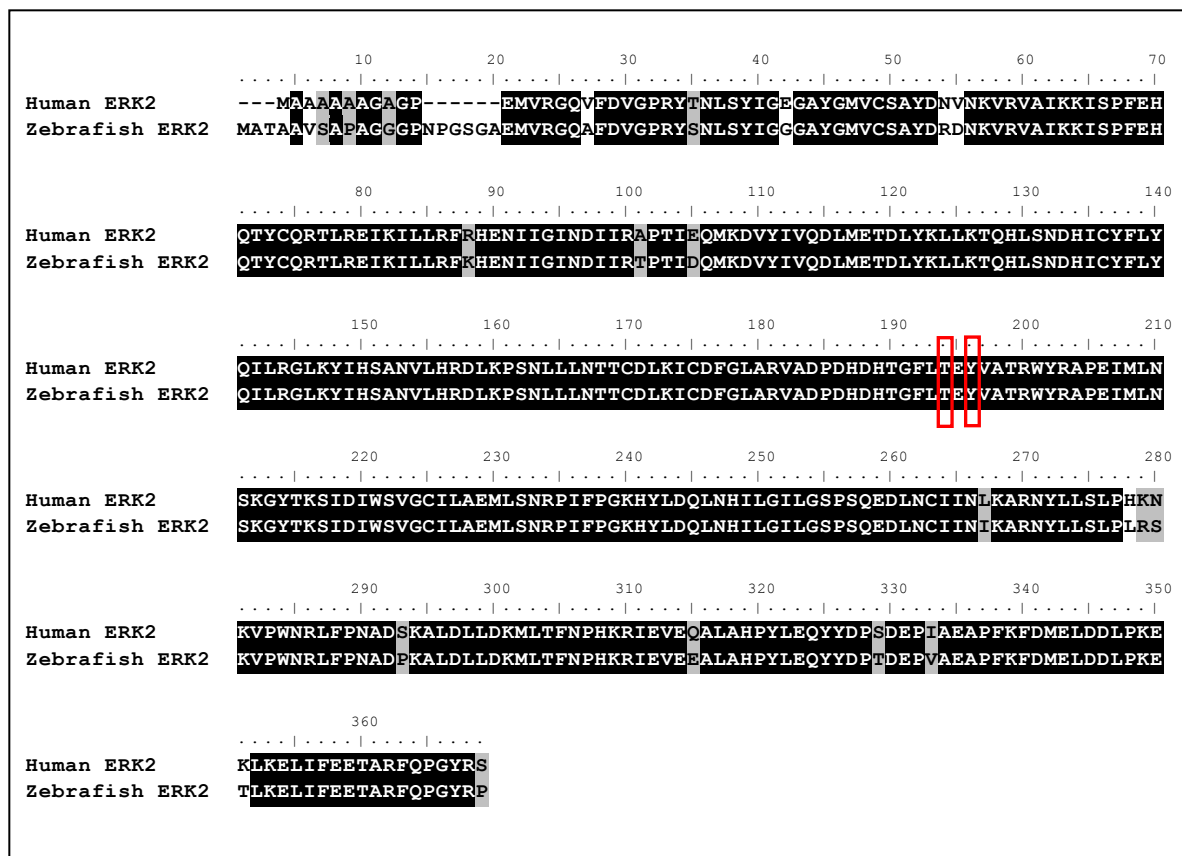


DMM001149 Figure S3A



DMM001149 Figure S3B



DMM001149 Figure S3C

```
..... 10 20 30 40 50 60 70
Human AKT1 MSDVAIVKEGWLHKR--GEYIKTWRPRYFLLKNDGTFIGYKERPODVDQREAPLNNFSVAQCQLMKTER
Zebrafish Akt1 QLDSCIIEKERLLTEVCLLGEYIKTWRPRYFLLKSDGTFIGYKERPODVDQLETPLNNFSVAQCQLMKTER
Human AKT2 MNEVSVIKEGWLHKR--GEYIKTWRPRYFLLKSDGSFIGYKERPEAPDQTLPLNNFSVAECQLMKTER
Zebrafish AKT2a MNEISVVREGWLHKR--GEYIKTWRPRYFLLKSDGSFIGYKEKPELTDANQPPLNNFSVAECQLMKTER
Zebrafish Akt2b MTELSVVKEGWLLKR--GEYIKTWRPRYFLLKSDGSFIGYKEKPELTDQSYAPLNNFSVEECQLMKTER
Human AKT3 MSDVTVIKEGWVQKR--GEYIKNWRPRYFLLKSDGSFIGYKEKPODVD-LPYPLNNFSVAKCQLMKTER
Zebrafish Akt3a MNDLNVVKEGWVQKR--GEYIKNWRPRYFLLKSDGSFIGYKEKPODAD-LAYPLNNFSVAKCQLMKTER
Zebrafish Akt3b -----GEYIKNWRPRYFLLKSDGSFIGYKEKPODAD-LPYPLNNFSVAKCQLMKTER

..... 80 90 100 110 120 130 140
Human AKT1 PRPNTFIIIRCLQWTTVIERTFHVETPEE--REEWTTAIQTVA DGLKKQEE--EEMDFRSGSPSDNSGAE
Zebrafish Akt1 PKPNTFIIIRCLQWTTVIERTFHVETPEE--ROEWTKAIQTVAESLQKQEE--EMMDAS-----AEHTD
Human AKT2 PRPNTFVIRCLQWTTVIERTFHVDSPEDE--REEWRAIQMVANSIKQRAPGEDPMDYKCGSPSDSSTTEE
Zebrafish AKT2a PRPNTFVIRCLQWTTVIERTFHVDSNSE--REEWIRAIQAVANGLKSRREE--DEPMDINFGSPGDNS-LEG
Zebrafish Akt2b PRPNTFMIRCLQWTTVIERTFHVDSSEDE--RDEWMRAIQMVANGLQARDV--DEPMEIKYSPSDAL--ED
Human AKT3 PKPNTFIIIRCLQWTTVIERTFHVDTPPEE--REEWTEAIQAVADRLQORQEE--ERMNCSPTSQIDNIGEEE
Zebrafish Akt3a PKPNTFIIIRCLQWTTVIERTFHVDTPPEERTDEWVEAIQMVADKLAKQEE--EGILCSPTSQIENVNEEE
Zebrafish Akt3b PKPNTFIIIRCLQWTTVIERTFHVDTPPEE--RDEWAEAIQMVADKLQORQEE--ERIQCSPSTSQIDNMGEEE

..... 150 160 170 180 190 200 210
Human AKT1 MEVSLAKPKHRVFMNDFEYLKLLGKGTFGKVIIVREKATGRYYAMKILKKEVI IAKDEVAHTLTENRVLQ
Zebrafish Akt1 METSLSKPPHKVFMNDFEYLKLLGKGTFGKVIIVREKATGRYYAMKILKKEVI IAKDEVAHTLTENRVLQ
Human AKT2 MEVAVSKARAKVFMNDFDYLLKLLGKGTFGKVIIVREKATGRYYAMKILRKEVI IAKDEVAHTVTESRVLQ
Zebrafish AKT2a MEAAITKSRTKVFMSDFDYLLKLLGKGTFGKVIIVREKATGMYYAMKILRKEVI IAKDEVAHTVTESRVLQ
Zebrafish Akt2b MEMCLSKSSSRVFMNDFDYLLKLLGKGTFGKVIIVREKASGMYYAMKILRKEVI IAKDEVAHTVTESRVLQ
Human AKT3 MDASTTHHKRK--FMNDFDYLLKLLGKGTFGKVIIVREKASGKYYAMKILKKEVI IAKDEVAHTLTESRVLK
Zebrafish Akt3a MDTSTSHHKRK--FMNDFDYLLKLLGKGTFGKVIIVREKASGTYAMKILKKEVI IAKDEVAHTLTESRVLK
Zebrafish Akt3b MDTSISHHKRK--FMNDFDYLLKLLGKGTFGKVIIVREKASGKYYAMKILKKEVI IAKDEVAHTLTESRVLK

..... 220 230 240 250 260 270 280
Human AKT1 NSRHPFLTALKYSFQTHDRLCFVMEYANGGELFFHLSRERVFSEDRARFYGAEIVSALDYLHSEKNV VYR
Zebrafish Akt1 NSRHPFLTALKSSFQTHDHLCFVMEYANGGELFFHLSRERVFSERA CFYGAEIVSALHLYLHSERNV VYR
Human AKT2 NTRHPFLTALKYAFQTHDRLCFVMEYANGGELFFHLSRERVFTEDRARFYGAEIVSALEYLH SRD-VVYR
Zebrafish AKT2a NTRHPFLTALKYAFQTRDRLCFVMEYANGGELFFHLSRERVFTEDRARFYGAEIVSALEYLH SKD-VVYR
Zebrafish Akt2b NTRHPFLTALKYAFQTHDRLCFVMEYANGGELFFHLSRERVFSEDRARFYGAEIVSALDYLH SQN-VVYR
Human AKT3 NTRHPFLTSLKYSFQTKDRLCFVMEYVNGGELFFHLSRERVFSEDRTRFYGAEIVSALDYLH SGK-IVYR
Zebrafish Akt3a NTRHPFLTSLKYSFQTKDRLCFVMEYVNGGELFFHLSRERVFSEDRTRFYGAEIVSALDYLH SAK-IVYR
Zebrafish Akt3b NTRHPFLTSLKYSFQTKDRLCFVMEYVNGGELFFHLSRERVFSEDRTRFYGAEIVSALDYLH SAK-IVYR

..... 290 300 310 320 330 340 350
Human AKT1 DLKLENLMLDKDGHIKITDFGLCKEGIKDGAATMKTF CGTPEYLAPEVLEDNDYGRAVDWWGLGVV MYEMM
Zebrafish Akt1 DLKLENLMLDKDGHVKITDFGLCKEGITDGAATMKTF CGTPEYLAPEVLEDNDYGRAVDWWGLGVV MYEMM
Human AKT2 DLKLENLMLDKDGHIKITDFGLCKEGITDGAATMKTF CGTPEYLAPEVLEDNDYGRAVDWWGLGVV MYEMM
Zebrafish AKT2a DLKLENLMLDKDGHIKITDFGLCKEGITNEATMKTF CGTPEYLAPEVLEDNDYGRAVDWWGLGVV MYEMM
Zebrafish Akt2b DLKLENLMLDNDGHIKITDFGLCKEGITDEATMKTF CGTPEYLAPEVLEDNDYGRAVDWWGLGVV MYEMM
Human AKT3 DLKLENLMLDKDGHIKITDFGLCKEGITDGAATMKTF CGTPEYLAPEVLEDNDYGRAVDWWGLGVV MYEMM
Zebrafish Akt3a DLKLENLMLDKDGHIKITDFGLCKEGITDGAATMKTF CGTPEYLAPEVLEDNDYGRAVDWWGLGVV MYEMM
Zebrafish Akt3b DLKLENLMLDKDGHIKITDFGLCKEGITDGAATMKTF CGTPEYLAPEVLEDNDYGRAVDWWGLGVV MYEMM
```

DMM001149 Figure S3(C) ctd. and S3(D)

