

The adipose organ at a glance

Saverio Cinti^{1,2}

The main parenchymal cells of the adipose organ are adipocytes. White adipocytes store energy, whereas brown adipocytes dissipate energy for thermogenesis. These two cell types with opposing functions can both originate from endothelial cells, and co-exist in the multiple fat depots of the adipose organ – a feature that I propose is crucial for this organ's plasticity. This poster review provides an overview of the adipose organ, describing its anatomy, cytology, physiological function and histopathology in obesity. It also highlights the remarkable plasticity of the adipose organ, explaining theories of adipocyte transdifferentiation during chronic cold exposure, physical exercise or lactation, as well as in obesity. White-to-brown adipocyte transdifferentiation is of particular medical relevance, because animal data indicate that higher amounts of brown adipose tissue are positively associated with resistance to obesity and its co-morbidities, and that 'browning' of the adipose organ curbs these disorders.

Introduction

Adipose tissues are generally regarded as connective tissues without a specific anatomy. However, accumulating data support the idea that adipose tissues are organized to form a large organ with discrete anatomy, specific vascular and nerve supplies, complex cytology, and high physiological plasticity (Cinti, 1999; Cinti, 2011). The organ is made up of several depots located in two compartments of the body: some are below the skin (subcutaneous depots) and some are in the trunk (visceral depots). Adipose tissues can thus be considered a multi-depot organ (Cinti, 2001; Cinti, 2005). This organ contributes to many of an organism's crucial survival needs: thermogenesis, lactation, immune responses and fuel for metabolism. In this article and the accompanying poster, I provide a brief overview of the adipose organ in mice and humans, touching on cytology, physiological function and dynamics during health and disease. Because most of the data available derive from mouse studies, the poster illustrates the adipose organ of mice; however, many of the anatomical, physiological and pathological

aspects are common to the adipose organ of humans. The anatomy of female mice is shown to emphasize changes in the adipose organ that occur during pregnancy and lactation.

Cytology

The main parenchymal cells of the adipose organ are called adipocytes. There are two main types of adipocytes, which are easy to distinguish by morphology: white adipocytes [see top scanning electron microscopy (SEM) image in blue panel of poster] are leptin- and S100-B-immunoreactive spherical cells with ~90% of their volume comprising a single cytoplasmic lipid droplet and a 'squeezed' nucleus, whereas brown adipocytes (see bottom SEM image in blue panel of poster) are polygonal cells with a roundish nucleus and several cytoplasmic lipid droplets. Brown adipocytes are also characterized by numerous large mitochondria packed with cristae. Mitochondria in brown adipocytes are marked by the expression of uncoupling protein 1 (UCP1), a unique protein that uncouples oxidative phosphorylation from ATP synthesis and thereby results in the production of heat (thermogenesis) (Cannon and Nedergaard, 2004; Ricquier, 2005; Frontini et al., 2007). Thus, white and brown adipocytes are quite different in their morphology and physiology: white adipocytes store energy for the metabolic needs of the organism, whereas brown adipocytes burn energy for thermogenesis. Both cell types are contained in the multiple depots of the adipose organ (Murano et al., 2005; Murano et al., 2009; Vitali et al., 2012). White adipocytes of different sizes are present in subcutaneous depots (mainly large adipocytes) and visceral depots (mainly small adipocytes) (Murano et al., 2008; Barbatelli et al., 2010). Brown adipocytes in visceral depots are mainly found near the aorta. Paucilocular adipocytes, which are cells with intermediate morphology between that of white and brown adipocytes, are also present in the adipose organ. It should be noted that some groups also refer to 'beige' (Ishibashi and Seale, 2010) or 'brite' (brown in white) (Petrovic et al., 2010; Waldén et al., 2012) regions of white adipose tissue, containing brown or brown-like adipocytes.

Anatomy

In mice, the adipose organ is made up of two subcutaneous depots and several visceral depots. The anterior subcutaneous depot is quite complex (Frontini and Cinti, 2010; Vitali et al., 2012). Its main volume is located in the upper dorsal area at the level of the scapulae. Several parts of it have been described in literature as distinct depots: interscapular, subscapular, axillary and cervical. The posterior subcutaneous depot is located mainly in the lower ventral part of the body, and is formed of three parts (also often described as distinct depots): dorso-lumbar, inguinal and gluteal. One or two lymph nodes are present in the dorso-lumbar and inguinal parts. The truncal depots are contained in the mediastinum and abdomen. All truncal depots are closely associated with the aorta and its main collaterals. In females, perirenal, periovarian, parametrial and perivesical fat form a single anatomical structure called the

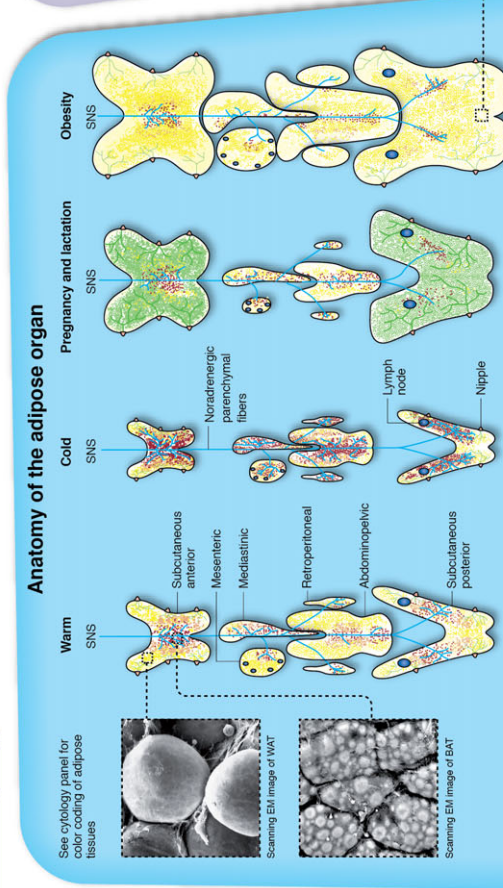
¹Department of Experimental and Clinical Medicine, Azienda Ospedali Riuniti-University of Ancona (Politecnica delle Marche), 60020 Ancona, Italy

²The Adipose Organ Laboratory, IRCCS San Raffaele Pisana, 00163 Rome, Italy
e-mail: cinti@univpm.it

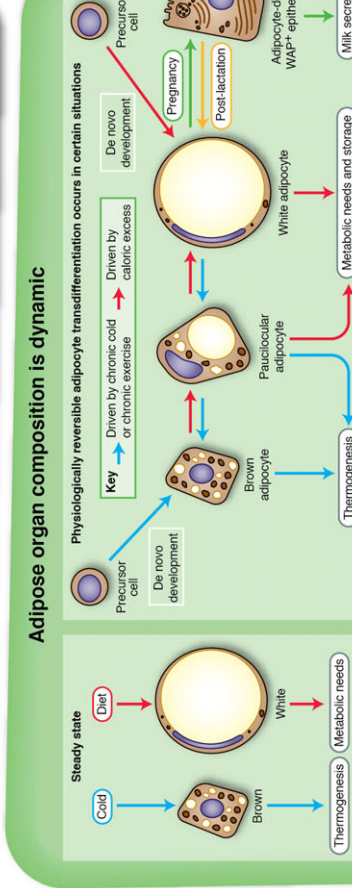
© 2012. Published by The Company of Biologists Ltd
This is an Open Access article distributed under the terms of the Creative Commons Attribution Non-Commercial Share Alike License (<http://creativecommons.org/licenses/by-nc-sa/3.0/>), which permits unrestricted non-commercial use, distribution and reproduction in any medium provided that the original work is properly cited and all further distributions of the work or adaptation are subject to the same Creative Commons License terms.

The adipose organ at a glance

Saverio Cinti



Diagrams show the adipose organ of female mice under different conditions. In normal conditions, BAT is present in central regions surrounding the aorta (not shown). Chronic cold (or chronic exercise) causes an increase in the relative amount of BAT throughout the adipose organ, which promotes thermogenesis and has a favorable outcome on metabolism. BAT is 5-6 times more vascularized and innervated than WAT. Pregnancy and lactation induce reversible changes in the size and composition of fat depots to support mammary gland function. In obesity, the size of all fat depots increases, and the relative amount of BAT and adipose organ innervation decreases. Patch regions represent paucilocular adipocytes. Some studies refer to brown adipocytes in WAT as 'triple' adipose tissue, or tissue containing 'beige' adipocytes (see main text for details). Pericardic and omental depots are small and not shown. Scanning EM images from Cinti, 1999, with permission.



Evidence suggests that adipocyte transdifferentiation might underlie the changes in adipose organ composition that are observed in response to chronic cold or exercise, caloric excess or pregnancy/lactation. De novo adipocyte development is also stimulated by these conditions (see top right panel for details). The factors driving these transdifferentiation pathways are under investigation, but might include those detailed in Box 1 (see main text).

Abbreviations: BAT, brown adipose tissue; IL-1 β , interleukin-1 β ; IL-6, interleukin-6; MAC2, also known as LGALS3 (galectin-3); S100-B, S100 protein beta chain; SNS, sympathetic nervous system; TNF α , tumor necrosis factor- α ; UCP1, uncoupling protein 1; WAP, whey acidic protein; WAT, white adipose tissue.

This is an Open Access article distributed under the terms of the Creative Commons Attribution Non-Commercial Share Alike License (<http://creativecommons.org/licenses/by-nc-sa/3.0/>), which permits unrestricted non-commercial use, distribution and reproduction in any medium provided that the original work is properly cited. For more information on the Creative Commons Attribution Non-Commercial Share Alike License, please visit <http://creativecommons.org/licenses/by-nc-sa/3.0/>.

© 2012, Published by The Company of Biologists Ltd.

This article is part of a special issue on obesity: see related articles in Vol. 5, issue 5 of *Disease Models & Mechanisms* at <http://dmm.biologists.org/content/5/5/508>

Disease Models & Mechanisms (2012) 5, 588-594

abdominopelvic depot (Murano et al., 2005; Frontini and Cinti, 2010; Vitali et al., 2012). Furthermore, subcutaneous depots in female mice are infiltrated by ramified epithelial ducts ending in five symmetrical pairs of nipples; thus, in female mice, all of the subcutaneous tissue can be considered as part of ten mammary glands (see Cinti, 1999; Masso-Welch et al., 2000).

The composition of the adipose organ varies in different anatomical locations, and under different conditions, as represented by different colors in the blue panel of the poster. In normal animals in a warm environment, regions close to the aorta and its main collaterals are shown in brown, representing brown adipose tissue (BAT). Note that brown adipocytes are normal components of several subcutaneous and visceral depots and are not exclusive to interscapular fat. BAT is mainly formed of UCP1-expressing brown adipocytes, a rich capillary network and a high density of noradrenergic parenchymal fibers (shown as blue lines in the poster). The majority of the adipose organ is shown in yellow in the poster, representing white adipose tissue (WAT), which is mainly formed of leptin- and S100-B-expressing white adipocytes (Cinti et al., 1989; Barbatelli et al., 1993; Cinti et al., 1997) and a network that is five- to six-times less vascularized and innervated than BAT (Nechad, 1986). The areas shown in peach are mainly composed of paucilocular cells that can be positive for UCP1 and S100-B, depending on their differentiation stage (Barbatelli et al., 1993). On the basis of electron microscopy, paucilocular cells show features that are intermediate between white and brown adipocytes, including mitochondrial pleomorphism (Barbatelli et al., 2010), as illustrated in the green panel of the poster.

Pericardic, omental (which are very small in mice and not represented in the poster), mesenteric and subcutaneous depots are characterized by the presence of lymphatic tissue (Cinti, 2011). Moreover, mesenteric, omental and pericardic fat contain lymphocytes that are in close contact with adipocytes. Of note, lymphocytes express the leptin receptor, and visceral fat lymphocytes have been discovered to have specific functional properties (Fantuzzi and Faggioni, 2000; Moro et al., 2010). Furthermore, there are one or two lymph nodes in the posterior subcutaneous depots as well as in other anatomical sites such as the popliteal fat depots (Almind et al., 2007). Thus, it is reasonable to assume a functional relationship between adipocytes and lymphocytes, and this could be altered in obesity.

Dynamics of adipose organ composition Innervation and adaptation to temperature changes

The adipose organ is innervated (Bartness and Bamshad, 1998; Giordano et al., 2008; Bartness et al., 2010), enabling it to interface with the nervous system and respond to physiological and environmental cues. Nerve endings in adipose tissue reach the vasculature and adipocytes (Cannon et al., 1986). Most of the parenchymal fibers (i.e. nerve fibers in contact with adipocytes) express tyrosine hydroxylase (TH), an enzyme that is widely considered to be a marker of noradrenergic fibers (Giordano et al., 2008). Thermogenesis is required when animals are exposed to temperatures below thermoneutrality and implies sympathetic nervous system activation (Himms-Hagen, 1986). Norepinephrine acts on beta3 adrenoceptors, which promote the molecular pathway for thermogenesis in brown adipocytes (Cannon and Nedergaard, 2004). Our own data show that the density of TH-

expressing parenchymal fibers is much higher in the brown parts of the adipose organ than in white parts and, during cold exposure, the density of these fibers increases in parallel with the increase in number of brown adipocytes (Murano et al., 2009; Vitali et al., 2012). Thus, the adipose organ of cold-exposed mice is browner and more densely innervated than the adipose organ of mice in a warm environment, as shown in the blue panel of the poster.

The adipose organ of humans behaves similarly to the adipose organ of mice. Metabolically active BAT is detectable by positron emission tomography (PET) (Nedergaard et al., 2007; Cypess et al., 2009; Saito et al., 2009; van Marken Lichtenbelt et al., 2009; Virtanen et al., 2009). Similarly to mouse BAT, human BAT is composed of UCP1-expressing adipocytes that are densely innervated by TH-immunoreactive fibers (Zingaretti et al., 2009). Interestingly, cold-exposed normal subjects and patients suffering from pheochromocytoma (a norepinephrine-secreting tumor of the adrenal gland) show increased BAT by PET with an anatomic distribution similar to that of mice – that is, closely associated with the aorta and its main collaterals (Kuji et al., 2008; Saito et al., 2009).

Adipose organ plasticity

The origin of newly formed brown adipocytes in the adipose organ of cold-exposed animals – a phenomenon referred to as ‘browning’ – is under debate (Timmons et al., 2007; Seale et al., 2008; Barbatelli et al., 2010). Notably, data obtained from three independent groups using different experimental approaches support the idea that brown-like adipocytes arising in predominantly white fat depots in response to cold exposure are ontogenically different from those in the classic interscapular BAT (Atit et al., 2006; Seale et al., 2008; Petrovic et al., 2010).

Our own data support the idea that most of the brown adipocytes responsible for the browning phenomenon observed after adrenergic stimulus or cold exposure (with the exception of the interscapular fat) derive from a direct transformation of white adipocytes into brown adipocytes (white-to-brown transdifferentiation) (Himms-Hagen et al., 2000; Barbatelli et al., 2010). The recent discovery that both brown and white adipocytes derive from vascular endothelial cells of the adipose organ brings strong new support to the transdifferentiation theory (Tran et al., 2012; Gupta et al., 2012). However, it should be noted that other routes of adipocyte differentiation have been proposed (Crossno et al., 2006; Maumus et al., 2011; Lee et al., 2012). The transdifferentiation theory explains why these two different cell types are contained together in the same organ: in special cases (such as chronic cold exposure) the white part of the organ might ‘help’ the brown part by forming new BAT (Cinti, 2009a). The many reasons supporting our theory of transdifferentiation are discussed in more detail elsewhere (Cinti, 2009a; Cinti, 2009b; Cinti, 2011). Notably, WAT also expresses beta3 adrenoceptors (De Matteis et al., 2002), and the browning phenomenon is blunted in beta3 adrenoceptor knockout mice (Jimenez et al., 2003; Barbatelli et al., 2010). In addition, a wide variety of other mechanisms have been reported to be involved in BAT activation and browning of the adipose organ (see Box 1).

The potential to manipulate the inherent plasticity of the adipose organ is important because it is widely accepted that animals with more BAT are more resistant to obesity and type 2 diabetes (T2D)

Box 1. Mechanisms reportedly involved in BAT activation and browning of the adipose organ

- Enhancement of the activity of the regulatory subunit R1 α of the cAMP-dependent protein kinase A (PKA) (Cummings et al., 1996)
- Activation of peroxisome proliferator-activated receptor- γ (PPAR γ) (Toseland et al., 2001)
- Inhibition of the activity of 4E-BP1, which represses translation of PPAR γ coactivator-1 α (PGC1 α) (Tsukiyama-Kohara et al., 2001)
- Activation of the activity of forkhead box protein C2 (FOXC2), which increases the sensitivity of the β -adrenergic cAMP-PKA signaling pathway (Cederberg et al., 2001)
- Inhibition of retinoblastoma (Rb) protein activity (Hansen et al., 2004)
- Inhibition of RIP140 [also known as nuclear receptor-interacting protein 1 (NRIP1)] (Leonardsson et al., 2004)
- Activation of the zinc-finger protein PRDM16 (Seale et al., 2007; Seale et al., 2011)
- Activation of bone morphogenetic protein 7 (BMP7) (Tseng et al., 2008)
- Activation of cyclooxygenase 2 (COX2) (Madsen et al., 2010; Vegiopoulos et al., 2010)
- Activation of the microRNA cluster comprising miR-193b-365 (Sun et al., 2011)
- Inhibition of the TGF β -SMAD3 system (Yadav et al., 2011)
- Activation of the evolutionarily conserved PLAC8 protein (Jimenez-Preitner et al., 2011)
- Inhibition of the gender-sensitive α -arrestin domain-containing 3 (ARRDC3) protein (Patwari et al., 2011)
- Activation of the growth factor FGF21 (Hondares et al., 2010; Fisher et al., 2012)
- Induction of myokine irisin (Boström et al., 2012)
- Activation of microRNA 196a (Mori et al., 2012)
- Inhibition of retinaldehyde dehydrogenase 1 (ALDH1A1) (Kiefer et al., 2012)

(Kopecky et al., 1996; Collins et al., 1997; Guerra et al., 1998; Almind et al., 2007; Vitali et al., 2012). Conversely, animals without functional BAT are prone to obesity and T2D (Lowell et al., 1993; Bachman et al., 2002; Feldmann et al., 2009). Furthermore, obesity in rats is curbed when they are treated with beta3 adrenoceptor agonists, which induce the browning phenomenon in WAT (Ghorbani et al., 1997; Ghorbani and Himms-Hagen, 1997). These data also seem to be valid for humans (Oberkofler et al., 1997; Cyppess and Kahn, 2010).

Very recently, a newly identified hormone named irisin, which is produced by skeletal muscle during physical exercise, has been shown to induce browning of WAT in mice (Boström et al., 2012). Administration of irisin to mice with diet-induced obesity and insulin resistance reduced these conditions. This hormone is also produced in humans, suggesting that it could be manipulated to modulate plasticity of the adipose organ. Thus, both physiological stimuli (such as cold or physical exercise) or pharmaceutical derivatives could be used for the treatment of obesity and related disorders.

Lactation: a special case for adipose organ plasticity

During pregnancy and lactation, all subcutaneous depots of female mice transform into milk-secreting glands. This hormone-regulated phenomenon suggests that there is a progressive reduction in the number of adipocytes in parallel with an increase in the number of epithelial cells that form the functional adenomeres of the mammary glands (shown as green lines in the blue panel of the poster). Data from our laboratory support the idea that these newly formed epithelial cells derive from a direct transformation of adipocytes into milk-secreting epithelial cells (adipo-epithelial transdifferentiation). The process seems to be reversible and the epithelial cells, which are marked by the expression of whey acidic protein (WAP; a milk protein expressed only in milk-secreting epithelial cells in mammary glands), revert into adipocytes in the post-lactation period (Morrioni et al., 2004; De Matteis et al., 2009).

Pathology

When the energy balance is positive (i.e. when food intake is greater than energy expenditure), the white part of the adipose organ expands. This expansion occurs via an increase in the volume of

existing adipocytes as well as the formation of new white adipocytes (Hausman et al., 2001). These newly formed white adipocytes develop from pre-adipocytes, but also from a direct transformation of brown into white adipocytes (Cinti et al., 1997; Bachman et al., 2002). It was recently discovered that knockdown of SMAD3 (a component of the TGF β signaling pathway) in mice induces browning of the adipose organ and protects from diabetes and obesity (Yadav et al., 2011), suggesting that TGF β could be involved in transdifferentiation. Notably, levels of TGF β are also correlated with body mass index. This completes the hypothesis of adipose organ plasticity: energy accumulation induces BAT to 'help' WAT store more energy (i.e. induces brown-to-white adipocyte transdifferentiation).

Storing of excess energy over time can lead to obesity and associated conditions, such as insulin resistance. These conditions are associated with adipose tissue pathology, to which many different factors probably contribute. In particular, macrophages seem to contribute to insulin resistance and other conditions associated with obesity. The obese adipose organ is infiltrated by macrophages, and macrophage infiltration of fat is coincident with the appearance of insulin resistance (Weisberg et al., 2003; Xu et al., 2003; Strissel et al., 2007). The number of macrophages is much higher in visceral than in subcutaneous fat, both in diet-induced and genetic obesity (Strissel et al., 2007; Murano et al., 2008). Macrophages [$>90\%$ of which are immunoreactive for galactose-specific lectin 3 (also known as MAC2)] form crown-like structures (CLSs) surrounding dead adipocytes, which are phagocytosed by the macrophages (see bottom-right panel of the poster) (Cinti et al., 2005). Tumor necrosis factor- α (TNF α), interleukin-6 (IL-6), interleukin-1 α (IL-1 α) and other pro-inflammatory cytokines are produced by macrophages, and the ability of such cytokines to interfere with the physiology of insulin receptor signaling is well known (Gregor and Hotamisligil, 2011). CLSs are also present in the fat of obese humans (Cinti et al., 2005). Macrophage infiltration is positively correlated with the size of adipocytes both in visceral and subcutaneous fat, but can occur independently of obesity per se, because lean mice deficient for hormone-sensitive lipase have hypertrophic adipocytes and the same amount of CLSs as obese mice (Cinti et al., 2005). Notably, obese mice and humans without

adipocyte hypertrophy (hyperplastic obesity) do not show CLSs in fat and are insulin sensitive (Cinti et al., 2005; Hoffstedt et al., 2010). Visceral adipocytes in obese mice are smaller than subcutaneous adipocytes, but visceral fat has a higher amount of CLSs, suggesting a different 'critical death size' (CDS) for adipocytes in visceral fat (Murano et al., 2008; Virtue and Vidal-Puig, 2010). Thus, visceral adipocytes die at a smaller CDS, which might explain the well-known dangerous metabolic consequences of visceral fat accumulation (Cinti, 2009a).

On the basis of the current data, the sequence of events linking obesity with insulin resistance could be:

- adipocyte hypertrophy due to obesity;
- adipocyte stress, possibly involving hypoxia (Wood et al., 2009) and the production of chemoattractants;
- chemoattraction and infiltration of macrophages;
- death of adipocytes on reaching the CDS (visceral adipocytes die first);
- chronic reabsorption of adipocyte remnants by macrophages, accompanied by a massive production of cytokines by macrophages;
- increased levels of circulating cytokines contributes to insulin resistance in peripheral tissues.

Conclusion

In conclusion, the adipose organ is a complex structure with highly plastic properties that include the ability of its parenchymal cells (the adipocytes) to reprogram their genes and transdifferentiate into cells with a different morphology and physiology (a state that is physiologically reversible). It is hoped that this plasticity of the adipose organ can be exploited in the next generation of therapeutic strategies to combat the increasing incidence of metabolic diseases, including obesity and T2D.

This article is part of a special issue on obesity: see related articles in Vol. 5, issue 5 of Dis. Model. Mech. at <http://dmm.biologists.org/content/5/5.toc>.

COMPETING INTERESTS

The authors declare that they do not have any competing or financial interests.

FUNDING

With support of Grant DIABAT European Community's FP7, Grant agreement number HEALTH-F2-2011-278373.

REFERENCES

- Almind, K., Manieri, M., Sivitz, W. I., Cinti, S. and Kahn, C. R. (2007). Ectopic brown adipose tissue in muscle provides a mechanism for differences in risk of metabolic syndrome in mice. *Proc. Natl. Acad. Sci. USA* **104**, 2366-2371.
- Atit, R., Sgaier, S. K., Mohamed, O. A., Taketo, M. M., Dufort, D., Joyner, A. L., Niswander, L. and Conlon, R. A. (2006). Beta-catenin activation is necessary and sufficient to specify the dorsal dermal fate in the mouse. *Dev. Biol.* **296**, 164-176.
- Bachman, E. S., Dhillon, H., Zhang, C. Y., Cinti, S., Bianco, A. C., Kobilka, B. K. and Lowell, B. B. (2002). betaAR signaling required for diet-induced thermogenesis and obesity resistance. *Science* **297**, 843-845.
- Barbatelli, G., Morroni, M., Vinesi, P., Cinti, S. and Michetti, F. (1993). S-100 protein in rat brown adipose tissue under different functional conditions: a morphological, immunocytochemical, and immunohistochemical study. *Exp. Cell Res.* **208**, 226-231.
- Barbatelli, G., Murano, I., Madsen, L., Hao, Q., Jimenez, M., Kristiansen, K., Giacobino, J. P., De Matteis, R. and Cinti, S. (2010). The emergence of cold-induced brown adipocytes in mouse white fat depots is determined predominantly by white to brown adipocyte transdifferentiation. *Am. J. Physiol. Endocrinol. Metab.* **298**, E1244-E1253.
- Bartness, T. J. and Bamshad, M. (1998). Innervation of mammalian white adipose tissue: implications for the regulation of total body fat. *Am. J. Physiol.* **275**, R1399-R1411.
- Bartness, T. J., Vaughan, C. H. and Song, C. K. (2010). Sympathetic and sensory innervation of brown adipose tissue. *Int. J. Obes.* **34**, S36-S42.
- Boström, P., Wu, J., Jedrychowski, M. P., Korde, A., Ye, L., Lo, J. C., Rasbach, K. A., Boström, E. A., Choi, J. H., Long, J. Z. et al. (2012). A PGC1- α -dependent myokine that drives brown-fat-like development of white fat and thermogenesis. *Nature* **481**, 463-468.
- Cannon, B. and Nedergaard, J. (2004). Brown adipose tissue: function and physiological significance. *Physiol. Rev.* **84**, 277-359.
- Cannon, B., Nedergaard, J., Lundberg, J. M., Hökfelt, T., Terenius, L. and Goldstein, M. (1986). 'Neuropeptide tyrosine' (NPY) is co-stored with noradrenaline in vascular but not in parenchymal sympathetic nerves of brown adipose tissue. *Exp. Cell Res.* **164**, 546-550.
- Cederberg, A., Grønning, L. M., Ahrén, B., Taskén, K., Carlsson, P. and Enerbäck, S. (2001). FOXO2 is a winged helix gene that counteracts obesity, hypertriglyceridemia, and diet-induced insulin resistance. *Cell* **106**, 563-573.
- Cinti, S. (1999). *The Adipose Organ*. Milan, Italy: Kurtis.
- Cinti, S. (2001). The adipose organ: morphological perspectives of adipose tissues. *Proc. Nutr. Soc.* **60**, 319-328.
- Cinti, S. (2005). The adipose organ. *Prostaglandins Leukot. Essent. Fatty Acids* **73**, 9-15.
- Cinti, S. (2009a). Reversible physiological transdifferentiation in the adipose organ. *Proc. Nutr. Soc.* **68**, 340-349.
- Cinti, S. (2009b). Transdifferentiation properties of adipocytes in the adipose organ. *Am. J. Physiol. Endocrinol. Metab.* **297**, E977-E986.
- Cinti, S. (2011). Between brown and white: novel aspects of adipocyte differentiation. *Ann. Med.* **43**, 104-115.
- Cinti, S., Cigolini, M., Morroni, M. and Zingaretti, M. C. (1989). S-100 protein in white preadipocytes: an immunoelectronmicroscopic study. *Anat. Rec.* **224**, 466-472.
- Cinti, S., Frederich, R. C., Zingaretti, M. C., De Matteis, R., Flier, J. S. and Lowell, B. B. (1997). Immunohistochemical localization of leptin and uncoupling protein in white and brown adipose tissue. *Endocrinology* **138**, 797-804.
- Cinti, S., Mitchell, G., Barbatelli, G., Murano, I., Ceresi, E., Faloi, E., Wang, S., Fortier, M., Greenberg, A. S. and Obin, M. S. (2005). Adipocyte death defines macrophage localization and function in adipose tissue of obese mice and humans. *J. Lipid Res.* **46**, 2347-2355.
- Collins, S., Daniel, K. W., Petro, A. E. and Surwit, R. S. (1997). Strain-specific response to beta 3-adrenergic receptor agonist treatment of diet-induced obesity in mice. *Endocrinology* **138**, 405-413.
- Crossno, J. T., Jr, Majka, S. M., Grazia, T., Gill, R. G. and Klemm, D. J. (2006). Rosiglitazone promotes development of a novel adipocyte population from bone marrow-derived circulating progenitor cells. *J. Clin. Invest.* **116**, 3220-3228.
- Cummings, D. E., Brandon, E. P., Planas, J. V., Motamed, K., Idzerda, R. L. and McKnight, G. S. (1996). Genetically lean mice result from targeted disruption of the RII beta subunit of protein kinase A. *Nature* **382**, 622-626.
- Cypess, A. M. and Kahn, C. R. (2010). Brown fat as a therapy for obesity and diabetes. *Curr. Opin. Endocrinol. Diabetes Obes.* **17**, 143-149.
- Cypess, A. M., Lehman, S., Williams, G., Tal, I., Rodman, D., Goldfine, A. B., Kuo, F. C., Palmer, E. L., Tseng, Y. H., Doria, A. et al. (2009). Identification and importance of brown adipose tissue in adult humans. *N. Engl. J. Med.* **360**, 1509-1517.
- De Matteis, R., Arch, J. R., Petroni, M. L., Ferrari, D., Cinti, S. and Stock, M. J. (2002). Immunohistochemical identification of the beta(3)-adrenoceptor in intact human adipocytes and ventricular myocardium: effect of obesity and treatment with ephedrine and caffeine. *Int. J. Obes. Relat. Metab. Disord.* **26**, 1442-1450.
- De Matteis, R., Zingaretti, M. C., Murano, I., Vitali, A., Frontini, A., Giannulis, I., Barbatelli, G., Marcucci, F., Bordinchia, M., Sarzani, R. et al. (2009). In vivo physiological transdifferentiation of adult adipose cells. *Stem Cells* **27**, 2761-2768.
- Fantuzzi, G. and Faggioni, R. (2000). Leptin in the regulation of immunity, inflammation, and hematopoiesis. *J. Leukoc. Biol.* **68**, 437-446.
- Feldmann, H. M., Golozoubova, V., Cannon, B. and Nedergaard, J. (2009). UCP1 ablation induces obesity and abolishes diet-induced thermogenesis in mice exempt from thermal stress by living at thermoneutrality. *Cell Metab.* **9**, 203-209.
- Fisher, F. M., Kleiner, S., Douris, N., Fox, E. C., Mepani, R. J., Verdeguer, F., Wu, J., Kharitonov, A., Flier, J. S., Maratos-Flier, E. et al. (2012). FGF21 regulates PGC-1 α and browning of white adipose tissues in adaptive thermogenesis. *Genes Dev.* **26**, 271-281.
- Frontini, A. and Cinti, S. (2010). Distribution and development of brown adipocytes in the murine and human adipose organ. *Cell Metab.* **11**, 253-256.
- Frontini, A., Rousset, S., Cassard-Doulier, A. M., Zingaretti, C., Ricquier, D. and Cinti, S. (2007). Thymus uncoupling protein 1 is exclusive to typical brown adipocytes and is not found in thymocytes. *J. Histochem. Cytochem.* **55**, 183-189.
- Ghorbani, M. and Himmis-Hagen, J. (1997). Appearance of brown adipocytes in white adipose tissue during CL 316,243-induced reversal of obesity and diabetes in Zucker fa/fa rats. *Int. J. Obes. Relat. Metab. Disord.* **21**, 465-475.

- Ghorbani, M., Claus, T. H. and Himms-Hagen, J.** (1997). Hypertrophy of brown adipocytes in brown and white adipose tissues and reversal of diet-induced obesity in rats treated with a beta3-adrenoceptor agonist. *Biochem. Pharmacol.* **54**, 121-131.
- Giordano, A., Frontini, A. and Cinti, S.** (2008). Adipose organ nerves revealed by immunohistochemistry. *Methods Mol. Biol.* **456**, 83-95.
- Gregor, M. F. and Hotamisligil, G. S.** (2011). Inflammatory mechanisms in obesity. *Annu. Rev. Immunol.* **29**, 415-445.
- Guerra, C., Koza, R. A., Yamashita, H., Walsh, K. and Kozak, L. P.** (1998). Emergence of brown adipocytes in white fat in mice is under genetic control. Effects on body weight and adiposity. *J. Clin. Invest.* **102**, 412-420.
- Gupta, R. K., Mepani, R. J., Kleiner, S., Lo, J. C., Khandekar, M. J., Cohen, P., Frontini, A., Bhowmick, D. C., Ye, L., Cinti, S. et al.** (2012). Zfp423 expression identifies committed preadipocytes and localizes to adipose endothelial and perivascular cells. *Cell Metab.* **15**, 230-239.
- Hansen, J. B., Jørgensen, C., Petersen, R. K., Hallenborg, P., De Matteis, R., Bøye, H. A., Petrovic, N., Enerbäck, S., Nedergaard, J., Cinti, S. et al.** (2004). Retinoblastoma protein functions as a molecular switch determining white versus brown adipocyte differentiation. *Proc. Natl. Acad. Sci. USA* **101**, 4112-4117.
- Hausman, D. B., DiGirolamo, M., Bartness, T. J., Hausman, G. J. and Martin, R. J.** (2001). The biology of white adipocyte proliferation. *Obes. Rev.* **2**, 239-254.
- Himms-Hagen, J.** (1986). Brown adipose tissue and cold-acclimation. In *Brown adipose tissue* (ed. P. Trayhurn and a. D. Nicholls), pp. 214. London: Edward Arnold.
- Himms-Hagen, J., Melnyk, A., Zingaretti, M. C., Ceresi, E., Barbatelli, G. and Cinti, S.** (2000). Multilocular fat cells in WAT of CL-316243-treated rats derive directly from white adipocytes. *Am. J. Physiol. Cell Physiol.* **279**, C670-C681.
- Hoffstedt, J., Arner, E., Wahrenberg, H., Andersson, D. P., Qvisth, V., Löfgren, P., Rydén, M., Thörne, A., Wirén, M., Palmér, M. et al.** (2010). Regional impact of adipose tissue morphology on the metabolic profile in morbid obesity. *Diabetologia* **53**, 2496-2503.
- Hondares, E., Rosell, M., Gonzalez, F. J., Giralt, M., Iglesias, R. and Villarroya, F.** (2010). Hepatic FGF21 expression is induced at birth via PPARalpha in response to milk intake and contributes to thermogenic activation of neonatal brown fat. *Cell Metab.* **11**, 206-212.
- Ishibashi, J. and Seale, P.** (2010). Medicine. Beige can be slimming. *Science* **328**, 1113-1114.
- Jimenez, M., Barbatelli, G., Allevi, R., Cinti, S., Seydoux, J., Giacobino, J. P., Muzzin, P. and Preitner, F.** (2003). Beta 3-adrenoceptor knockout in C57BL/6 mice depresses the occurrence of brown adipocytes in white fat. *Eur. J. Biochem.* **270**, 699-705.
- Jimenez-Preitner, M., Berney, X., Uldry, M., Vitali, A., Cinti, S., Ledford, J. G. and Thorens, B.** (2011). Plac8 is an inducer of C/EBPβ required for brown fat differentiation, thermoregulation, and control of body weight. *Cell Metab.* **14**, 658-670.
- Kiefer, F. W., Vernochet, C., O'Brien, P., Spoerl, S., Brown, J. D., Nallamshetty, S., Zeyda, M., Stulnig, T. M., Cohen, D. E., Kahn, C. R. et al.** (2012). Retinaldehyde dehydrogenase 1 regulates a thermogenic program in white adipose tissue. *Nat Med.* [Epub ahead of print] doi: 10.1038/nm.2757.
- Koepckey, J., Hodny, Z., Rossmeisl, M., Syrový, I. and Kozak, L. P.** (1996). Reduction of obesity in aP2-Ucp transgenic mice: physiology and adipose tissue distribution. *Am. J. Physiol.* **270**, E768-E775.
- Kuji, I., Imabayashi, E., Minagawa, A., Matsuda, H. and Miyauchi, T.** (2008). Brown adipose tissue demonstrating intense FDG uptake in a patient with mediastinal pheochromocytoma. *Ann. Nucl. Med.* **22**, 231-235.
- Lee, Y. H., Petkova, A. P., Mottillo, E. P. and Granneman, J. G.** (2012). In vivo identification of bipotential adipocyte progenitors recruited by β3-adrenoceptor activation and high-fat feeding. *Cell Metab.* **15**, 480-491.
- Leonardsson, G., Steel, J. H., Christian, M., Pockock, V., Milligan, S., Bell, J., So, P. W., Medina-Gomez, G., Vidal-Puig, A., White, R. et al.** (2004). Nuclear receptor corepressor RIP140 regulates fat accumulation. *Proc. Natl. Acad. Sci. USA* **101**, 8437-8442.
- Lowell, B. B., S-Susulic, V., Hamann, A., Lawitts, J. A., Himms-Hagen, J., Boyer, B. B., Kozak, L. P. and Flier, J. S.** (1993). Development of obesity in transgenic mice after genetic ablation of brown adipose tissue. *Nature* **366**, 740-742.
- Madsen, L., Pedersen, L. M., Lillefosse, H. H., Fjaere, E., Bronstad, I., Hao, Q., Petersen, R. K., Hallenborg, P., Ma, T., De Matteis, R. et al.** (2010). UCP1 induction during recruitment of brown adipocytes in white adipose tissue is dependent on cyclooxygenase activity. *PLoS ONE* **5**, e11391.
- Masso-Welch, P. A., Darcy, K. M., Stangle-Castor, N. C. and Ip, M. M.** (2000). A developmental atlas of rat mammary gland histology. *J. Mammary Gland Biol. Neoplasia* **5**, 165-185.
- Maurus, M., Peyrafitte, J. A., D'Angelo, R., Fournier-Wirth, C., Bouloumié, A., Casteilla, L., Sengenès, C. and Bourin, P.** (2011). Native human adipose stromal cells: localization, morphology and phenotype. *Int. J. Obes.* **35**, 1141-1153.
- Mori, M., Nakagami, H., Rodriguez-Araujo, G., Nimura, K. and Kaneda, Y.** (2012). Essential role for miR-196a in brown adipogenesis of white fat progenitor cells. *PLoS Biol.* **10**, e1001314.
- Moro, K., Yamada, T., Tanabe, M., Takeuchi, T., Ikawa, T., Kawamoto, H., Furusawa, J., Ohtani, M., Fujii, H. and Koyasu, S.** (2010). Innate production of T(H)2 cytokines by adipose tissue-associated c-Kit(+)Sca-1(+) lymphoid cells. *Nature* **463**, 540-544.
- Morrioni, M., Giordano, A., Zingaretti, M. C., Boiani, R., De Matteis, R., Kahn, B. B., Nisoli, E., Tonello, C., Pisoschi, C., Luchetti, M. M. et al.** (2004). Reversible transdifferentiation of secretory epithelial cells into adipocytes in the mammary gland. *Proc. Natl. Acad. Sci. USA* **101**, 16801-16806.
- Murano, I., Zingaretti, C. M. and Cinti, S.** (2005). The adipose organ of Sv129 mice contains a prevalence of brown adipocytes and shows plasticity after cold exposure. *Adipocytes* **1**, 121-130.
- Murano, I., Barbatelli, G., Parisani, V., Latini, C., Muzzonigro, G., Castellucci, M. and Cinti, S.** (2008). Dead adipocytes, detected as crown-like structures, are prevalent in visceral fat depots of genetically obese mice. *J. Lipid Res.* **49**, 1562-1568.
- Murano, I., Barbatelli, G., Giordano, A. and Cinti, S.** (2009). Noradrenergic parenchymal nerve fiber branching after cold acclimatization correlates with brown adipocyte density in mouse adipose organ. *J. Anat.* **214**, 171-178.
- Nechad, M.** (1986). Structure and development of brown adipose tissue. In *Brown Adipose Tissue* (ed. P. Trayhurn and D. Nicholls), Baltimore, MD: Arnold.
- Nedergaard, J., Bengtsson, T. and Cannon, B.** (2007). Unexpected evidence for active brown adipose tissue in adult humans. *Am. J. Physiol. Endocrinol. Metab.* **293**, E444-E452.
- Oberkofler, H., Dallinger, G., Liu, Y. M., Hell, E., Krempler, F. and Patsch, W.** (1997). Uncoupling protein gene: quantification of expression levels in adipose tissues of obese and non-obese humans. *J. Lipid Res.* **38**, 2125-2133.
- Patwari, P., Emmons, V., Schadt, E. E., Chutkow, W. A., Lee, S., Marsili, A., Zhang, Y., Dobrin, R., Cohen, D. E., Larsen, P. R. et al.** (2011). The arrestin domain-containing 3 protein regulates body mass and energy expenditure. *Cell Metab.* **14**, 671-683.
- Petrovic, N., Walden, T. B., Shabalina, I. G., Timmons, J. A., Cannon, B. and Nedergaard, J.** (2010). Chronic peroxisome proliferator-activated receptor gamma (PPARgamma) activation of epididymally derived white adipocyte cultures reveals a population of thermogenically competent, UCP1-containing adipocytes molecularly distinct from classic brown adipocytes. *J. Biol. Chem.* **285**, 7153-7164.
- Ricquier, D.** (2005). Respiration uncoupling and metabolism in the control of energy expenditure. *Proc. Nutr. Soc.* **64**, 47-52.
- Saito, M., Okamatsu-Ogura, Y., Matsushita, M., Watanabe, K., Yoneshiro, T., Nio-Kobayashi, J., Iwanaga, T., Miyagawa, M., Kameya, T., Nakada, K. et al.** (2009). High incidence of metabolically active brown adipose tissue in healthy adult humans: effects of cold exposure and adiposity. *Diabetes* **58**, 1526-1531.
- Seale, P., Kajimura, S., Yang, W., Chin, S., Rohas, L. M., Uldry, M., Tavernier, G., Langin, D. and Spiegelman, B. M.** (2007). Transcriptional control of brown fat determination by PRDM16. *Cell Metab.* **6**, 38-54.
- Seale, P., Bjork, B., Yang, W., Kajimura, S., Chin, S., Kuang, S., Scimè, A., Devarakonda, S., Conroe, H. M., Erdjument-Bromage, H. et al.** (2008). PRDM16 controls a brown fat/skeletal muscle switch. *Nature* **454**, 961-967.
- Seale, P., Conroe, H. M., Estall, J., Kajimura, S., Frontini, A., Ishibashi, J., Cohen, P., Cinti, S. and Spiegelman, B. M.** (2011). Prdm16 determines the thermogenic program of subcutaneous white adipose tissue in mice. *J. Clin. Invest.* **121**, 96-105.
- Strissel, K. J., Stancheva, Z., Miyoshi, H., Perfield, J. W., 2nd, DeFuria, J., Jick, Z., Greenberg, A. S. and Obin, M. S.** (2007). Adipocyte death, adipose tissue remodeling, and obesity complications. *Diabetes* **56**, 2910-2918.
- Sun, L., Xie, H., Mori, M. A., Alexander, R., Yuan, B., Hattangadi, S. M., Liu, Q., Kahn, C. R. and Lodish, H. F.** (2011). Mir193b-365 is essential for brown fat differentiation. *Nat. Cell Biol.* **13**, 958-965.
- Timmons, J. A., Wennmalm, K., Larsson, O., Walden, T. B., Lassmann, T., Petrovic, N., Hamilton, D. L., Gimeno, R. E., Wahlestedt, C., Baar, K. et al.** (2007). Myogenic gene expression signature establishes that brown and white adipocytes originate from distinct cell lineages. *Proc. Natl. Acad. Sci. USA* **104**, 4401-4406.
- Toseland, C. D., Campbell, S., Francis, I., Bugelski, P. J. and Mehdi, N.** (2001). Comparison of adipose tissue changes following administration of rosiglitazone in the dog and rat. *Diabetes Obes. Metab.* **3**, 163-170.
- Tran, K. V., Gealekman, O., Frontini, A., Zingaretti, M. C., Morrioni, M., Giordano, A., Smorlesi, A., Perugini, J., De Matteis, R., Sbarbati, A. et al.** (2012). The vascular endothelium of the adipose tissue gives rise to both white and brown fat cells. *Cell Metab.* **15**, 222-229.
- Tseng, Y. H., Kokkotou, E., Schulz, T. O., Huang, T. L., Winnay, J. N., Taniguchi, C. M., Tran, T. T., Suzuki, R., Espinoza, D. O., Yamamoto, Y. et al.** (2008). New role of bone morphogenetic protein 7 in brown adipogenesis and energy expenditure. *Nature* **454**, 1000-1004.
- Tsukiyama-Kohara, K., Poulin, F., Kohara, M., DeMaria, C. T., Cheng, A., Wu, Z., Gingras, A. C., Katsume, A., Elchebly, M., Spiegelman, B. M. et al.** (2001). Adipose

- tissue reduction in mice lacking the translational inhibitor 4E-BP1. *Nat. Med.* **7**, 1128-1132.
- van Marken Lichtenbelt, W. D., Vanhommerig, J. W., Smulders, N. M., Drossaerts, J. M., Kemerink, G. J., Bouvy, N. D., Schrauwen, P. and Teule, G. J. (2009). Cold-activated brown adipose tissue in healthy men. *N. Engl. J. Med.* **360**, 1500-1508.
- Vegiopoulos, A., Müller-Decker, K., Strzoda, D., Schmitt, I., Chichelnitskiy, E., Ostertag, A., Berriel Diaz, M., Rozman, J., Hrade de Angelis, M., Nüsing, R. M. et al. (2010). Cyclooxygenase-2 controls energy homeostasis in mice by de novo recruitment of brown adipocytes. *Science* **328**, 1158-1161.
- Virtanen, K. A., Lidell, M. E., Orava, J., Heglind, M., Westergren, R., Niemi, T., Taittonen, M., Laine, J., Savisto, N. J., Enerbäck, S. et al. (2009). Functional brown adipose tissue in healthy adults. *N. Engl. J. Med.* **360**, 1518-1525.
- Virtue, S. and Vidal-Puig, A. (2010). Adipose tissue expandability, lipotoxicity and the Metabolic Syndrome – an allostatic perspective. *Biochim. Biophys. Acta* **1801**, 338-349.
- Vitali, A., Murano, I., Zingaretti, M. C., Frontini, A., Ricquier, D. and Cinti, S. (2012). The adipose organ of obesity-prone C57BL/6J mice is composed of mixed white and brown adipocytes. *J. Lipid Res.* **53**, 619-629.
- Waldén, T. B., Hansen, I. R., Timmons, J. A., Cannon, B. and Nedergaard, J. (2012). Recruited vs. nonrecruited molecular signatures of brown, "brite," and white adipose tissues. *Am. J. Physiol. Endocrinol. Metab.* **302**, E19-E31.
- Weisberg, S. P., McCann, D., Desai, M., Rosenbaum, M., Leibel, R. L. and Ferrante, A. W., Jr (2003). Obesity is associated with macrophage accumulation in adipose tissue. *J. Clin. Invest.* **112**, 1796-1808.
- Wood, I. S., de Heredia, F. P., Wang, B. and Trayhurn, P. (2009). Cellular hypoxia and adipose tissue dysfunction in obesity. *Proc. Nutr. Soc.* **68**, 370-377.
- Xu, H., Barnes, G. T., Yang, Q., Tan, G., Yang, D., Chou, C. J., Sole, J., Nichols, A., Ross, J. S., Tartaglia, L. A. et al. (2003). Chronic inflammation in fat plays a crucial role in the development of obesity-related insulin resistance. *J. Clin. Invest.* **112**, 1821-1830.
- Yadav, H., Quijano, C., Kamaraju, A. K., Gavrilova, O., Malek, R., Chen, W., Zerfas, P., Zhigang, D., Wright, E. C., Stuelten, C. et al. (2011). Protection from obesity and diabetes by blockade of TGF- β /Smad3 signaling. *Cell Metab.* **14**, 67-79.
- Zingaretti, M. C., Crosta, F., Vitali, A., Guerrieri, M., Frontini, A., Cannon, B., Nedergaard, J. and Cinti, S. (2009). The presence of UCP1 demonstrates that metabolically active adipose tissue in the neck of adult humans truly represents brown adipose tissue. *FASEB J.* **23**, 3113-3120.

Forthcoming DMM articles

For articles published online ahead of print see <http://dmm.biologists.org/content/early/recent>

Sign up for email alerts (eToC) at <http://dmm.biologists.org/cgi/alerts/etoc>

Research Articles

- **Myotubular myopathy and the neuromuscular junction: a novel therapeutic approach from mouse models.** James J. Dowling, Romain Joubert, Sean E. Low, Ashley N. Durban, Nadia Messaddeq, Xingli Li, Ashley N. Dulin-Smith, Andrew D. Snyder, Morgan L. Marshall, Jordan T. Marshall, Alan H. Beggs, Anna Buj-Bello and Christopher R. Pierson
- **Interleukin-1 receptor antagonist is beneficial after subarachnoid haemorrhage in rat by blocking haem-driven inflammatory pathology.** Andrew D. Greenhalgh, David Brough, Emily M. Robinson, Sylvie Girard, Nancy J. Rothwell and Stuart M. Allan
- **Initiation of prostate cancer in mice by *Tp53*^{R270H}: evidence for an alternative molecular progression.** Ruth L. Vinall, Jane Q. Chen, Neil E. Hubbard, Shola S. Sulaimon, Michael M. Shen, Ralph W. DeVere White and Alexander D. Borowsky
- **Sertoli-cell-specific knockout of connexin 43 leads to multiple alterations in testicular gene expression in prepubertal mice.** Sarah Giese, Hamid Hossain, Melanie Markmann, Trinad Chakraborty, Svetlin Tchatalbachev, Florian Guillou, Martin Bergmann, Klaus Failing, Karola Weider and Ralph Brehm
- **Zebrafish homologs of genes within 16p11.2, a genomic region associated with brain disorders, are active during brain development, and include two deletion dosage sensor genes.** Alicia Blaker-Lee, Sunny Gupta, Jasmine M. McCammon, Gianluca De Rienzo and Hazel Sive
- **Neonatal diethylstilbestrol exposure alters the metabolic profile of uterine epithelial cells.** Yan Yin, Congxing Lin, G. Michael Veith, Hong Chen, Maulik Dhandha and Liang Ma
- **Zebrafish larvae exposed to ginkgotoxin exhibit seizure-like behavior that is relieved by pyridoxal-5'-phosphate, GABA and anti-epileptic drugs.** Gang-Hui Lee, Shian-Ying Sung, Wen-Ni Chang, Tseng-Ting Kao, Hung-Chi Du, Tsun-Hsien Hsiao, Martin K. Safo and Tzu-Fun Fu
- **Zebrafish neurofibromatosis type 1 genes have redundant functions in tumorigenesis and embryonic development.** Jimann Shin, Arun Padmanabhan, Eric D. de Groh, Jeong-Soo Lee, Sam Haidar, Suzanne Dahlberg, Feng Guo, Shuning He, Marc A. Wolman, Michael Granato, Nathan D. Lawson, Scot A. Wolfe, Seok-Hyung Kim, Lilianna Solnica-Krezel, John P. Kanki, Keith L. Ligon, Jonathan A. Epstein and A. Thomas Look
- **Mediators of a long-term movement abnormality in a *Drosophila melanogaster* model of classic galactosemia.** Emily L. Ryan, Brian DuBoff, Mel B. Feany and Judith L. Fridovich-Keil

Research Reports

- **Tumorigenic fragments of APC cause dominant defects in directional cell migration in multiple model systems.** Scott A. Nelson, Zhouyu Li, Ian P. Newton, David Fraser, Rachel E. Milne, David M. A. Martin, David Schiffmann, Xuesong Yang, Dirk Dormann, Cornelis J. Weijer, Paul L. Appleton and Inke S. Näthke
- **The cystic-fibrosis-associated $\Delta F508$ mutation confers post-transcriptional destabilization on the *C. elegans* ABC transporter PGP-3.** Liping He, Jennifer Skirkanich, Lorenza Moronetti, Rosemary Lewis and Todd Lamitina
- **Reduced bone morphogenetic protein receptor type 1A signaling in neural-crest-derived cells causes facial dysmorphism.** Hiromitsu Saito, Ken-ichi Yamamura and Noboru Suzuki