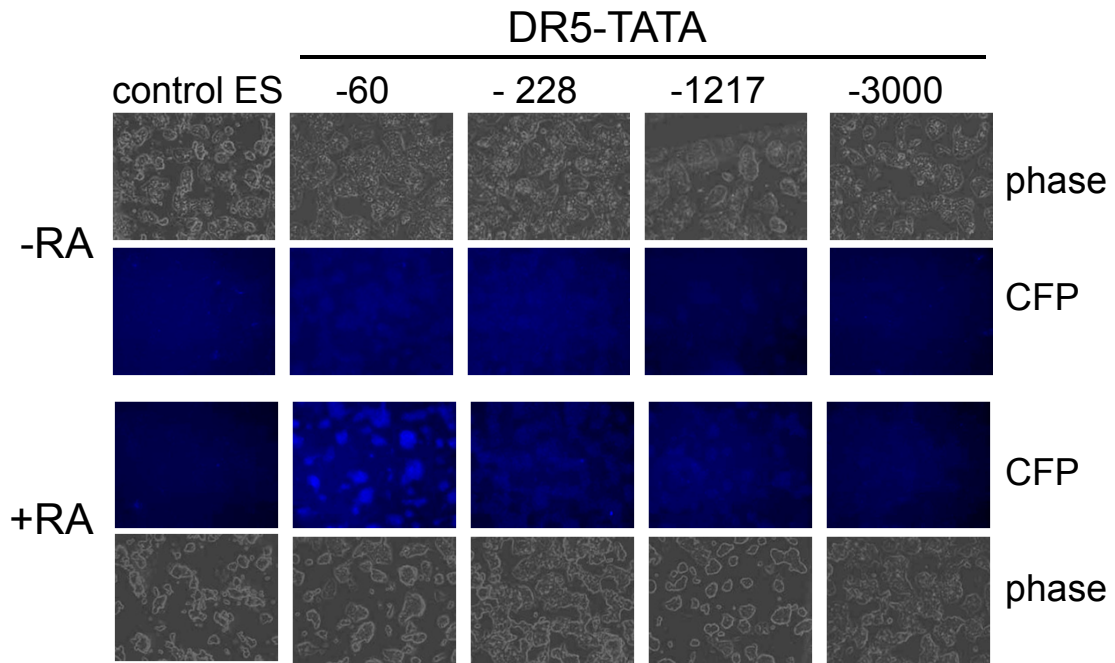
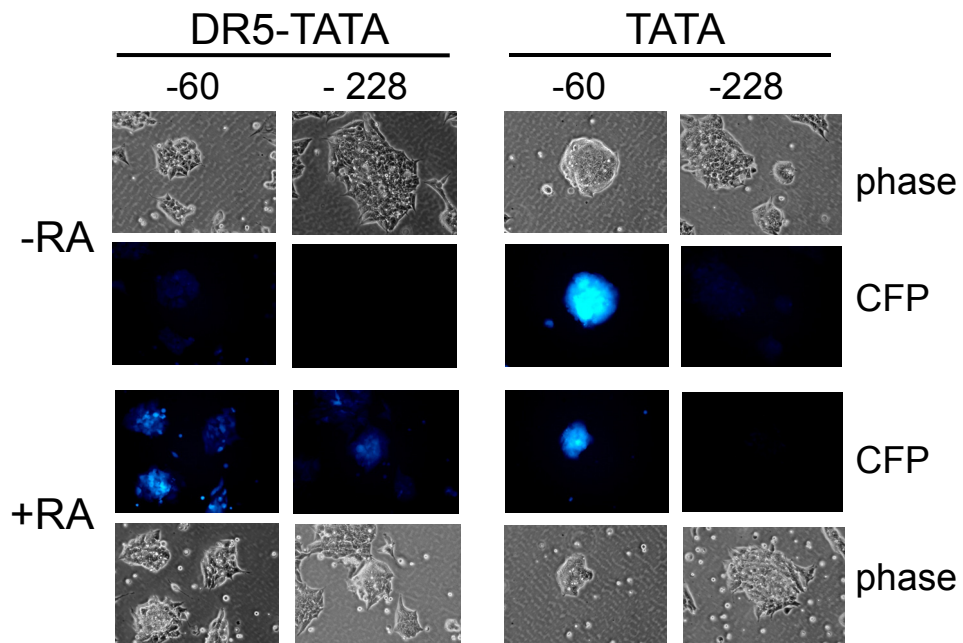


# Serup et al. Supplemental Figure 1

## A. Assessing CFP signals after 4.5 hr, 10 $\mu$ M RA

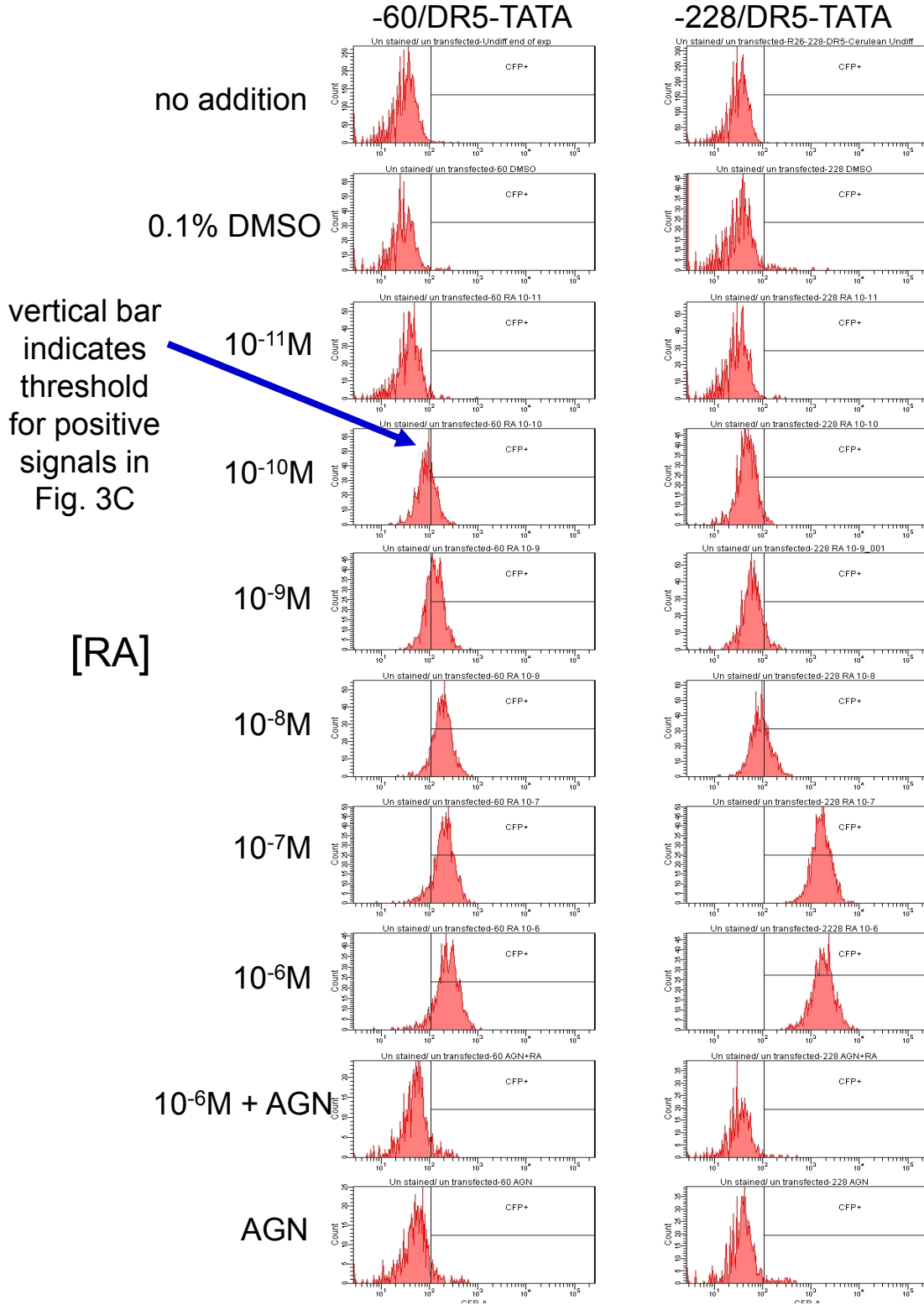


## B. Comparing DR5-TATA to TATA-alone constructs 24 hr, 1 $\mu$ M RA



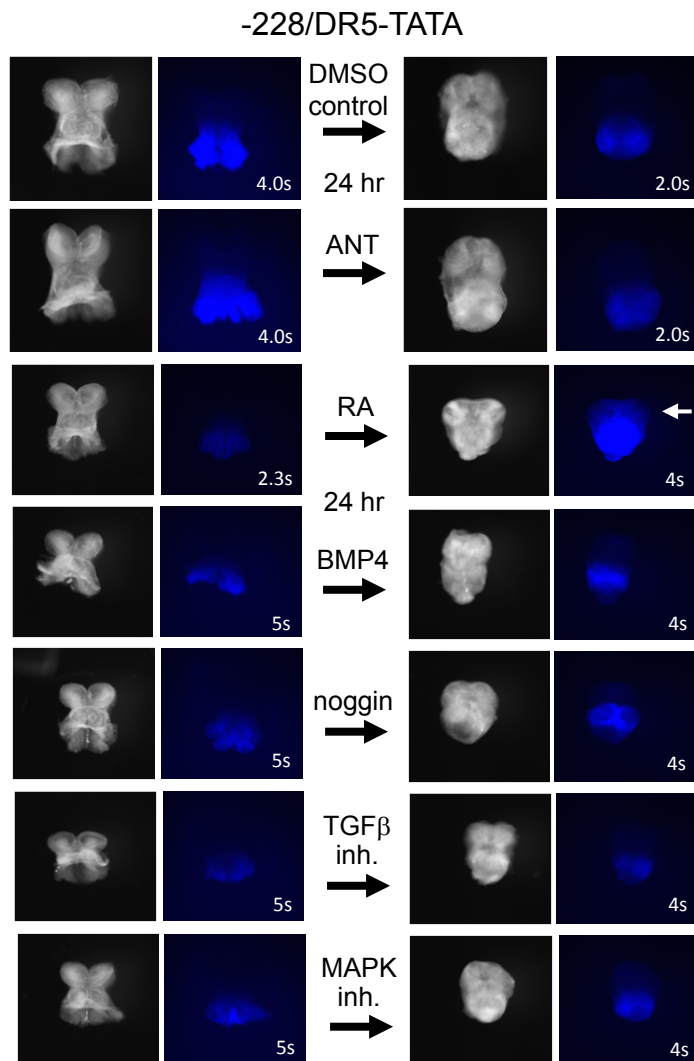
# Serup et al. Supplemental Figure 2

## FACS of ES sentinel lines



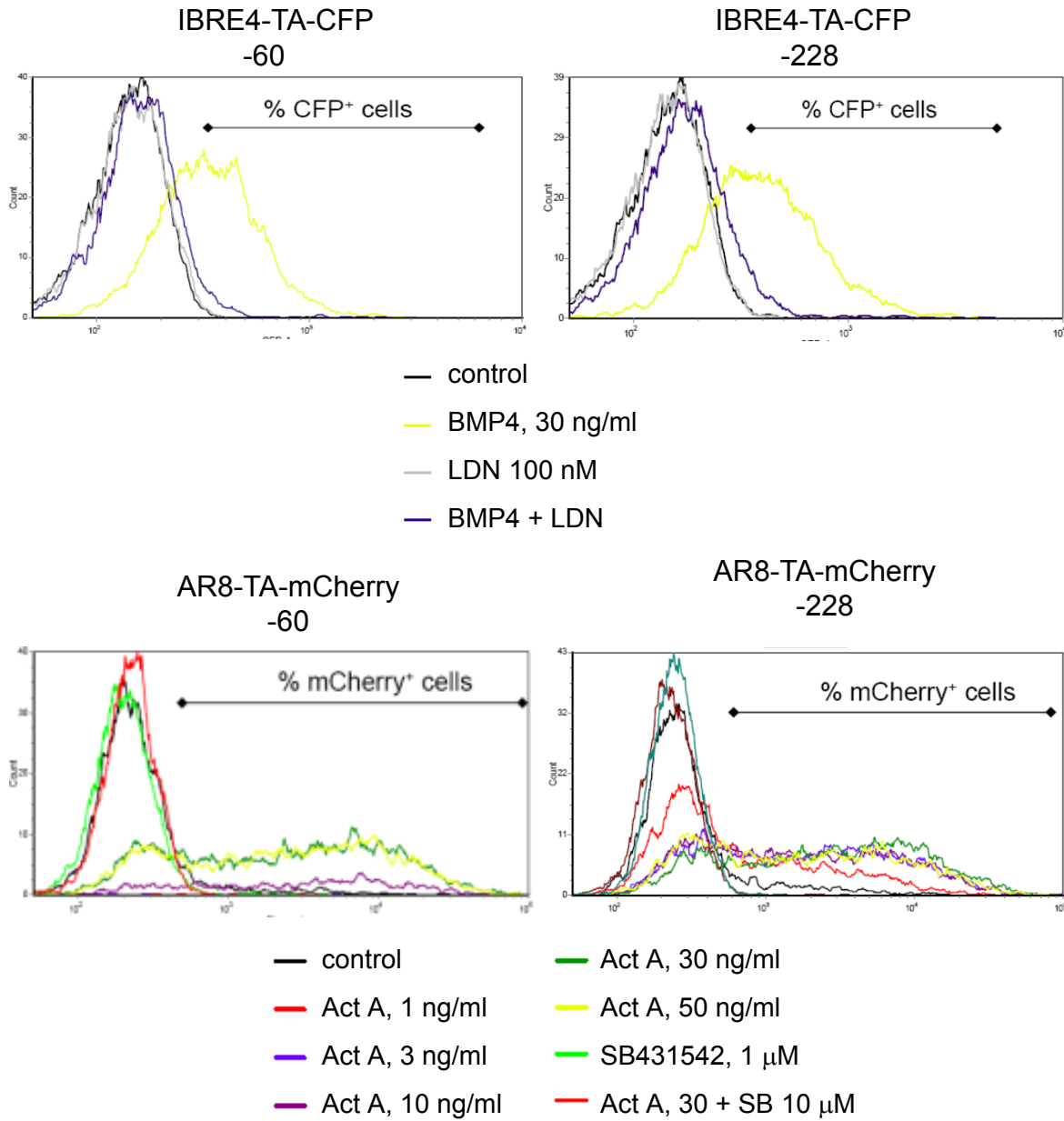
### Serup et al. Supplemental Figure 3

E8.5 (6-8S) half-embryo explants tested for specificity of anterior extension of fluorescence in response to different agents. Such was only seen with RA treatment (white arrow).



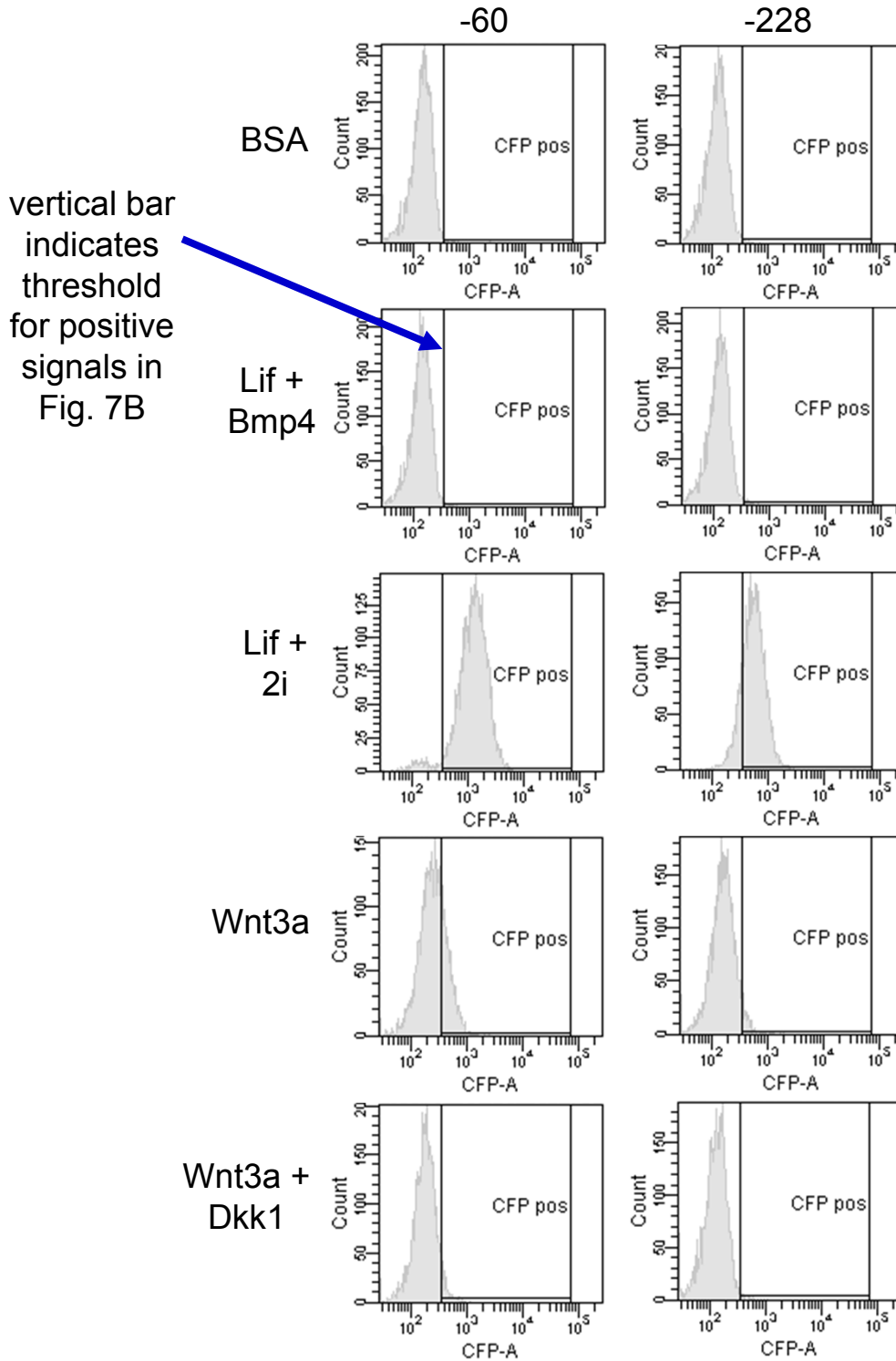
## Serup et al. Supplemental Figure 4

FACS of BMP and Activin A sentinel ES lines  
in response to agonists and antagonists



# Serup et al. Supplemental Figure 5

## FACS analysis of Wnt sentinels: SuTOP-TA-CFP



# Serup et al. Supplemental Figure 6

## FACS analysis of Notch sentinels: 12XCSL-TA-mOrange

