

Supplementary Figure S5. Localization of the peptides identified by mass spectrometry along the protein sequences.

The position and length of the peptides are underlined. The regions matching peptides are highlighted. Grey highlight: regions matching at least one peptide, black highlight: region matching a single peptide, specific for one isotype. A. Localization of the peptides along the PtCenBP1p sequence. A same peptide can match several PtCenBP1p internal repeats, designated rP1 to rP6, because of their high homology. B. Localization of the peptides along the PtCenBP2p and PtCenBP3p sequences. C. Localization of the peptides along the proteins of the ICL1a sub-family. D. Localization of the peptides along the proteins of the ICL1e sub-family. E. Localization of the peptides along the proteins of the ICL3a and ICL3b sub-families. F. Localization of the peptides along the proteins of the ICL5 sub-family. G. Localization of the peptides along the proteins of the ICL7 sub-family. H. Localization of the peptides along the proteins of the ICL8 sub-family. I. Localization of the peptides along the proteins of the ICL9 sub-family. J. Localization of the peptides along the proteins of the ICL10 sub-family. K. Localization of the peptides along the proteins of ICL11 sub-family.

A. Localization of the peptides along the PtCenBP1p sequence.

Nterm 1 MPPGQLQKNKQQQKNVLTTPQKLELLQENRKLSSHIFNMGNLNGQHNLHRAMLRMRRAMIE

Nterm 61 KKIDVSKISKIKGKIVSQLLRYESHTSLHEAFLRWKVRADPEIVKKAVDQILLNSRLNE

Nterm 121 FNAFHKLKNLLGQKDLQKKMNAKKRKNMCLMNLALFLQKKEFQLKTAAVAALKPKNQDSD

Nterm 181 KMLGLLLWSISSKHRERYLREKFNWWRLYSKVKSDKLQKQLKALERLGDEYNMRNDRDR

Nterm 241 QRLKEVQNISNYQAFQKWRGDLNMFRLKKKFFSVLLKTTFGRLQRCYTRWVDLPDKREN

Nterm 301 DMKKQGMLLITKLTNKADQNKRLVWNSFKAIDDDAKNKKTKVIRELIEVTFNQSYTAFYK

Nterm 361 WANYNTYAKLTETNLRKIKALQASANVTQQLVKFEETFKLFGLSKKAEICSFLNKLILKIQ

Nterm 421 QRQKIDAMRQIENVSMQKKMQEKLDNVNKQEIISRLGDTANKTEKGLLRQVLRKFALLRE

Nterm 481 QQEIKNKYFVRIISTTSGMAMDAFRRWKQLPDAEQQMLQNVSKFQLRLQFLFKQRVKQS

Nterm 541 FDPLKEVYYQGIQSKRLCICKQMLVKQLSAPQRFLRQWQSMNKIYKSVIACQKTNNFFDSL

Nterm 601 QDVLKNNIKAFLYTRKDAEVKEKCLVKLMSSFTNNLMIAFLKWKNYNKQQKISENLGDEK

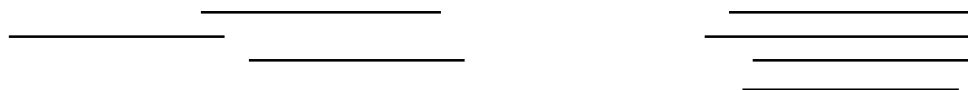
Nterm 661 KKYMLLNLRQRFIKNDNLNRLRRLRLFYNEQQVNQLIKKIHLRVLQQTQIGQVELSFQKWK

Nterm 721 SLPGDDALKNQAKVSKFAISLGKIAYRFVVKLNSWDQLENNLLDGQAKKFCINKIIAITQ

Nterm 781 SDLKKAFLWLHRKAWEMKMFDFKFSQLNVTLNDQIVKQKLIQWINAGSKVKFFALTEVLR

Nterm 841 FNQNAIEHNLKRKAMVI

rP1 851 RNTISQVWLSFNRWKQLPEENNDLKVQATKFEKSLSKFVFHILKKHSWNPLQEVYDDGL
rP2 1279 RTQIGAVWDTFNKWKNLPEANP-DDLIKASRFETQLNKFTLHIWRKRTWNPLQEVYDDAQ
rp3 1706 RTQIGAVWDTFNKWKNLPEANA-DDLIKASRFETQLNKFTLHIWRKRTWNPLQEVYDDAQ
rP4 2133 RTQIGAVWDTFNKWKNLPEANP-DDLIKASRFETQLNKFTLHIWRKRTWNPLQEVYDDAQ
rP5 2560 RTQIGAVWDTFNKWKNLPEANP-DDLIKASRFETQLNKFTLHIWRKRTWNPLQEVYDDAQ
rP6 2987 RTQIGAVWDTFNKWKNLPEANP-DDLIKASRFETQLNKFTLHIWRKRTWNPLQEVYDDAQ



rP1 911 AIKKRAVLLMIKTQESEQQRALDQWNKNVSLIREVERCKVVISLFGLLGSHIKNNIAPLK
rP2 1339 ALKKRAIILMIKTQESEQQRALDQWNKNVGLMKEVERCKCVIGLFGFIGVHIKNNIAPLK
rp3 1766 ALKKRAIILMIKTQESEQQRALDQWNKNVGLMKEVERCKCVIGLFGFIGVHIKNNIAPLK
rP4 2193 ALKKRAIILMIKTQESEQQRALDQWNKNVGLMKEVERCKCVIGLFGFIGVHIKNNIAPLK
rP5 2620 ALKKRAIILMIKTQESEQQRALDQWNKNVGLMKEVERCKCVIGLFGFIGVHIKNNIAPLK
rP6 3047 ALKKRAIILMIKTQESEQQRALDQWNKNVGLMKEVERCKCVIGLFGFIGVHIKNNIAPLK



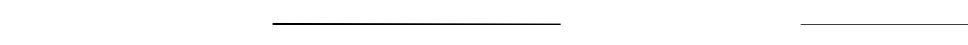
rP1 971 PDEESQKKEKALLRLIGNFDSNLRYFFMKWYNDGKLEKLQGAMTDEKKKLLLEAINNFSK
rP2 1399 PDEESQKKEKALLRLIGNFDSNLRYFFMKWYNDGKLEKLQGAMTDEKKKLLLEAINNFSK
rp3 1826 PDEESQKKEKALLRLIGNFDSNLRYFFMKWYNDGKLEKLQGAMTDEKKKLLLEAINNFSK
rP4 2253 PDEESQKKEKALLRLIGNFDSNLRYFFMKWYNDGKLEKLQGAMTDEKKKLLLEAINNFSK
rP5 2680 PDEESQKKEKALLRLIGNFDSNLRYFFMKWYNDGKLEKLQGAMTDEKKKLLLEAINNFSK
rP6 3107 PDEESQKKEKALLRLIGNFDSNLRYFFMKWYNDGKLEKLQGAMTDEKKKLLLEAINNFSK



rP1 1031 NNDFARLRAILAKFRRNSSITAVQDRFFAKLFATQFGGAIKAFQKWKNLPEPVNTEQLKN
rP2 1459 NNDFARLRAILAKFRRNSSITAVQDRFFAKLFATQFGGAIKAFQKWKNLPEPVNTEQLKN
rp3 1886 NNDFARLRAILAKFRRNSSITAVQDRFFAKLFATQFGGAIKAFQKWKNLPEPVNTEQLKN
rP4 2313 NNDFARLRAILAKFRRNSSITAVQDRFFAKLFATQFGGAIKAFQKWKNLPEPVNTEQLKN
rP5 2740 NNDFARLRAILAKFRRNSSITAVQDRFFAKLFATQFGGAIKAFQKWKNLPEPVNTEQLKN
rP6 3167 NNDFARLRAILAKFRRNSSITAVQDRFFAKLFATQFGGAIKAFQKWK-NPEPVNTEQMKN



rP1 1091 ARKFERTLDILFRSHLKVSFDPLKEDYMDALNIKRMCLRKLFEKSMSAHKRLFLLWAQQN
rP2 1519 ARKFERTLDILFRSHLKVSFDPLKEDYMDALNIKRMCLRKLFEKSMSAHKRLFLLWAQQN



rp3 1946 ARKFERTLDILFRSHLKVSFDPLKEDYMDALNIKRMCLRKLFEKSMSAHKRLFLLWAQQN
rP4 2373 ARKFERTLDILFRSHLKVSFDPLKEDYMDALNIKRMCLRKLFEKSMSAHKRLFLLWAQQN
rP5 2800 ARKFERTLDILFRSHLKVSFDPLKEDYMDALNIKRMCLRKLFEKSMSAHKRLFLLWAQQN
rP6 3227 ARKFERTLDLLFRGRVKASFEPLKDVYQEGNSK~~LY~~CLRKLMTLAMGQNKRLFLYWRDIN

rP1 1151 RQAKQIEVCRLTTALFVGLAQIVTANVQPIMQNPREAQAKEKALHLIFQGQAENLSRAFF
rP2 1579 RQAKQIEVCRLTTALFVGLAQIVTANVQPIMQNPREAQAKEKALHLIFQGQTENLLRAFF
rp3 2006 RQAKQIEVCRLTTALFVGLAQIVTANVQPIMQNPREAQAKEKALHLIFQGQTENLLRAFF
rP4 2433 RQAKQIEVCRLTTALFVGLAQIVTANVQPIMQNPREAQAKEKALHLIFQGQAENLSRAFF
rP5 2860 RQAKQIEVCRLTTALFVGLAQIVTANVQPIMQNPREAQAKEKALHLIFQGQAENLSRAFF
rP6 3287 RLHKS~~IETC~~Y~~TTNLF~~Q~~T~~L~~AFT~~L~~A~~G~~H~~V~~Q~~S~~I~~FKPN~~K~~Q~~Q~~E~~S~~V~~L~~N~~K~~M~~L~~L~~N~~Y~~N~~---NTL~~R~~W~~A~~F~~V~~

rP1 1211 LWRNRAQQERMNQNFEDAL~~T~~I~~E~~K~~K~~K~~Q~~L~~T~~E~~Q~~L~~V~~Q~~F~~E~~N~~G~~N~~K~~F~~A~~L~~Y~~R~~Q~~I~~L~~A~~K~~F~~S~~L~~A~~H~~K~~K~~E~~K~~L~~V~~
rP2 1639 KWRNWSQQDRMNDNLLNQLQSEQRKELVDRLQGFCHGNKLNLYRLI~~L~~A~~K~~F~~S~~L~~A~~H~~K~~K~~E~~K~~L~~V
rp3 2066 KWRNWSQQDRMNDNLLNQLQSEQRKELVDRLQGFCHGNKLNLYRLI~~L~~A~~K~~F~~S~~L~~A~~H~~K~~K~~E~~K~~L~~V
rP4 2493 LWRNRAQQERMNQNFEDAL~~T~~I~~E~~K~~K~~K~~Q~~L~~T~~E~~Q~~L~~V~~Q~~F~~E~~N~~G~~N~~K~~F~~A~~L~~Y~~R~~Q~~I~~L~~A~~K~~F~~S~~L~~A~~H~~K~~K~~E~~K~~L~~V~~
rP5 2920 LWRNRAQQERMNQNFEDAL~~T~~I~~E~~K~~K~~K~~Q~~L~~T~~E~~Q~~L~~V~~Q~~F~~E~~N~~G~~N~~K~~F~~A~~L~~Y~~R~~Q~~I~~L~~A~~K~~F~~S~~L~~A~~H~~K~~K~~E~~K~~L~~V~~
rP6 3347 HWNNQAKQAKIQS----QLDDEKKKLLLFALHRNLR~~T~~N~~D~~Q~~G~~K~~L~~R~~D~~I~~L~~R~~K~~F~~S~~K~~E~~R~~Q~~K~~Q~~A~~L~~I

rP1 1271 LQINARIL
rP2 1699 LQINARIL
rp3 2126 LQINARIL
rP4 2553 LQINARIL
rP5 2980 LQINARIL
rP6 3407 KKI~~Q~~I~~Q~~L~~L~~

Cterm 3422 VGQIEVSFQKWKALPETKALDQMKASIFEKSLNRFKIH~~MVR~~~~K~~SAYNQLYNIYLDGQAKQK

Cterm 3482 YAINKMLYNCMSAQKKAFLKWKYKVVVEFSKAAEAFDISDKKKLAIQ~~L~~F~~Y~~Q~~H~~KMNQLNVA~~F~~V

Cterm 3542 ~~E~~W~~K~~R~~L~~S~~S~~H~~L~~T~~N~~K~~Q~~E~~T~~A~~Q~~E~~R~~E~~V~~R~~L~~K~~R~~E~~A~~I~~L~~L~~F~~Q~~N~~F~~A~~Q~~I~~R~~L~~R~~I~~Y~~F~~Q~~R~~W~~N~~I~~R~~A~~V~~K~~K~~N~~M~~I~~S~~V~~F~~N

Cterm 3602 AIQKLLCTERMMQDRELIKEALDIWRGPKLQ~~N~~Q~~W~~F~~Q~~R~~V~~A~~E~~M~~I~~A~~K~~N~~T~~R~~I~~T~~P~~Q~~I~~A~~F~~W~~R~~M~~R~~D~~N~~A

Cterm 3662 TTQKAVSLNTLQIVKCKKLINLLKAYDRVRQRAFTNIEHFGRGITDASSFQPSHSSFLQ

Cterm 3722 QTPVRDSQAKSQMESIILKNSQ~~Q~~VALSTLQ~~R~~V~~F~~RRHLKIRFTELVLIASQCQKLGEQMLK

Cterm 3782 SSIQPTQYKFIHKKMATEKLIGVLERNLQ~~L~~KELVFFNSIANQSDPDLLKRMNELIEENS~~R~~

Cterm 3842 ~~L~~R~~D~~Q~~A~~T~~N~~D~~E~~T~~I~~N~~S~~K~~D~~Q~~Q~~I~~S~~E~~Q~~Q~~R~~L~~I~~Q~~D~~L~~N~~T~~R~~L~~D~~R~~M~~R~~G~~Q~~R~~M~~I~~K~~S~~L~~E~~E~~Y~~Q~~D~~H~~L~~V~~E~~D~~G~~F~~F~~A~~I~~E

Cterm 3902 EYKKE*

B) Localisation of the peptides along CenBP2 and CenBP3 sequences.

CenBP3 1 **MLSDSNNRLSTQLSPKLGIIIVSQLIKTQSSLSIQDAFIRWQVRTNPEIVKKA**VDKILLN
CenBP2 1 **MLSDTNNQLSTKLSPKLGIIIVSQLIKTQQNLTIQDAFIRWQVRTNPEIVKQ**AVDKILLN

CenBP3 61 **SKLNQFN**A**FHKLKFL**LG-YQKLLIRMNA**KKKKNLSI**INLALF**VQK**KELQ**LKRQAIESIKP**
CenBP2 61 **SKLNQFN**A**FHKLKFL**LGT**KQPKEARMNAR**KKKKNLS**LI**INLALF**IQK**KELQ**LKRQAIESIKP**

CenBP3 120 **TSQDTNKMLG**LLI**WSSIS**SKYRERYLREKFN**WWKLI**AK**IK**SNKLEKQ**LKALE**RLGDEYNMR
CenBP2 121 **TSQDSNKMLG**LLI**WSSIS**SKYRERYLREKFN**WWKLI**AK**M**SNKLEKQ**LKALE**ILGDEYNMR

CenBP3 180 **NDRLDR**QRLKEAFEIWRGDLLNFRL**KKKFF**AVLLK**TT**FGR**LQ**RCYTRWVDL**PK**KRENDIK
CenBP2 181 **NDRLDR**SRLKEAFEIWRGDLLNFRL**KKKFF**AVLLK**TT**FGR**LQ**RCYTRWVDL**PK**KRENDIK

CenBP3 240 **KQGLLL**INKLGNKVDQNKRLVWNA**FKDI**HDEAKN**KKTK**VIRELIEVTFNQSYTAFYKWAN
CenBP2 241 **KQGLLL**INKLGNKVDQNKRLVWNA**FKDL**HDEAKN**KKTK**VIRELIEVTFNQSYTAFYKWAN

CenBP3 300 **YNTYAKLT**ETNLK**IKS**FQOSANVTHQ**L**VKQ**ET**FKLFNL**SKM**Q**IC**SFLDKI**IL**KL**QQ**RQ
CenBP2 301 **YNTYAKLT**ETNLK**IKS**LQOSANVTHQ**L**VKQ**ET**FKLFNL**SKM**Q**IC**SFLDKI**IL**KL**QQ**KQ

CenBP3 360 **KLDSLR**QIENYCVQKK**MEE**KL**N**INKQDL**IS**RL**KD**TANKTEKGL**LKQ**V**L**KK**FS**LN**RT**TQE
CenBP2 361 **KLDALR**QIENYCVQKK**MEE**KL**NN**INKQDL**I**AR**LK**E**T**ANKTEKGL**LKQ**I**L**RR**FQ**IN**RE**TQE

CenBP3 420 **IKNKYF**GRILLSVNGQLIDAFR**KW**KTLPNP**ND**INNIQKASK**FQ**IK**LQ**MFITNK**R**KQAYDP
CenBP2 421 **IKNKYF**GRILLSVNGQLID**S**FR**KW**KILP**NP**DDINNIQK**V**SK**FQ**M**KL**Q**L**FIVN**KH**KQAYDP

CenBP3 480 **LKYLYY**DALQKKR**FC**IRQLFSVTMSAPQRY**L**KQWQ**N**VAKVYK**SV**VACQKTNNLFYSL**ALI**
CenBP2 481 **LKYLYY**EALQKKR**FC**IRQLFSVTMSAPQRY**I**KQWQ**N**VAKVYK**SV**VACQKTNNLFYSL**AMI**

CenBP3 540 **IQSNLL**TFVQ**N**KKD**VD**IK**EK**CIQKILASQHSN**L**AIAFF**K**W**KS**HN**KQ**E**Q**ILERLGDEK**M**KF
CenBP2 541 **LQSNLL**AF**I**Q**N**KKD**VD**IK**EK**CIQKILASQHSN**L**AIAFF**R**W**KS**Q**N**K**Q**Q**Q**ILERLGDEK**M**KF

CenBP3 600 **LILNL**KKFLE**ND**KKQRLRRALNLF**H**Q**LQ**VA**Q**QIKKINLRLM**Q**TV**V**GQV**SS**FSFQKW**Y**LP
CenBP2 601 **LILNL**KKFLE**ND**KKQRLRRALNLF**N**SN**LQ**LA**Q**QIKKINLRLM**Q**TV**I**GQV**TS**FSFQKW**Y**LP

CenBP3 660 **EDK**VNGSTAKVSK**F**MI**S**LGRVAYR**F**VKVNSW**N**IM**E**DY**LL**DGQAK**K**KYCINK**I**ISVGQSD**L**
CenBP2 661 **EDR**VNGKT**V**KVSK**F**MI**S**LGRVAYR**F**VKVNSW**N**I**E**DD**LL**E**G**QAK**K**KYCINK**I**IFSVGQSD**L**

CenBP3 720 **KTAFL**I**W**HRR**S**WEM**K**MF**D**Q**F**SQ**L**NVTLN**D**E**I**IK**Q**RLINW**I**NSGN**K**V**K**HYALIE**I**L**KRFHQ**
CenBP2 721 **KTAFL**S**W**HRR**S**WEM**K**MF**D**Q**F**SQ**L**NVTLN**D**E**I**IK**Q**RL**V**NW**I**NS**G**Y**K**V**K**HYALIE**I**L**KRFHQ**

CenBP3 780 **NAESHNLRR**KALAI**I**HRNTISQV**W**ISFN**K**WKQ**I**PE**H**DYS**L**TK**V**TK**F**EQ**S**IN**R**FLIR**Q**AK
CenBP2 781 **NAQSYN**LRRKALAI**I**HRNTISQV**W**ISFN**K**WKQ**I**PE**L**DYS**L**AK**V**TK**F**EQ**Q**F**NH**FLIR**Q**TK

CenBP3 840 **KKTWNPLNEIYD**DALAI**K**KRAV**LL**LV**K**T**Q**E**S**E**Q**Q**Q**A**L**S**K**W**N**KNVALIQ**E**VER**C**KSV**I**LL**F**

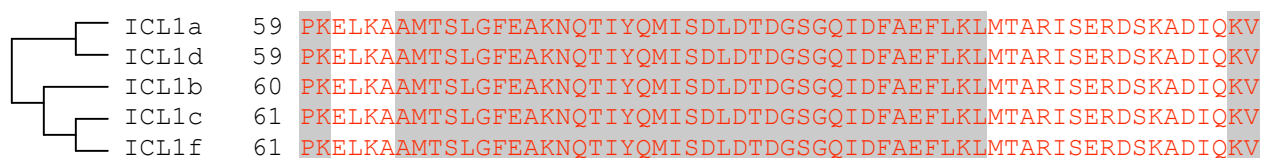
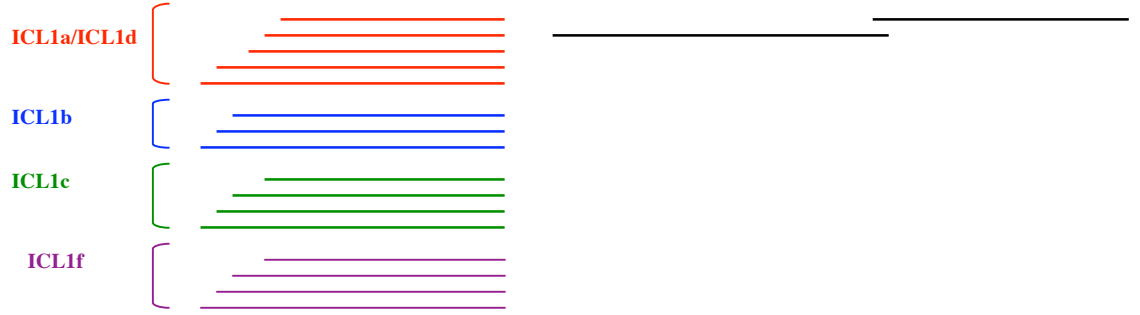
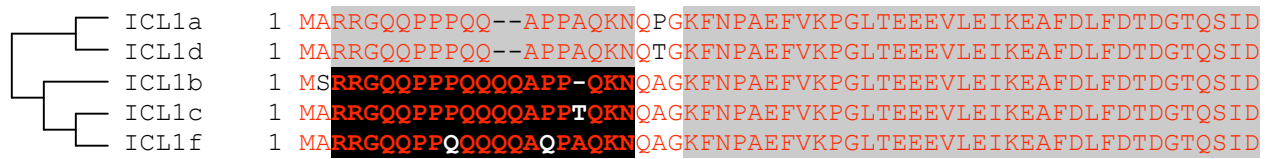
CenBP2 841 KKIWNPLYEIIYDDALAIKKRAVLLLIKTQESEQQKALSNNWNKNVSLIQEVERCKSVILLF
 CenBP3 900 KFGVDQIQCNLQIMQPNQESRLKEKALLKIIGGNYDNIRYFFMRWRNYLKFERLQAIEGE
 CenBP2 901 KFGVDQIQFNLQIMQPNQESRLKEKALLKIIGGNYDNIRYFFMRWTNYLKFERTQAIEGE
 CenBP3 960 KKEFLIRQIGFFYRNNMKSCLRRLALSFKFRNSVLSAVQQKFFSRLFSTKFGGAIVAFQKW
 CenBP2 961 KKEFLIRQIGFFYRNNMKSCLRRLALSFKFRNSVLSAVQQKFFSKLRFSTKFGGAIVAFQKW
 CenBP3 1020 KNLFDIQNYENVKKGRLEKLLLENLYRGRIKLSYDPLKDEYQEAMNKKMHCIRKLIILGM
 CenBP2 1021 KNLPEIQNFENLKKGRLEKILENLYRGRIKLSYDPLKDEYQEAMNKKLHCIRKLIILGM
 CenBP3 1080 GSNKRLFLSWRNTNLLLSIETCKQTTNFFQTLSTLTLSGNVQVIFKTNQLQEKVFEKMLS
 CenBP2 1081 GLNKRLFLQWRNTNLLLSIETCKQTTNFFQTLALTLTLSGNVQVIFKTNQLQEKVFEKMLS
 CenBP3 1140 QYNNLLRWAFIKWNNQAKSDRIASLMDKETRKFLLFALQRNLKHNKIGQLRDILRNFNDR
 CenBP2 1141 KYNNLLRWGFIKWNNQAKSAKIASLMDQEKRKFLLFALQRNLKHNQNGQLRDILRKFNDR
 CenBP3 1200 RNRINLIKKIQLKFLHTFAGQVETSFLKWKQLPDSNLKQASRFEQKLNFSFKIQILRKSS
 CenBP2 1201 RSRQNLIKKIQLKLLHTFAGQVETSFLKWKQLPDPNSLKQASIFEQKLNFSFKLQVLRKSS
 CenBP3 1260 FKYLQNIYQDGQAKQKYAINKLMFNCMSVEKKVFLQWNKVSELQKTEERASKVMGFFGSI
 CenBP2 1261 FKYLQNIYQDGQAKQKFAINKLLFNCMSAEKKAFLQWNVSELQKTEQRASKVFSFFGSI
 CenBP3 1320 NKIQQNHMYFFFEDQIKELKKQEELVRLLEKWEEMFKDSYQKWKQTQAKLDDLASQNRQK
 CenBP2 1321 NKIQQNHMYFFFEDQIKELKKQEELVRLLEKWEEDMFKDSYQKWKQTQAKLDDLASQNRQK
 CenBP3 1380 QKFSIIIEILKDYIQNKKNYNLRLILRKFSNSNKSQKAVNKFLLGISHSSIGQLHNSFQMW
 CenBP2 1381 QKFSIIIEILKDYIQNKKNYNLRLILRKFSNSNQRQKAVNKFLLGISNSSIGQLHNSFQMW
 CenBP3 1440 RRLPEPQKTKQGYIFEKKIFSLFRKQLLQSFDFGLQDIYFQALNKKRRVLLLLVVRTTKSQQ
 CenBP2 1441 RRLPEPQKTKQGYIFEKKLFGFRKQLLQSFDFGLQDLYFQALNKKRRVLLLLVVRTTKSQQ
 CenBP3 1500 QQAVQRWRDALNQMNQQELQNVQENRKLAIQLFYQHKNQNLNVAFIEWRDTIRLHTNKQE
 CenBP2 1501 QQSVQRWRDAINQMNQQELQNVQENRKLAIQLFYQHKNQNLNVAFIEWRDTIRLHTNKQE
 CenBP3 1560 NKTQRDERLKKEAILLFQNYAYVRLRVYFTQWKIRAVKRNMIQICQAIQRMICLNRFQEK
 CenBP2 1561 NKTQKEERLKKEAILLFQNYAYVRLRVYFTQWKIRAVKRNMIQICQAIQRMICLNRFQEK
 CenBP3 1620 AMKKYVMDIWKGQPSKNKWFKRVADIIAKNSKISKQIAYWRMRDN-LNQAAGVGLSTQQII
 CenBP2 1621 AIKKYVMDVWKGQPSKNKWFKRVADIIAKNSRISKQVAYWRMRDNLNQAAGVGLSTQQII
 CenBP3 1679 KCKKLFNNLFKAFDRIKQRAFTLLEHYGKGIPTDTSFQPSQTSFLQQTPIKIKIDTFFKS
 CenBP2 1681 KCKKLFNNLCKAFDRIKQRAFTLLEHYGKGIPTDTSFQPSHSSFLQQT---PIKDAFFKS

CenBP3 1739 DFDSILQKNGQK**M**ALNAISR**V**V**K**V**Y**FKQRFIELMIELGDQ**K**L**R**KV**S**THK**K**KGAEK**L**FAIL
CenBP2 1738 DFDS**I**I**Q**KNGQ**K**LALNAISR**V**FK**G**FL**K**QRFIEFMIELDDQ**K**Q**K**SW**S**TP**Q**KKGAEK**L**FAIL

CenBP3 1799 EQNLK**L**K**K**Q**V**IC**Y**Q**I**SQ**V**IN**I**KN**I**Q**V**NEQ**G**V**L**NQ**I**NE**I**IN**Y**Q**Q**ST**Q**S**S**R**L**ESS**Q**L**K**EQ**Q**
CenBP2 1798 EQNLK**L**K**Q**V**I**C**Y**Q**I**SQ**V**L**Q**EL**I**Q**V**NEQ**G**V**L**NQ**I**NE**I**IN**Y**Q**Q**ST**Q**S**A**S**R**LE**L**S**Q**I**K**EQ**Q**

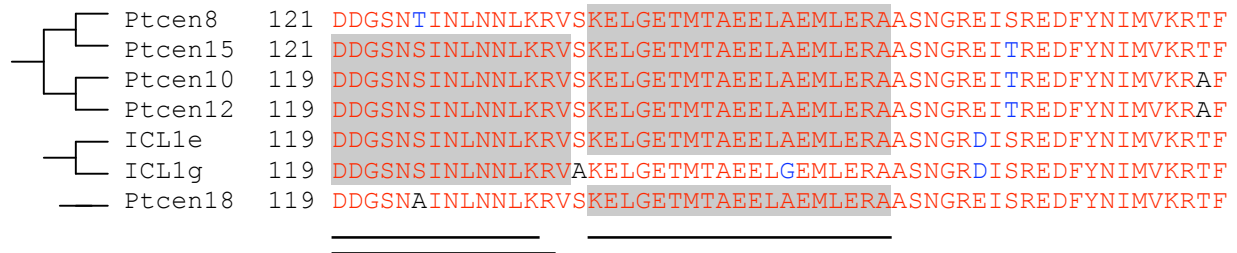
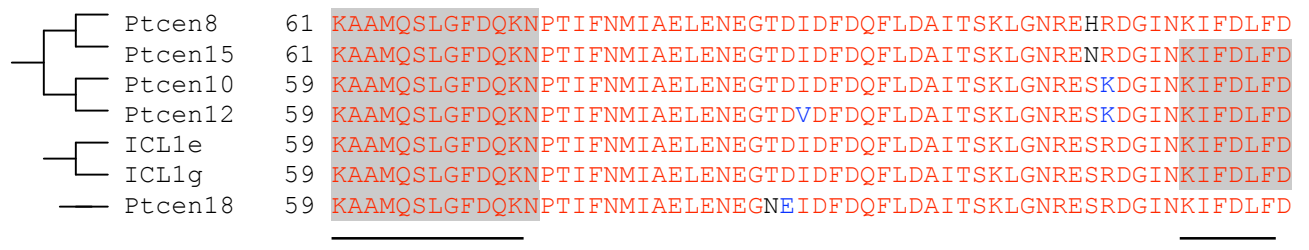
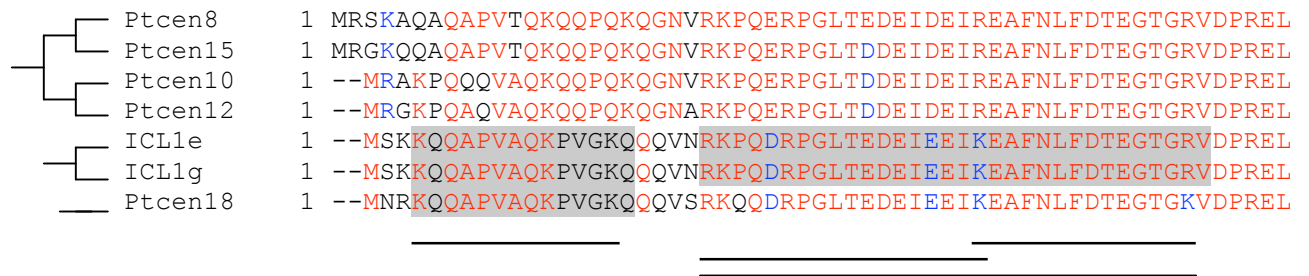
CenBP3 1859 L**K**LNE**K**ER**M**LE**G**W**Q**E**K**L**R**C**V**AIN**R**L**I**KALE**R**CE**D**H**F**VE**D**A**F**V**A**I**S**E**Y**Q**L**K
CenBP2 1858 T**K**LNE**Q**ER**M**IL**D**L**Q**E**K**L**R**C**M**A**I**H**R**L**F**KALE**K**CE**D**H**F**VE**D**A**F**L**G**I**S**E**Y**Q**L**K

C) Localisation of the peptides along the proteins of ICL1a family

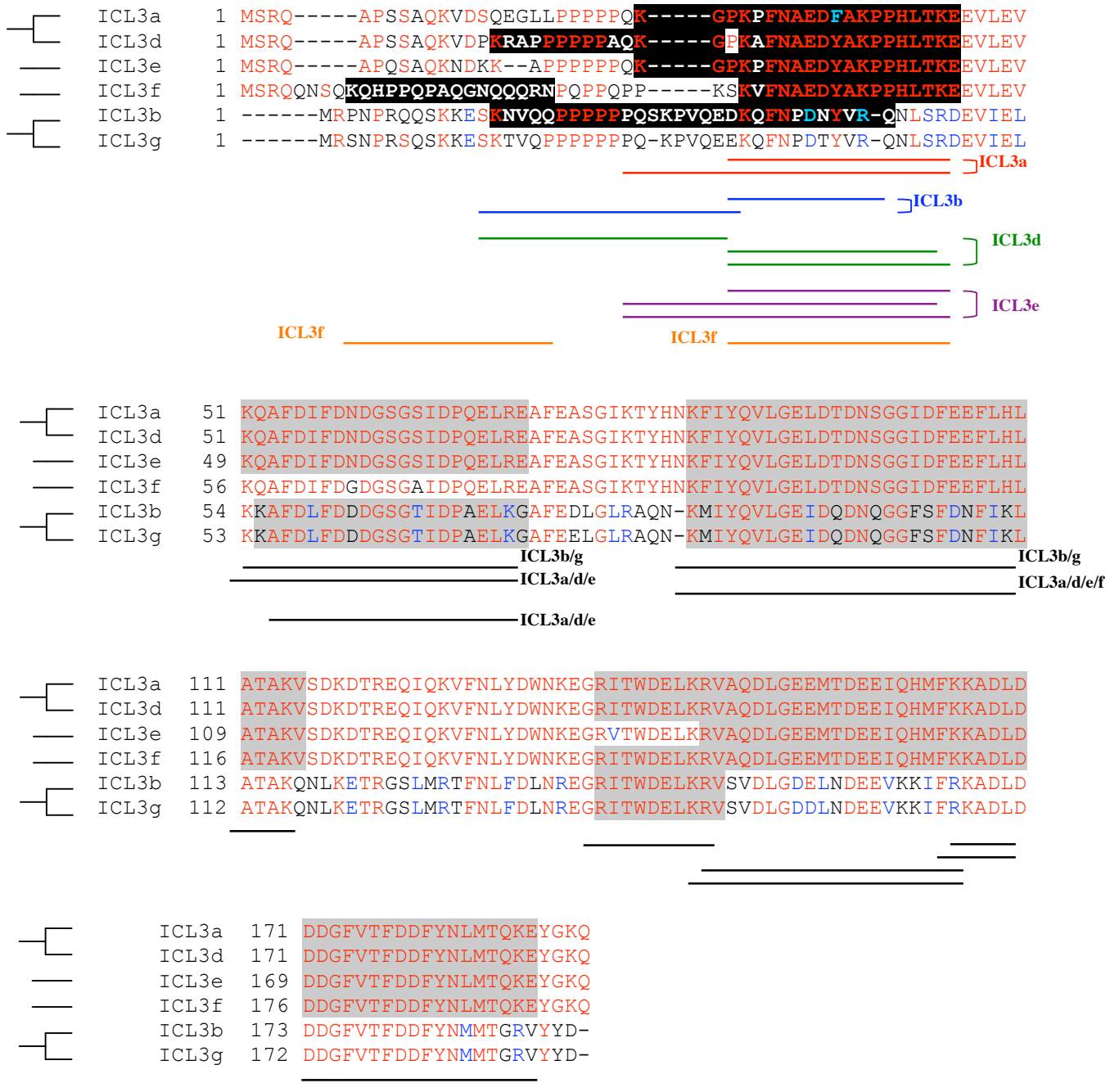


ICL1a 179 TFA
 ICL1d 179 TFA
 ICL1b 180 TFA
 ICL1c 181 TFA
 ICL1f 181 TFA

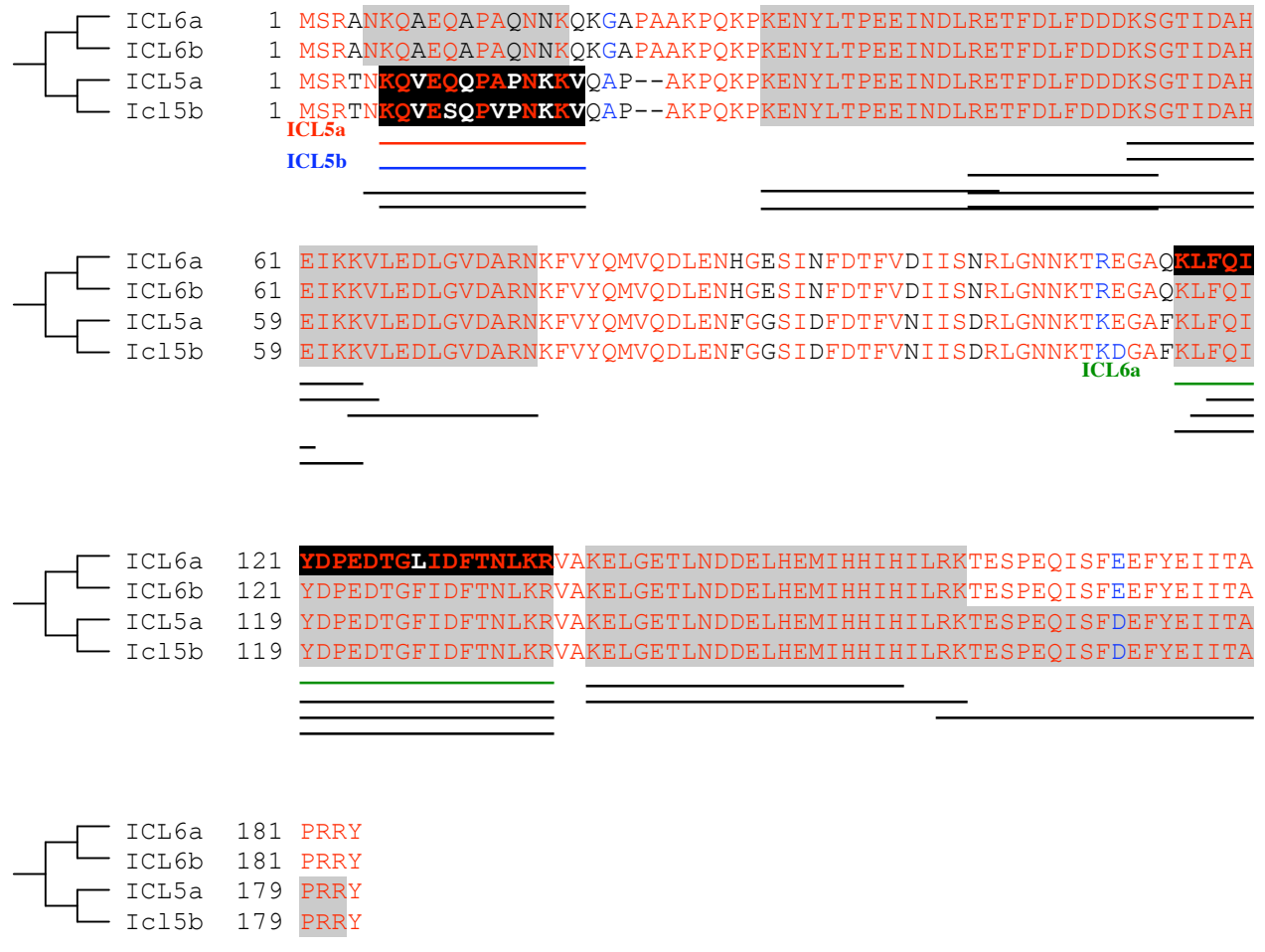
D) Localisation of the peptides along the proteins of ICL1e family.



E) localisation of the peptides along the proteins of ICL3a and ICL3b families.



F) Localisation of the peptides along the proteins of ICL5 family.



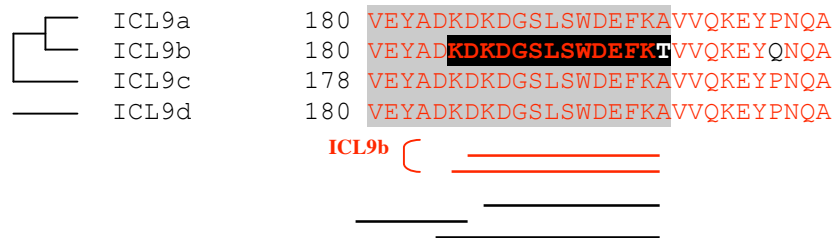
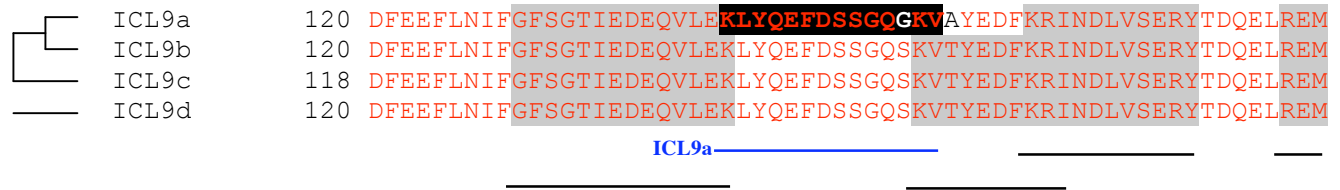
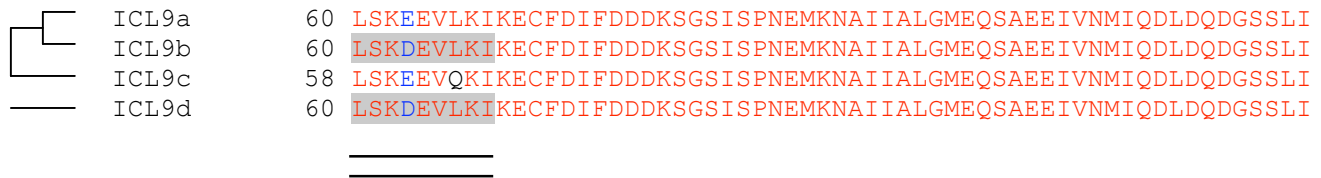
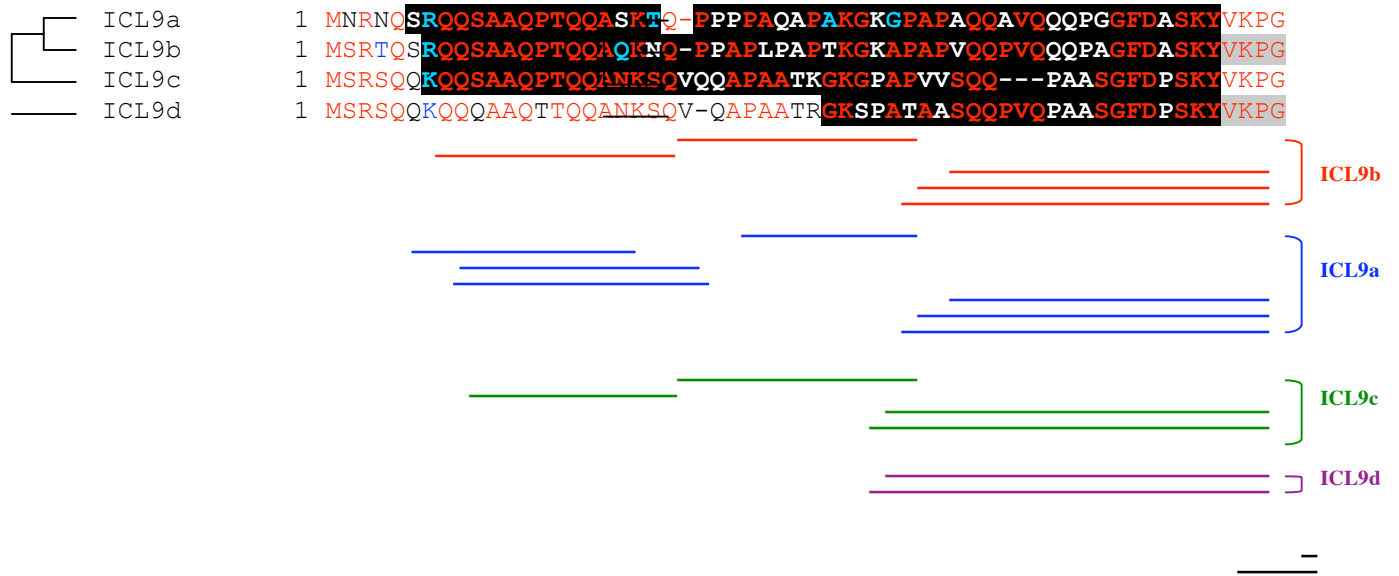
G) Localisation of the peptides along the proteins of ICL7 family.



H) Localisation of the peptides along the proteins of ICL8 family.

ICL8a	1	MSRREQIEKDKQALLAKPWVKNHPIFTYDHIAEFYEMF	ILYAEPRTKKADVRDILVTAKT
ICL8b	1	MSRRDQIEKDKQALLAKPWVKNHPIFTYDHIAEFYEMF	VLYAEPRTKKADVRDILVTAKT
—			
ICL8a	61	LGLTDKFPPIIAHALDDLASSYDDAVDFETFISDLTAKL	GNPFDQKGRVQLFKLIDVDGKG
ICL8b	61	LGLTDKFPPIIAHALDDLASSYDDAVDFETFISDLTAKL	GH PFDQKGRVQLFKLIDVDGKG
ICL8a	121	TLDKSDLHKISEELRFNLTEDDIEEIIHNVAGYEADV	TEEKFEKYLGKRVQRRQVEQEI
ICL8b	121	TLDKSDLHKISEELRFNLTEDDIEEIIHNVAGYEADV	SEKFEKYLGKRVQRRQVEQEI
ICL8a	181	YRNK	
ICL8b	181	YRNK	
—			

D) Localisation of the peptides along the proteins of ICL9 family.



J) Localisation of the peptides along the proteins of ICL10 family.

—┐	ICL10a	1	MNRKKNTTSVPTLPQSKINQSLLVPPPQIMSPNQSYSTYIPPEPKFDPNDYITGSTTKRD
	ICL10b	1	MNRKKNTTSVPTLPQSKVNPQYLAPPPQQLSPNQSYSTFIPPEPKFDPNDYITGSTTKRD
<hr/>			
—┐	ICL10a	61	IILYKEIFDFLDSNNGVIQPMDLRKAFASAGKYQPKKQIIYQMIADFDQDQSGIIEFRE
	ICL10b	61	IILYKEIFDFLDSNNGVIQPMDLRKAFASAGKYQPKKQIIYQMIADFDQDQSGIIEFRE
<hr/>			
—┐	ICL10a	121	FVRMMSMHPGEKDTDEDFENIFYQFDLDYKGYITIDDLREMASECNENLKDEDLENIKA
	ICL10b	121	FVRMMSMNPGEKDTDEDFENIFYQFDIDYKGYISIDDLREMASECNENLKDEDLQNI IQS
<hr/>			
—┐	ICL10a	181	CDPEGNGTIRKQGFIRYMKSLQKKN
	ICL10b	181	CDPEGNGTIRKQAFIRYMKSAQKKR
<hr/>			

K) Localisation of the peptides along the proteins of ICL11 family.

	ICL11a	1	MKNQRK SQSPFRTTQ SIMRDS PNTQLDESSISTNRIPQ NRESTRARMKINQSHNN ALAQQ
	ICL11b	1	MRNQRK SQSPFRTN QSVMRDS PNTQLDESSISTNRV PQNRESTRARMKINQSHNN ALAQQ
	ICL11c	1	MRNQITSH SPFRTTQ SI IRDS PH TQLDES RI S NNRVPQNRES MRARMLINQSHNNIQ NG

	ICL11a	61	GQIRKQIANE RASANGGNPNEFNPKK FVTKDLKESDIIDIKQVFDYDSEQAGILSPNDL
	ICL11b	61	GQIRKQIANERTSAKGGNPNEFNPKKFVTKDLKESDIIDIKQVFDYDSEQAGILSPNDL
	ICL11c	61	QQVRKQIANERTQSKGGNPNEFNPKKF ITK ELKESDIIDIKQVFDYDSEQAGILSPNDL

	ICL11a	121	EQL L SSCGYHPTKETLYE I FSELDEDELGGITFEYFL G ILNQDKSKSERKDTIRRVYRKY
	ICL11b	121	EQL L TSFGYHPTKETLYE I FSELDEDELGGITFEYFL Q ILNQDKSKSERKDTIRRVYRKY
	ICL11c	121	EQL L ISFGYHPSKETLYE I FSELDE E ELGGITF Q YFL A ILNQDK T KSE K KDVIRRVYRKY

	ICL11a	181	DKNNKGFITLQDLRQVVYKDLKEE I DEEVLAE I FKKTD S NQDGKMTFEDFY N VM T KKV Y
	ICL11b	181	DKNNKGF V TLQDLRQVVYKDLKEE I DEEVLAE I FKKTD S NQDGKMTFEDFY N VM T KKV Y
	ICL11c	181	DKSNK G YITLQDLRQVVYKDLKE D IDEEVLAE I F R KT S NQDGKMTFEDFY N V I TKKV Y