

Figure S3

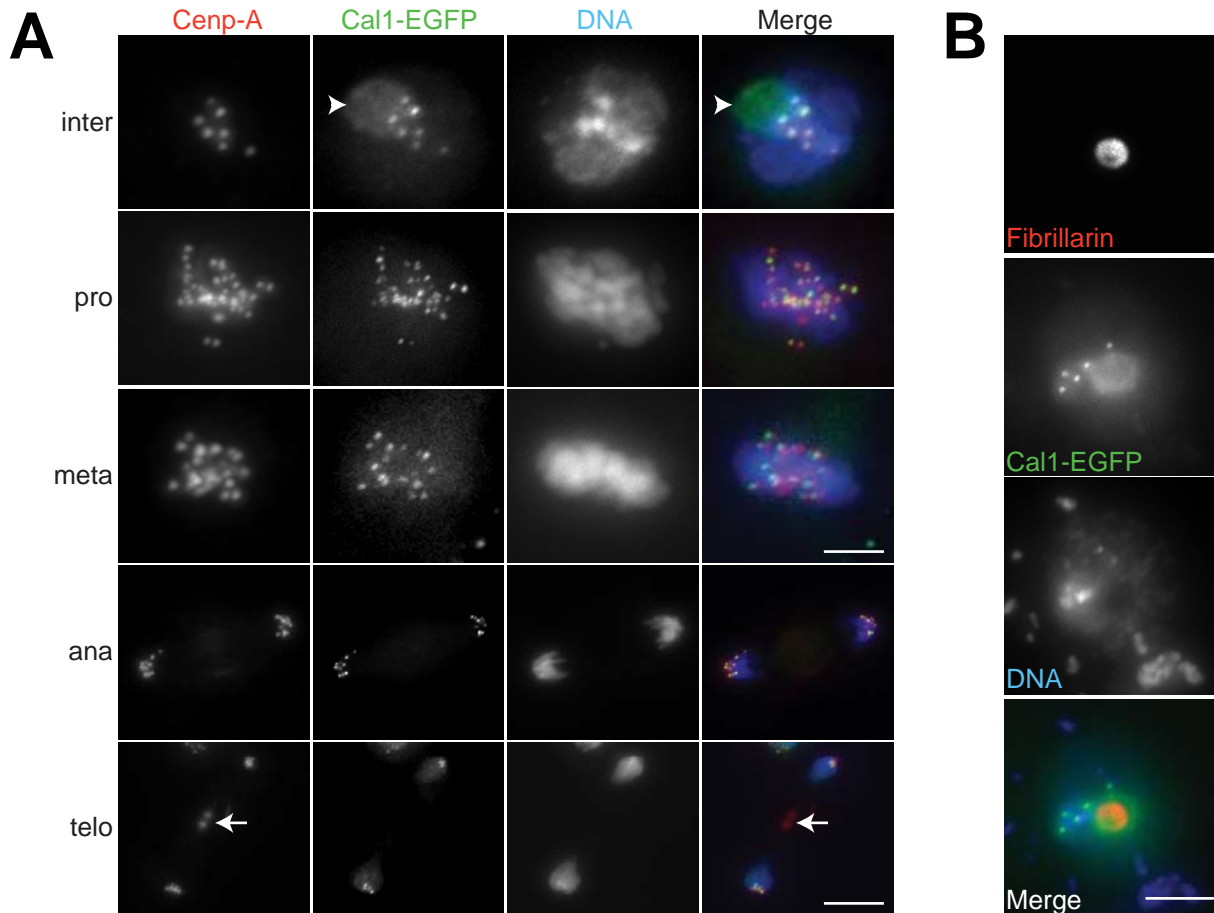


Figure S3. Intracellular localization of Cal1-EGFP

(A) Stably transfected S2R+ cells expressing Cal1-EGFP were double labeled with an antibody against Cenp-A/Cid (Cenp-A) and a DNA stain (DNA). Co-localization of Cal1-EGFP with Cenp-A/Cid at centromeres was observed throughout the cell cycle. In addition, Cal1-EGFP signals were also prominent in the nucleolus (arrowhead; see also B). The arrow indicates non-specific midbody staining by anti-Cenp-A/Cid. The bar in the third row illustrates magnification in the top three rows and corresponds to 5 μ m; the bar in the bottom row illustrates magnification in the two bottom rows and corresponds to 7 μ m.

(B) During interphase, Cal1-EGFP (Cal1-EGFP) is present in and around the nucleolus, as revealed by double labeling with an antibody against Fibrillarin (Fibrillarin) and DNA staining (DNA). Bar = 5 μ m.