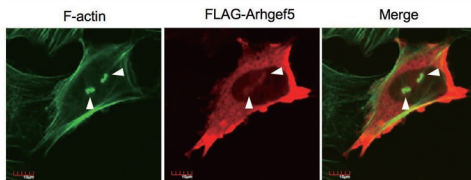


A

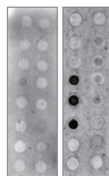
Arhgef5 siRNA + FLAG-Arhgef5 + 4-OHT



B

NIH3T3-c-*Src*-MER

Lysophosphatidic Acid (LPA)	○ ○	Sphingosine-1-phosphate (S1P)
Lysophosphocholine (LPC)	○ ○	PtdIns(3,4)P ₂ (P-3416)
PtdIns (P-0016)	○ ○	PtdIns(3,5)P ₂ (P-3516)
PtdIns(3)P (P-3016)	○ ○	PtdIns(4,5)P ₂ (P-4516)
PtdIns(4)P (P-4016)	○ ○	PtdIns(3,4,5)P ₃ (P-3916)
PtdIns(5)P (P-5016)	○ ○	Phosphatidic Acid PA
Phosphatidylethanolamine PE	○ ○	Phosphatidylserine PS
Phosphatidylcholine PC	○ ○	Blank

GST
GST-PH

C

