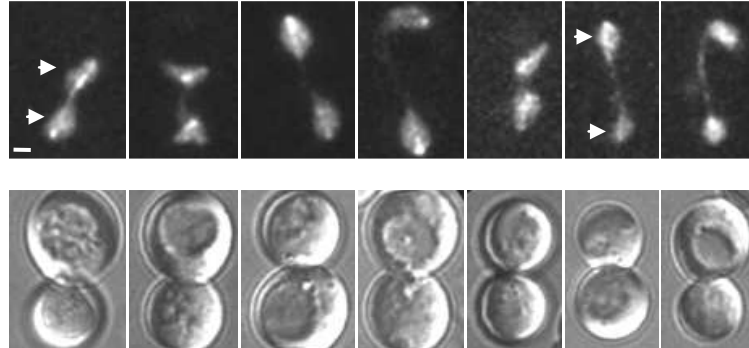
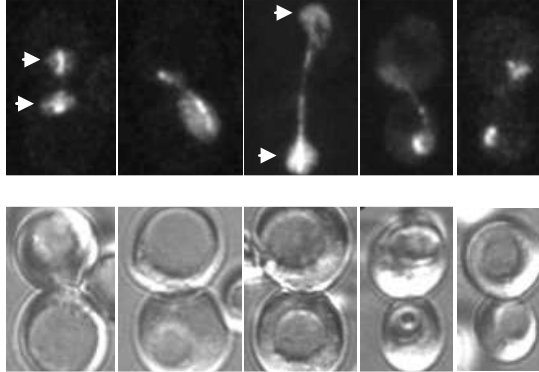


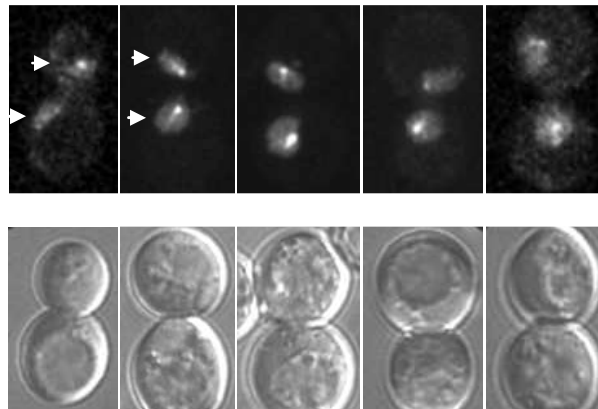
A *cdc15-2*



B *cdc14-1*

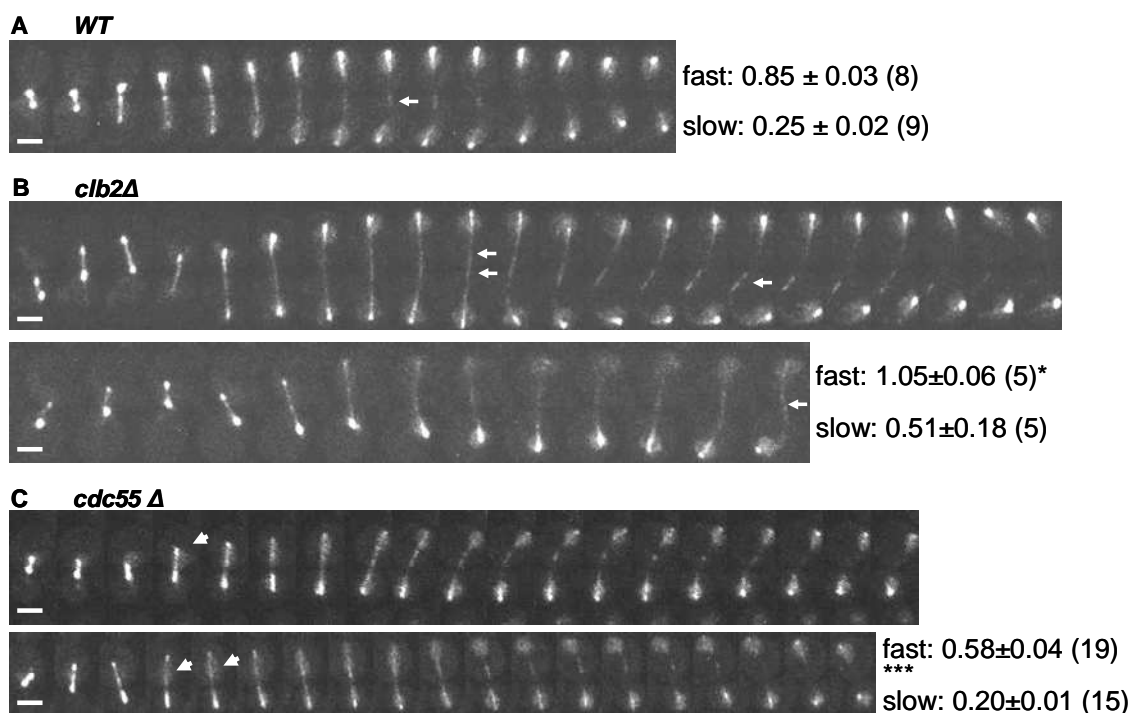


C *cdc5-7*

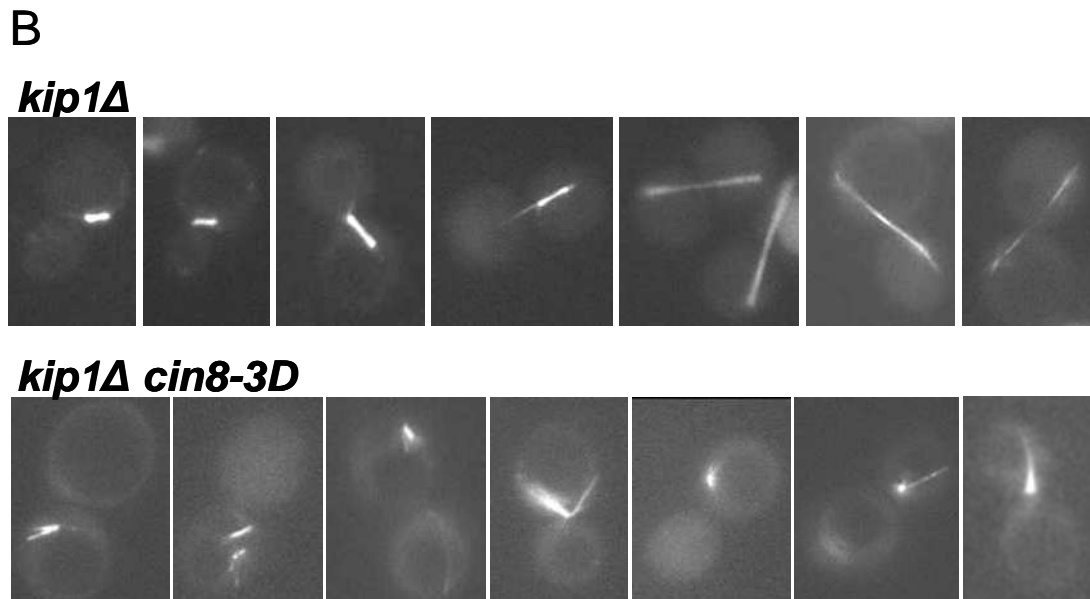
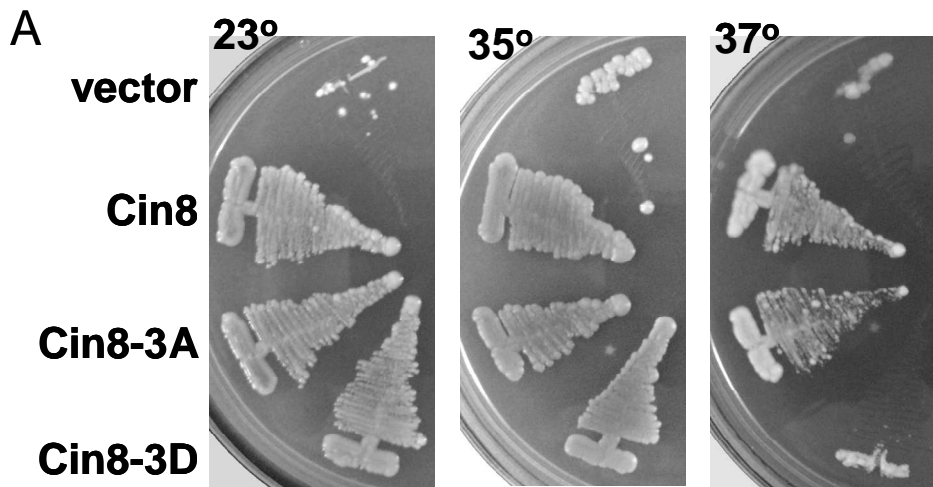


Localization of Cin8-GFP in (A) *cdc15-2*, (B) *cdc14-1* and (C) *cdc5-7* cells arrested in anaphase at 37°C for 2 h. Representative 2D projections are shown. Upper panels – Cin8-GFP, lower panels – corresponding bright field images. Bar, 1 μ m. In all cells arrested at late anaphase, a large portion of Cin8-GFP is localized diffusively in the divided nuclei (arrows). Strains are: LGY2968, LGY2974 and LGY2986.

Figure S2



Localization of Cin8-3GFP in (A) WT, (B) *clb2Δ* and (C) *cdc55Δ* cells. 2D projection images of time lapse recording are shown. In B and C, two representative cells in each genotype are shown. Time interval between frames, 2 min. Bar, 2 μ m. Strains are: LGY 2533, LGY3033 and LGY 3021. In A and B, arrows indicate Cin8 localization to the middle region of the spindle. In C, small arrows indicate diffusive localization of Cin8 in early-mid anaphase, which is not present in WT cells. Spindle elongation rates (μ m/min, average \pm SEM) during the fast and the slow phases for each genotype are indicated. The number of measurements is indicated in parentheses.



A. Viability of *cin8Δkip1Δ* cells expressing phosphorylation mutants of Cin8 from a CEN plasmid at various temperatures (indicated on top of each panel) on YPD plates containing 5 μ g/ml cyclohexamide. Stains are: (LGY2038, LGY2544, LGY2547, LGY2554). **B.** Spindle morphologies of cells *cin8Δkip1Δ* expressing either Cin8 (LGY2544, top panel) or Cin8-3D (LGY2554, bottom panel), grown for 4 h at 37°C. Bar; 2 μ m.

Figure S4



Anaphase spindle localization of Cdc14-GFP in *kip1* Δ cells expressing Nuf2-GFP. Bar, 2 μ m; Time intervals, 1 min. For details see (Movshovich et al., 2008). At late anaphase, Cdc14-GFP is not localized to the midzone region (arrow).