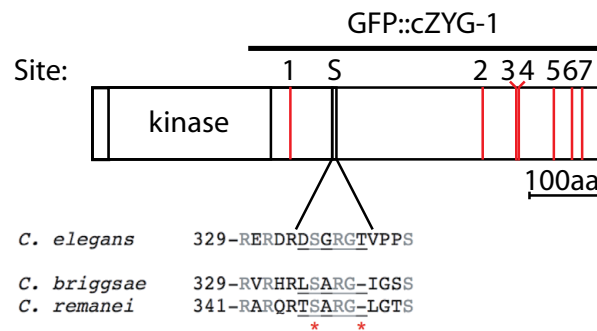


Fig. S1. *Skr-1/2(RNAi)* conditions deplete SKR-1 and SKR-2 proteins. Western blotting of embryo extracts from *control(RNAi)* and *skr-1/2(RNAi)* treated worms. The SKR-1/2 antibody, which recognizes both SKR-1 and SKR-2, shows that protein levels are significantly depleted after RNAi treatment (arrowhead). DM1A antibody was used as a loading control.



Site	Position	WT Sequence	Mutated sequence
1	275	SREHS	AREHA
2	544	TKVNE	AKVNA
3	590	SLMPS	ALMPA
3/4	596	SLMPS/SSQTS	ALMPA/ASQTA
5	642	TDENS	ADENA
6	668	SIQAT	AIQAA
7	681	TSKAD	ASKAA
S	350	DSGRGT	AAGRGT

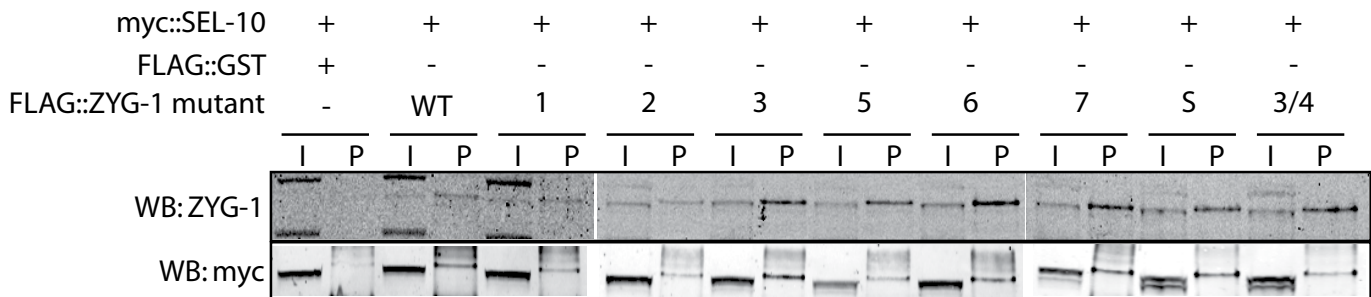


Fig. S2. Analysis of ZYG-1 and SEL-10 binding. A) Diagram of ZYG-1 indicating the position of the putative Slimb-binding motif (S) and putative SEL-10 binding motifs (1-7). The full-length ZYG-1 protein sequences from *C. elegans*, *C. briggsae* and *C. remanei* were aligned using the ClustalW algorithm and alignments of the region containing the *C. elegans* Slimb-binding motif are shown. The asterisks denote the essential phospho-residues of the *C. elegans* Slimb-binding motif that would be essential for substrate recognition. B) Position and sequence of each putative CPD. Fourth column indicates mutations made in the FLAG::ZYG-1 construct and which were used for the immunoprecipitations shown in C. C) FLAG-tagged WT or mutant ZYG-1 and myc::SEL-10 were expressed in HEK293T cells. Proteins were immunoprecipitated with FLAG beads and probed with ZYG-1 (to detect FLAG::ZYG-1) and MYC antibodies (to detect myc::SEL-10). I= input, P= immunoprecipitate.

Table S1. *C. elegans* strains used in this study

Strain Name	Genotype	Source
OC14	zyg-1(it25)	(Kemp et al., 2007)
OC341	unc-119(ed4); bsIs8[pMS5.1 in pID3.01:unc-119(+) pie-1-GFP-zyg-1C-terminus]	(Peters et al., 2010)
RB1432	sel-10(ok1632)	Gene Knockout Consortium
OC156	unc-119(ed4); zyg-1(it25); ruIs32[unc-119(+) pie-1::GFP::H2B] III;bsIs2 [pCK5.5: pie-1-gfp-spd-2]	(Song et al., 2008)
OH1476	lin-23(ot1) II; oxIs12 X	(Hebeisen and Roy, 2008)
OC570	zyg-1(it25) lin-23(ot1)II; bsIs2 [pCK5.5: pie-1-gfp-spd-2];ltIs37[pAA64: unc-119(+) pie-1-mcherry-his58]	This study
OC577	zyg-1(it25); bsIs2 [pCK5.5: pie-1-gfp-spd-2];fem-1(hc17);sel-10(ok1632)	This study
OC495	zyg-1(it25)II; bsIs2 [pCK5.5: pie-1-gfp-spd-2];ltIs37[pAA64: unc-119(+) pie-1-mcherry-his58]	This study
OC554	zyg-1(it25) lin-23(ot1)II	This study
OC564	zyg-1(it25); bsIs2 [pCK5.5: pie-1-gfp-spd-2]; fem-1(hc17)	This study
OC590	zyg-1(it25) lin-23(ot1); bsIs2 [pCK5.5: pie-1-gfp-spd-2]; fem-1(hc17); sel-109ok1632)	This study

Table S1. *C. elegans* strains used in this study