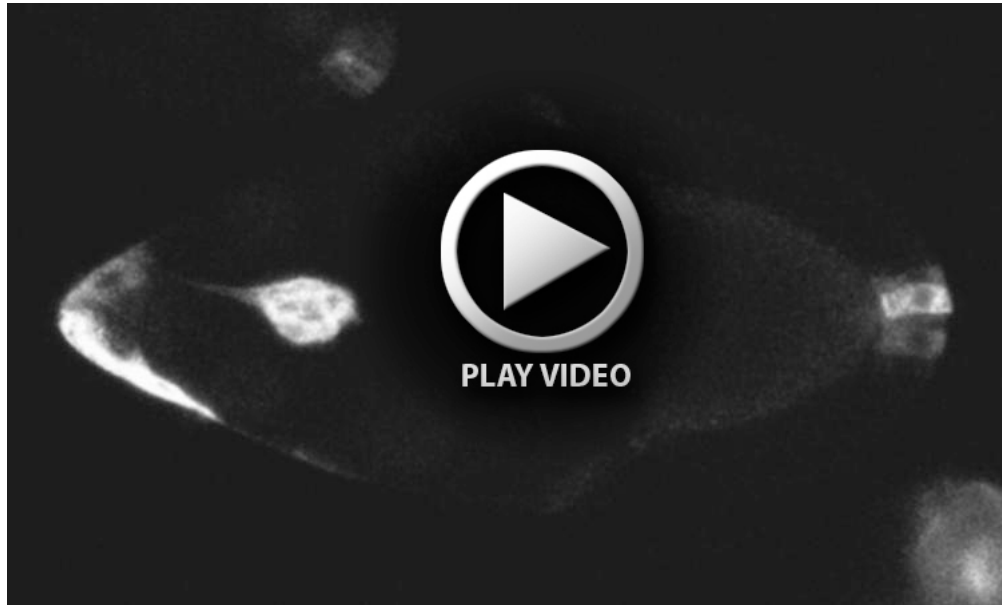


**Fig. S1 Vav interacts genetically with PVR and EGFR during BC migration.** Wild type (A), *vav* (B), *pvr* (C), *vav;pvr* (D), *egfr* (E) and *vav;egfr* (F) mutant BC clusters (arrowhead). (G) Quantification of the BC migration phenotype of S10 egg chambers of the indicated genotypes.



**Movie 1.** Movie showing dynamics of the migration of wild type BCs.



**Movie 2.** Movie showing dynamics of the migration of *vav* mutant BCs supporting Fig. 2. It shows “*in vivo*” that the ability to grow, maintain and stabilize long front extensions is compromised when Vav function is reduced.