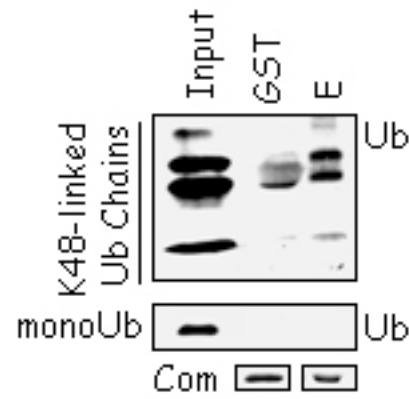
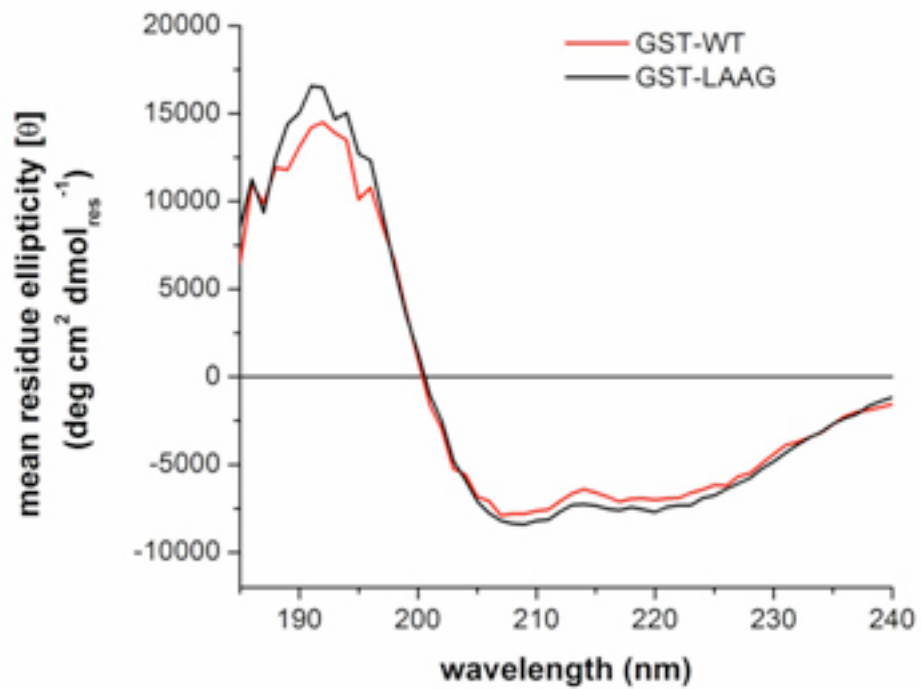


**A****B**

**Fig. S1.** (A) In vitro pull-down assay using the indicated GST-tagged ER $\alpha$  constructs. GST-fusion proteins were incubated with synthetic polyUb<sub>2-7</sub> linked by Lys48 or mono ubiquitin and analyzed in immunoblot as indicated. (B) Circular dichroism spectra of GST-WT and GST-LAAG fusion proteins in 25 mM sodium phosphate (pH 7.5), 150 mM NaF, 16 °C.

**Table S1. List of oligonucleotides used.**

<b>Construct (amino acids)</b>	<u>ABC (3-256)</u>	<u>C (181-256)</u>	<u>E (301-547)</u>	<u>ER<math>\alpha</math> 301-439</u>	<u>ER<math>\alpha</math> 439-547</u>
Primer Forward	5'- GCGGATCCCGGACCCT CCACACCAAAGCATC- 3'	5'- GCGGATCCCGGGAGA CTCGCTACTGTGCAGT G-3'	5'- GCGGATCCCGGTCTAA GAAGAACAGCCTGGC C-3'	5'- GCGGATCCCGGTCTAA GAAGAACAGCCTGGC C-3'	5'- GCGGATCCCGGAATCT GCAGGGAGAGGAGTT T-3'
Primer Reverse	5'- CCGCTCGAGCGGGTCT TTTCGTATCCCACCTT T-3'	5'- CCGCTCGAGCGGGTCT TTTCGTATCCCACCTT T-3'	5'- CCGCTCGAGCGGGTG GCTTTGGTCCGTCTCC TC-3'	5'- CCGCTCGAGCGGATTC ATCATGCGGAACCGA GA-3'	5'- CCGCTCGAGCGGGTG GCTTTGGTCCGTCTCC TC-3'