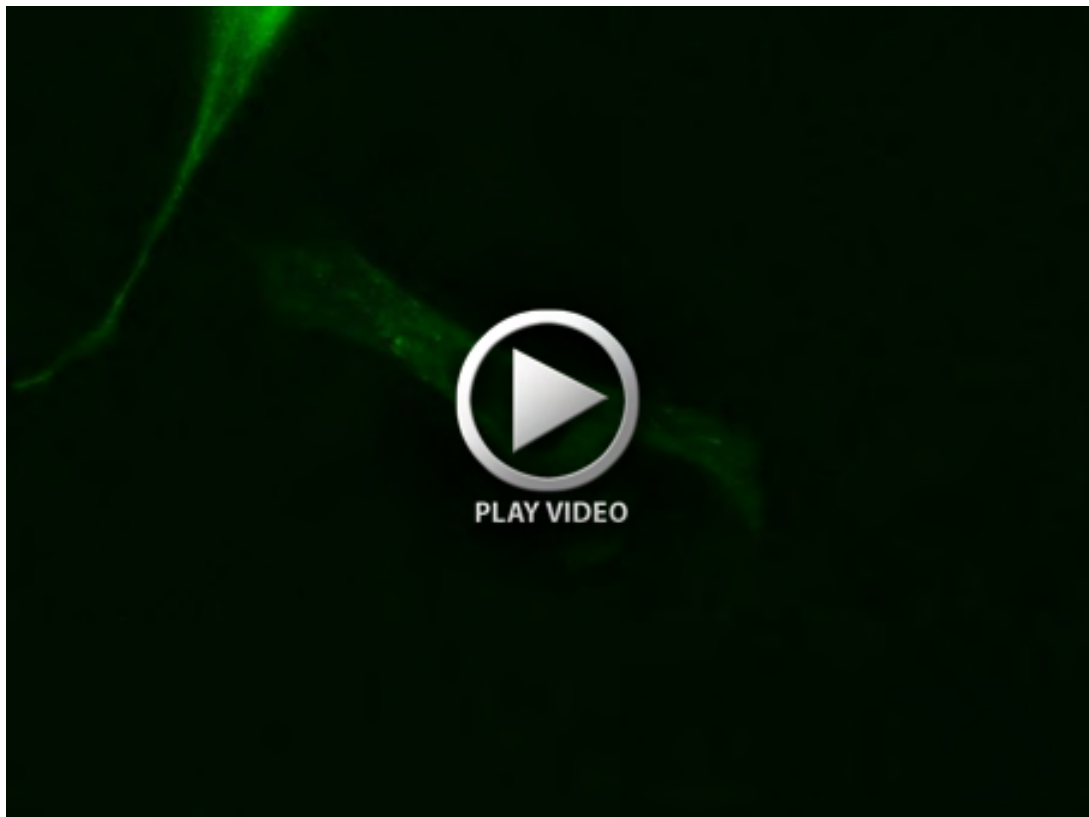


Fig. S1. IFM analysis of NIH3T3 cell culture with scratch after 24 h of serum starvation with antibodies against α -tubulin (red) and NHE1 (green). Open arrows indicate direction of migration into the scratch.



Movie 1. Live cell imaging by differential interference contrast (DIC) of wt MEFs stably expressing NHE1-GFP and taken with an Olympus IX81 microscope for 2 h with a frame taken every min using a Roper-Photometrics Coolsnap HQ2 camera.



Movie 2. Live cell imaging by fluorescence microscopy of wt MEFs stably expressing NHE1-GFP (same cells as shown in Movie 1) and taken with an Olympus IX81 microscope for 2 h with a frame taken every min using a Roper-Photometrics Coolsnap HQ2 camera.