

SUPPLEMENTARY FIGURES

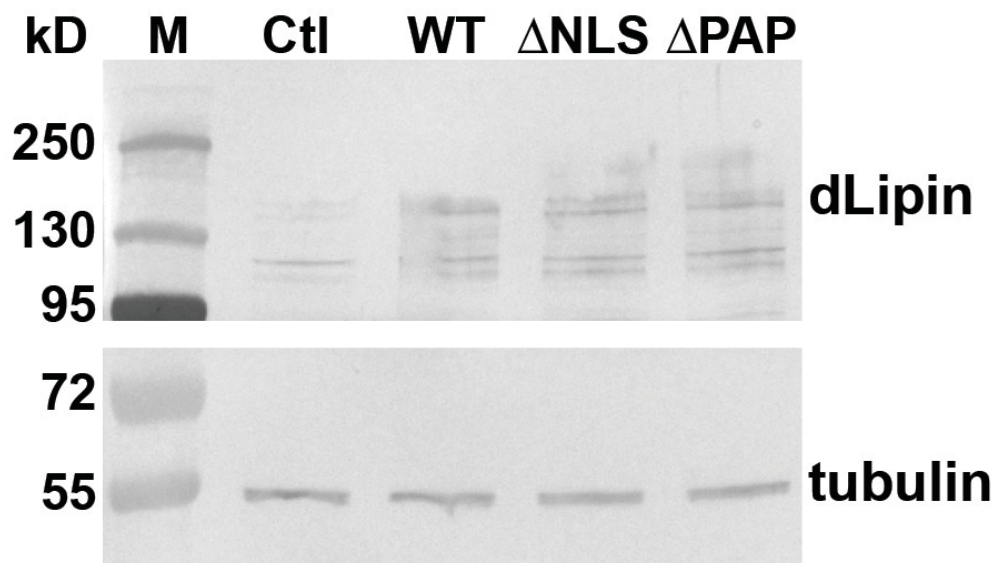


Figure S1. Transgenic lines UAS-dLipinWT, UAS-dLipinΔNLS, and UAS-dLipinΔPAP express similar amounts of ectopic dLipin protein. Transgenes were expressed using Sgs-GAL4 in larval salivary glands that express no or very low levels of endogenous dLipin protein (Ugrankar et al., 2011) (Ctl; Sgs-GAL4 > w^{1118}). Tubulin was used as a loading control.

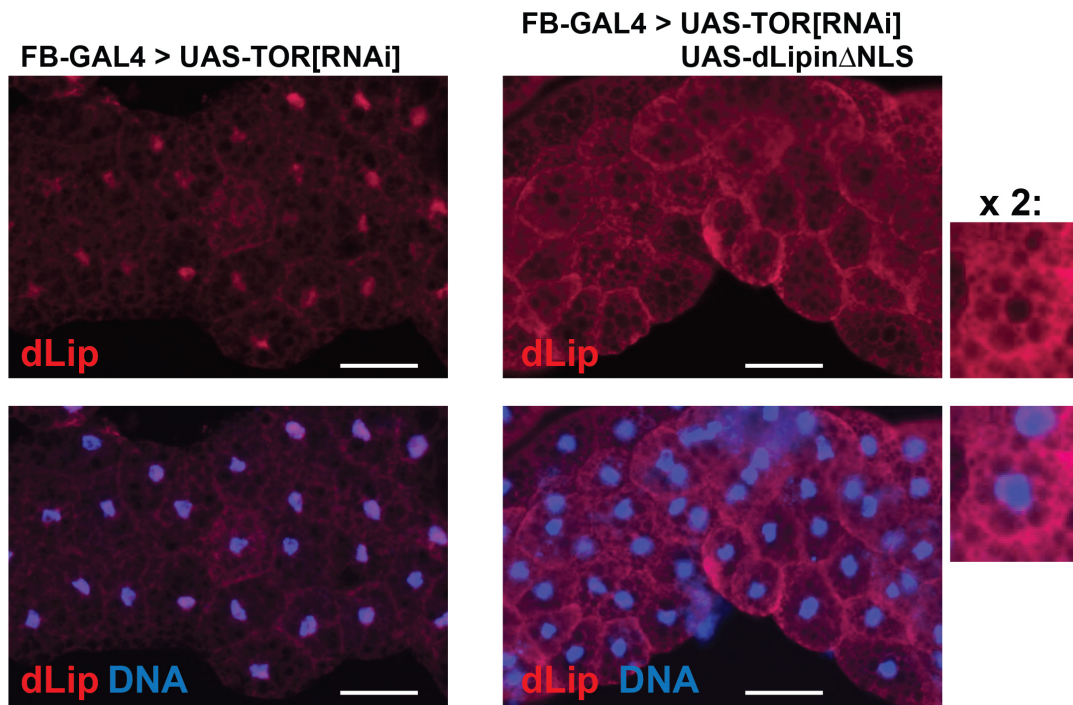


Figure S2. dLipin Δ NLS does not enter the cell nucleus and prevents nuclear entry of endogenous dLipin. Staining with anti-dLipin antibody (dLip, red) indicates accumulation of dLipin in cell nuclei (DNA stained with DAPI, blue) of fat body cells that lack TOR (FB-GAL4 > UAS-TOR[RNAi]). Concomitant expression of dLipin Δ NLS prevents nuclear accumulation of dLipin leading to cell nuclei that are apparently devoid of both wild-type dLipin and dLipin Δ NLS. Magnified images of one cell with and without DAPI staining are juxtaposed to facilitate visualization of nuclear exclusion of dLipin. Scale bars: 50 μ m.