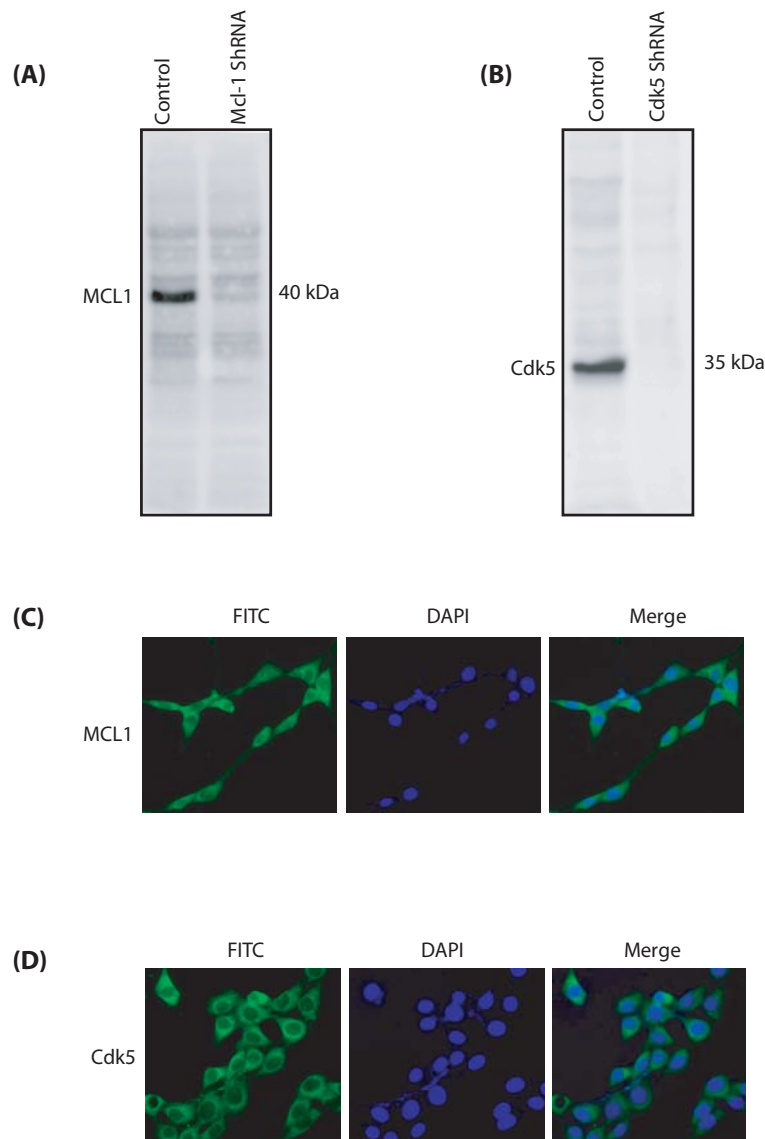


### Supplementary Table S1

	<b>Antibody</b>	<b>atalogue No</b>	<b>RRID</b>	<b>Company</b>
1	Cdk5 (rabbit polyclonal)	SC-173	AB_631224	Santa Cruz
2	Cdk5 (mouse monoclonal)	SC-249	AB_627240	Santa Cruz
3	$\alpha$ -Tubulin	SC-8035	AB_628408	Santa Cruz
4	Acti	SC-8432	AB_626630	Santa Cruz
5	P35	SC-820	AB_632137	Santa Cruz
6	Lamin A	SC-20680	AB_648148	Santa Cruz
7	PSD95	SC-32290	AB_628114	Santa Cruz
8	MAP2	SC-20172	AB_2250101	Santa Cruz
9	Enolase	SC-31859	AB_2099315	Santa Cruz
10	Mcl-1	PB9132	-	oster Biological Technology
11	6x-His	00-1711-1MG	Lot# PUR01016008	Columbia Bioscience



Supplementary Figure 1. Validation of Antibodies and siRNA knockdown (A) Validation of Mcl-1 shRNA. HT22 cells were transfected with Mcl-1 shRNA and cell lysates were analyzed 30 hours later by immunoblot analysis (B) Validation of Cdk5 shRNA. HT22 cells were transfected with Cdk5 shRNA and cell lysates were analyzed 30 hours later by immunoblot analysis (C) Mcl-1 localization in HT22 cells. Immunofluorescent analysis of Mcl-1 in paraformaldehyde-fixed HT22 cells using Mcl-1 polyclonal antibody (D) Cdk5 localization in HT22 cells. Immunofluorescent analysis of Cdk5 in formaldehyde-fixed HT22 cells using a Cdk5 polyclonal antibody