

Figure S1. Ki67 stained preparations of MCF7 and MDA231 cells grown on decellularised rat lung. Both MCF7 and MDA231 samples had Ki67 positive subpopulations, with stain colocalisation being present on both DNA and in nucleoli. Scale bar 50 μm . n=3.

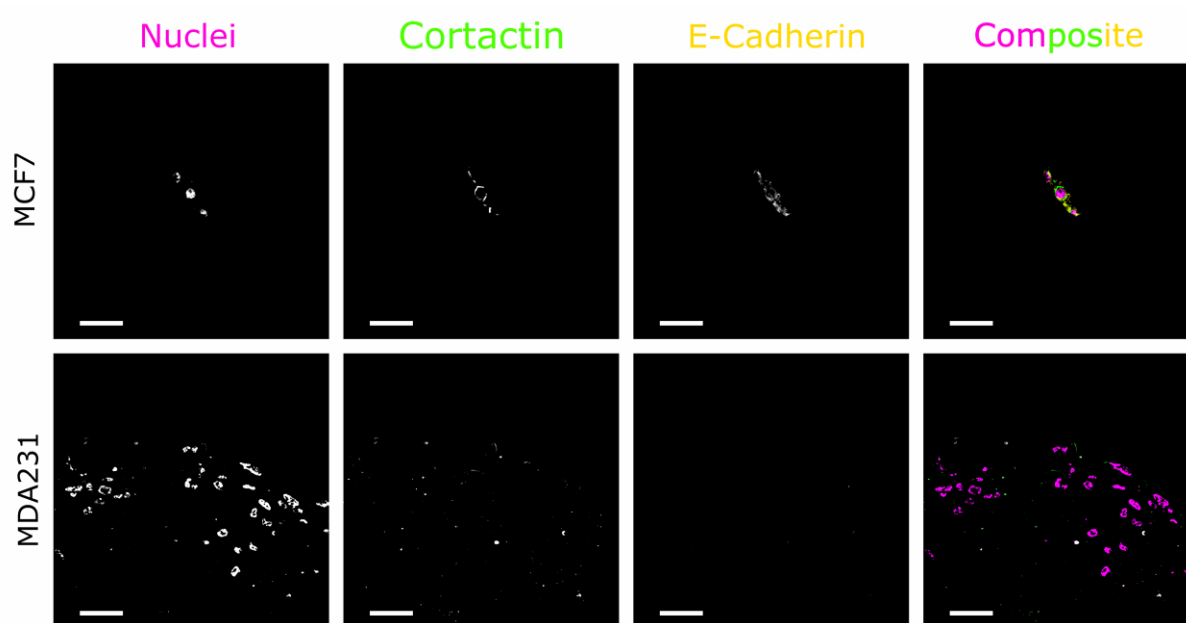


Figure S2. Cortactin and E-cadherin stained preparations of MCF7 and MDA231 cells grown in decellularised rat lung. Disambiguation of Figure 6C showing Cortactin and E-cadherin localisation differences in MCF7 and MDA231 cells grown in decellularised rat lung.