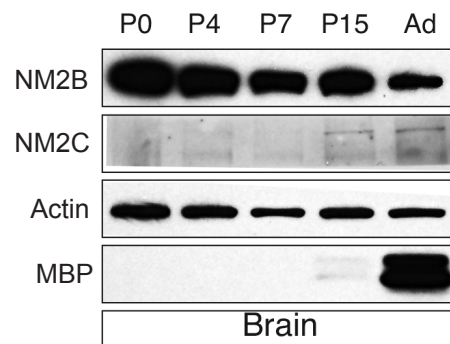
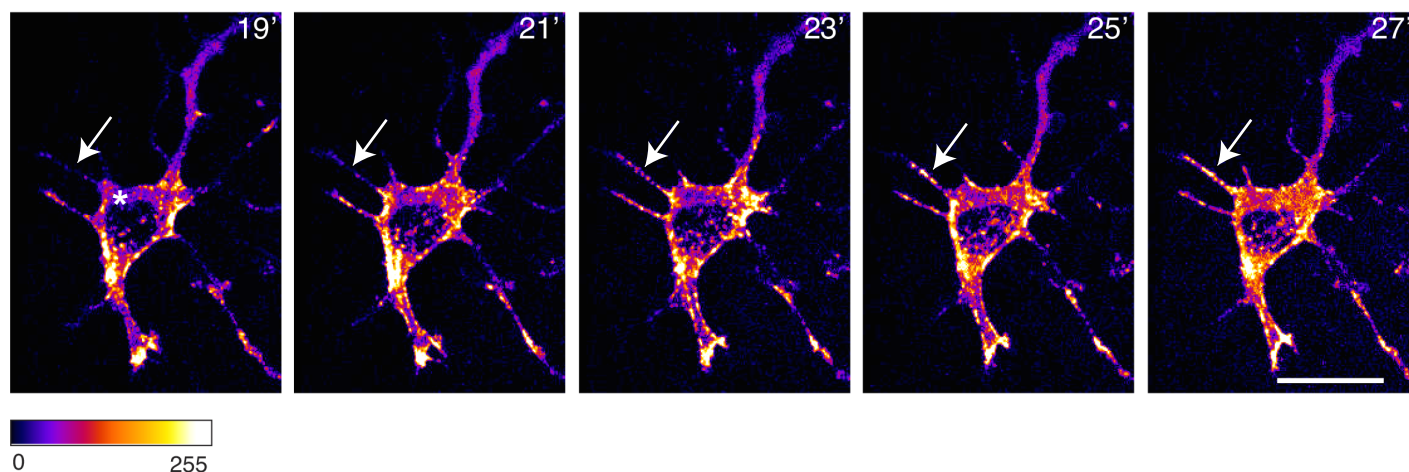


### S1 Figure



**Figure S1 – Differential expression of NM2B and NM2C during *in vivo* myelination.** Western blot from whole CNS rat brain at different time points of developmental myelination to analyze bulk protein expression levels of NM2B (down-regulation) and NM2C (up-regulation) and their correlation with MBP expression.

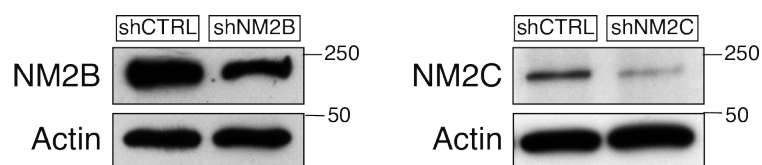
## S2 Figure



**Figure S2 - Dynamic changes on NM2B-GFP subcellular distribution in OPC nascent protrusions.** Time-lapse images of OPC cultures purified from transgenic NM2B-GFP mice. Images were acquired using a 63x oil-objective for a period of 35 min. Selected frames clearly show re-localization of NM2B signal from the cortex to the protrusions. Scale bar corresponds to 20 $\mu$ m.

### S3 Figure

**A**



**Figure S3 – Validation of knockdown efficiency.** Western blots showing the decrease of NM2B and NM2C protein expression in OPC cultures transduced with lentiviral particles. Extracts were prepared 3 days after transduction. Data related to **Figure 5**.

**Table S1 – Global NM2A, NM2B, NM2C and Myo18a interactomes.** Raw data related to **Figure 3A**.

[Click here to Download Table S1](#)

**Table S2 - Functional enrichment heatmap analysis of pooled NM2A/NM2B vs. NM2C/Myo18a interactors using DAVID bioinformatics tool.** Raw data related to **Figure 3B**.

[Click here to Download Table S2](#)

**Table S3 - NM2A/NM2B Functional Annotation Table, using DAVID bioinformatics tool.** Raw data related to **Figure 3B**.

[Click here to Download Table S3](#)

**Table S4 - NM2C/Myo18a Functional Annotation Table, using DAVID bioinformatics tool.** Raw data related to **Figure 3B**.

[Click here to Download Table S4](#)

**Table S5 - NM2A/NM2B Functional Annotation Clustering, using DAVID bioinformatics tool.** Raw data related to **Figure 3B**.

[Click here to Download Table S5](#)

**Table S6 - NM2C/Myo18a Functional Annotation Clustering, using DAVID bioinformatics tool.** Raw data related to **Figure 3B**.

[Click here to Download Table S6](#)