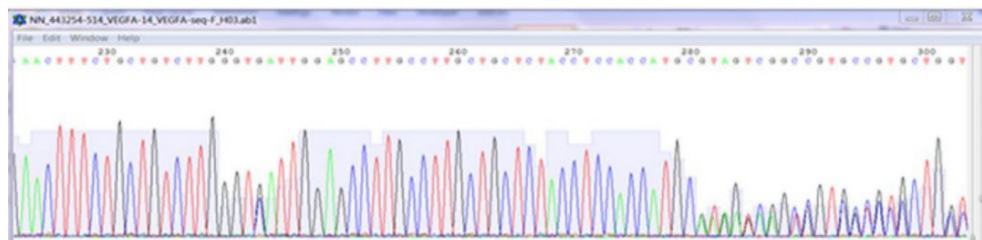
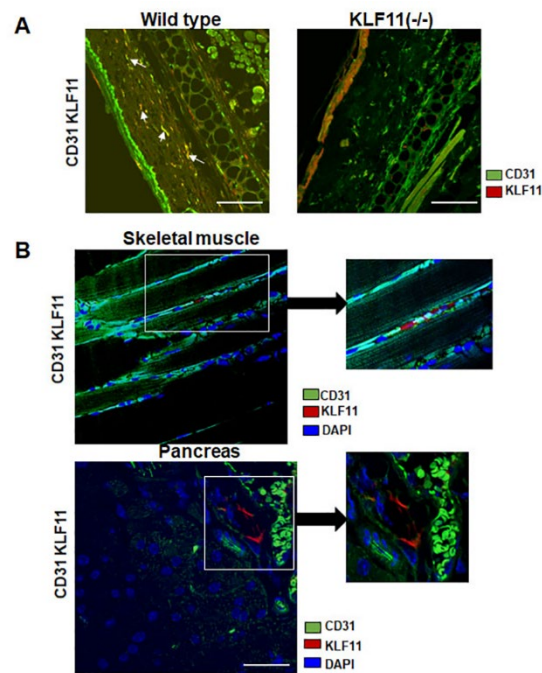


```
GAAGCCGGGCTCATGGACGGGTGAGGCGGCGGTGTGCGCAGACAGTGCTCCAGCCGCGCGCTCCCCAGGCC  
TGGCCCCGGCCTCGGGCCGGGAGGAAGAGTAGCTCGCCGAGGCGCCGAGGAGAGCGGGCCGCCACAGCCC  
GAGCCGAGAGGGAGCGCGAGCCGCGCCGCCGCCCGGTGGGCTCCGAAACCATGAACCTTCTGCTGTCTTGGG  
TG↓CATTGGAGCCTTGCTTGTCTACCTCCACCATGC↓CAAGGTAAGCGGTCTGTGCCCTGCTGGCGCCGCG  
GGCCGCTGCGAGCGCTCTCCCGGCTGGGACGTGCGTGCAGCGCGCGTGGGGGCTCCGTGCCCCACGCGG  
GTCCATGGGACACAGGCGTGGGCGTCCCCCTCTGTCGTCTTAGG
```

**Fig. S1.** PCR sequence (wild type) and the cutting edge used for the knockdown of VEGF-A in HT29 cells. PCR primers; hVEGF-A exon 1; start codon; gRNA g3; gRNA g7; ↓ gRNA cutting site.

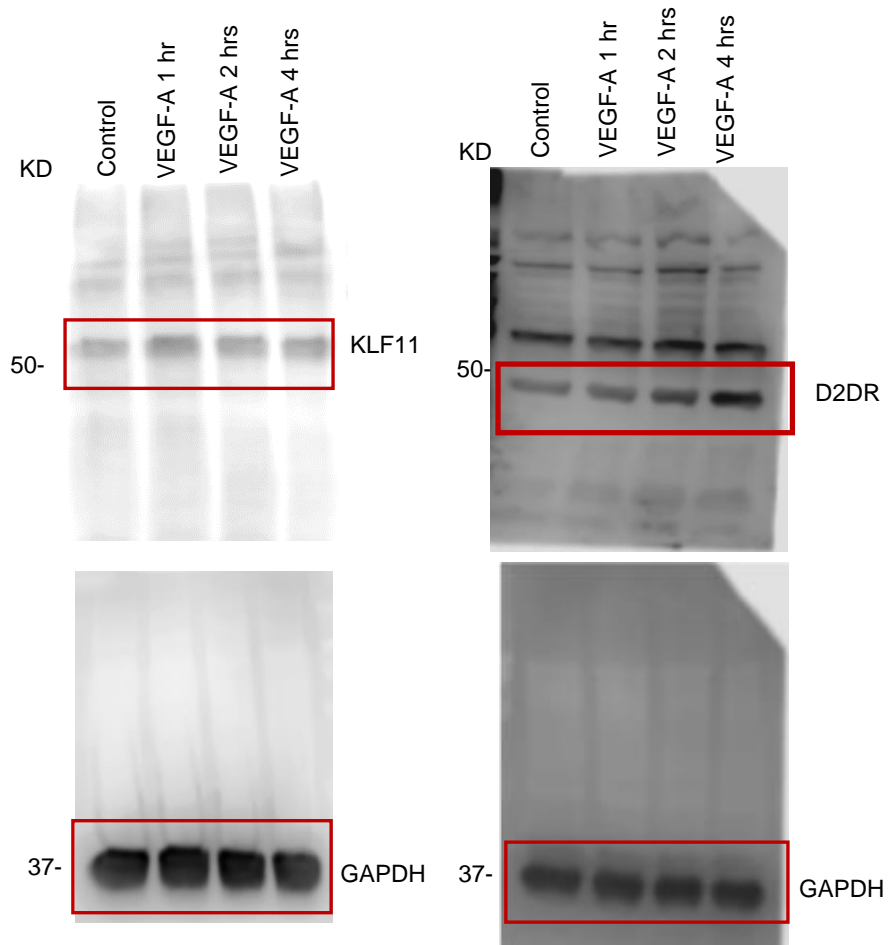


**Fig. S2.** PCR genotyping data of HT29 hVEGF-A (-/-) human colon cancer cell line clone.

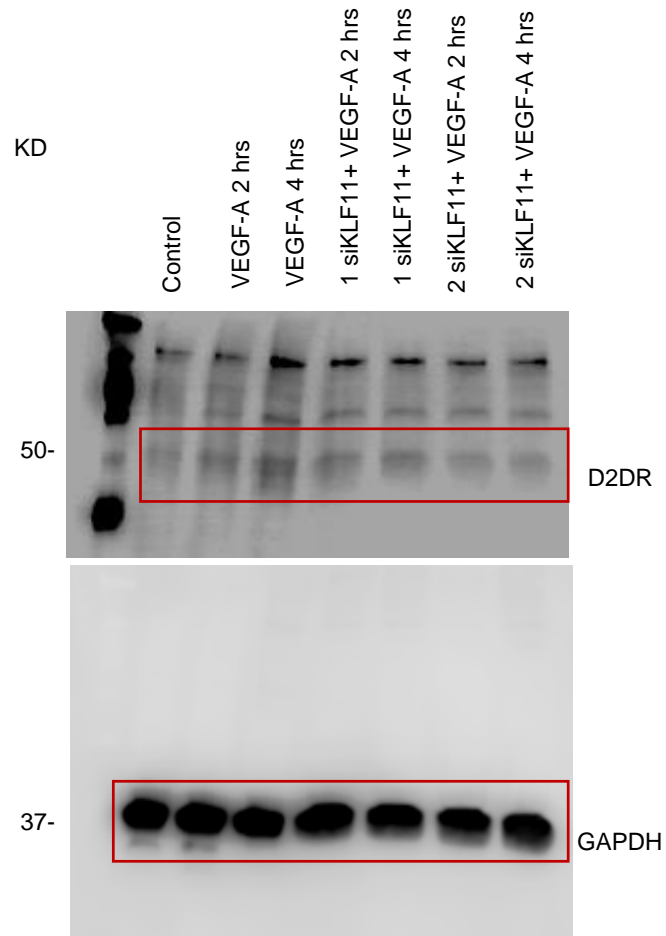


**Fig. S3 (A and B).** (A) Confocal images (arrows) show colocalization of KLF11 and CD31, i.e., expression of KLF11 in the endothelial cells of ears in wild type (KLF11  $^{+/+}$ ) C57/B16 mice. In contrast, there are no expressions of KLF11 in endothelial cells of ears in KLF11  $(^{-/-})$  C57/B16 mice (Scale Bar 40  $\mu\text{m}$ ). (B) KLF11 expression is specifically absent in CD31 positive endothelial cells in KLF11 expressing skeletal muscle and pancreas collected from endothelial cell-specific KLF11  $(^{-/-})$  mice (Scale Bar 40  $\mu\text{m}$ ).

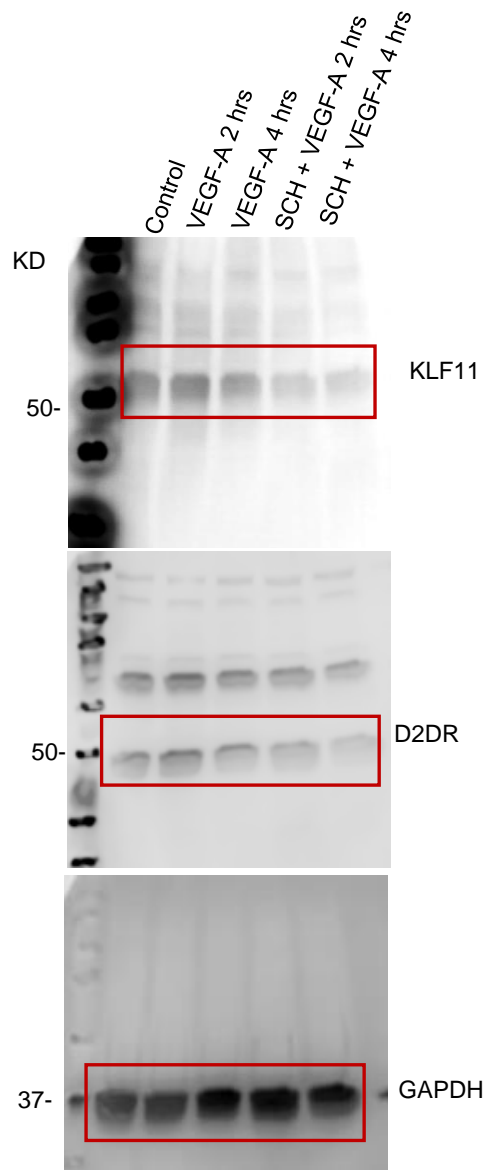
**Fig S4. Blot transparency.**



Full unedited gels for Figure 4B



Full unedited gels for Figure 4C



Full unedited gels for Figure 5B

**Table S1.** Primers used for generation of the KLF11 shRNA knockin mice

Primers	Sequence
PR425N	5' - GGTGATAGGTGGCAAGTGGTATTCCGTAAG -3'
PR436N-1	5' - ATCAACTACCGCCACCTCGACC -3'
KLF-R1	5' - CTACTTCCATTTGTCACGTCCTGCACG -3'
KLF-R2	5' - CTAGAGCGGCCGATGAGTT -3'
KLF STOP5-F	5' - GAAGCGGGTAGGCCTTTGG -3'
KLF STOP5-R	5' - TAGCCGAATAGCCTCTCCACC -3'
KLF-F	5' - GACAGCACAAAAGGAAACTCACCCCTAAC -3'
PR522N	5' - GACGATGTAGGTCACGGTCTCGAAG -3'
Frt-R1	5' - GGAATAGGAACTTCGTCGACA -3'
Frt-R2	5' - CCGCGAAGTTCCTATACCTTTTG -3'
R10N	5' - AGTTCTCTGCTGCCTCCTGGCTTCT -3'
R13	5' - CATAAACCCAGATGACTCCTATCCTC-3'