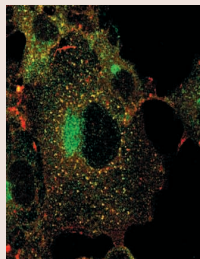


# Journal of Cell Science

VOLUME 114 (11) 2001



**Cover:** The image shows the localization of Cbl (red) in clathrin-positive (green) membrane structures after stimulation of c-Cbl-overexpressing COS-7 cells that were permeabilized and stained after stimulation for 5 minutes with EGF. See article by A. A. de Melker et al. (pp. 2167-2178) demonstrating that c-Cbl is recruited to the plasma membrane and associates with the activated EGF receptor prior to its internalization.

[jcs.biologists.org](http://jcs.biologists.org)

## EDITORIAL

1967 **JCS online – HighWire Press, free access and non-profit publishing.** Watt, F. and Sever, R.

## STICKY WICKET

1969 **On the role of editors (some smells aren't as bad as others - or who delivers them didn't necessarily produce them).** Caveman

## CELL SCIENCE AT A GLANCE

1971 **Cyclic AMP signalling.** Fimia, G. M. and Sassone-Corsi, P.

## COMMENTARIES

1973 **The Trio family of guanine-nucleotide-exchange factors: regulators of axon guidance.** Bateman, J. and Van Vactor, D.

1981 **Myosin learns to walk.** Mehta, A.

## RESEARCH ARTICLES

- 1999 **Investigation of the roles of  $\text{Ca}^{2+}$  and  $\text{InsP}_3$  diffusion in the coordination of  $\text{Ca}^{2+}$  signals between connected hepatocytes.** Clair, C., Chalumeau, C., Tordjmann, T., Poggioli, J., Erneux, C., Dupont, G. and Combettes, L.
- 2009 **Life without a cell membrane: regeneration of protoplasts from disintegrated cells of the marine green alga *Bryopsis plumosa*.** Kim, G. H., Klotchkova, T. A. and Kang, Y.-M.
- 2015 **The *Drosophila* Dpit47 protein is a nuclear Hsp90 co-chaperone that interacts with DNA polymerase  $\alpha$ .** Crevel, G., Bates, H., Huikeshoven, H. and Cotterill, S.
- 2027 **DNA replication licensing and human cell proliferation.** Stoeber, K., Tlsty, T. D., Happerfield, L., Thomas, G. A., Romanov, S., Bobrow, L., Williams, E. D. and Williams, G. H.
- 2043 **Repression of Wnt-5a impairs DDR1 phosphorylation and modifies adhesion and migration of mammary cells.** Jönsson, M. and Andersson, T.
- 2055 **Collagen IV synthesis is restricted to the enteroendocrine pathway during multilineage differentiation of human colorectal epithelial stem cells.** Kirkland, S. C. and Henderson, K.
- 2065 **The interaction of plectin with actin: evidence for cross-linking of actin filaments by dimerization of the actin-binding domain of plectin.** Fontao, L., Geerts, D., Kuikman, I., Koster, J., Kramer, D. and Sonnenberg, A.
- 2077 **Rabbit M cells and dome enterocytes are distinct cell lineages.** Lelouard, H., Sahuquet, A., Reggio, H. and Montcourrier, P.
- 2085 **Sonic hedgehog increases the commitment of pluripotent mesenchymal cells into the osteoblastic lineage and abolishes adipocytic differentiation.** Spinella-Jaegle, S., Rawadi, G., Kawai, S., Gallea, S., Faucheu, C., Mollat, P., Courtois, B., Bergaud, B., Ramez, V., Blanchet, A. M., Adelmant, G., Baron, R. and Roman-Roman, S.
- 2095 **The non-catalytic domain of the *Xenopus laevis* auroraA kinase localises the protein to the centrosome.** Giet, R. and Prigent, C.
- 2105 **trans-dominant inhibition of connexin-43 by mutant connexin-26: implications for dominant connexin disorders affecting epidermal differentiation.** Rouan, F., White, T. W., Brown, N., Taylor, A. M., Lucke, T. W., Paul, D. L., Munro, C. S., Uitto, J., Hodgins, M. B. and Richard, G.
- 2115 **Retargeting of the mitochondrial protein p32/gC1Qr to a cytoplasmic compartment and the cell surface.** van Leeuwen, H. C. and O'Hare, P.
- 2125 **MT1-MMP in rat testicular development and the control of Sertoli cell proMMP-2 activation.** Longin, J., Guillaumot, P., Chauvin, M.-A., Morera, A.-M. and Le Magueresse-Battistoni, B.
- 2135 **Fission yeast mfr1 activates APC and coordinates meiotic nuclear division with sporulation.** Blanco, M. A., Pelloquin, L. and Moreno, S.
- 2145 **Priming of insulin granules for exocytosis by granular  $\text{Cl}^-$  uptake and acidification.** Barg, S., Huang, P., Eliasson, L., Nelson, D. J., Obermüller, S., Rorsman, P., Thévenod, F. and Renström, E.
- 2155 **Myosin II-dependent cylindrical protrusions induced by quinine in *Dictyostelium*: antagonizing effects of actin polymerization at the leading edge.** Yoshida, K. and Inouye, K.
- 2167 **c-Cbl ubiquitinates the EGF receptor at the plasma membrane and remains receptor associated throughout the endocytic route.** de Melker, A. A., van der Horst, G., Calafat, J., Jansen, H. and Borst, J.
- 2179 **Store-operated influx of  $\text{Ca}^{2+}$  in pancreatic  $\beta$ -cells exhibits graded dependence on the filling of the endoplasmic reticulum.** Dyachok, O. and Gylfe, E.
- 2187 **SHP-2 complex formation with the SHP-2 substrate-1 during C2C12 myogenesis.** Kontaridis, M. I., Liu, X., Zhang, L. and Bennett, A. M.
- 2199 **Peroxisomal membrane proteins are properly targeted to peroxisomes in the absence of COPI- and COPII-mediated vesicular transport.** Voorn-Brouwer, T., Kragt, A., Tabak, H. F. and Distel, B.