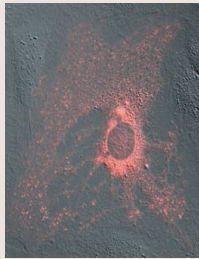


Journal of Cell Science

Volume 115 (10) 2002



Cover: Insulin-like growth factor II mRNA-binding proteins (IMPs) are zipcode-binding proteins that mediate cytoplasmic mRNA localization. The confocal image shows large RNA-containing GFP-IMP1 granules (red pseudo-colour) on their way along microtubules to destinations at the cellular periphery, where they become anchored. For more information, see the article by F. C. Nielsen et al. (p. 2087) in this issue.

jcs.biologists.org

Research Articles

- 2011 **Heat shock induces mini-Cajal bodies in the *Xenopus* germinal vesicle.** Handwerker, K. E., Wu, Z., Murphy, C. and Gall, J. G.
- 2021 **The molecular basis for the autoregulation of calponin by isoform-specific C-terminal tail sequences.** Burgstaller, G., Kranewitter, W. J. and Gimona, M.
- 2031 **Integrin clustering induces kinectin accumulation.** Tran, H., Pankov, R., Tran, S. D., Hampton, B., Burgess, W. H. and Yamada, K. M.
- 2041 **Extracellular matrix histone H1 binds to perlecan, is present in regenerating skeletal muscle and stimulates myoblast proliferation.** Henriquez, J. P., Casar, J. C., Fuentealba, L., Carey, D. J. and Brandan, E.
- 2053 **Sperm plasma-membrane-associated glutathione S-transferases as gamete recognition molecules.** Hemachand, T., Gopalakrishnan, B., Salunke, D. M., Totey, S. M. and Shaha, C.
- 2067 **Clik1: a novel kinase targeted to actin stress fibers by the CLP-36 PDZ-LIM protein.** Vallenius, T. and Mäkelä, T. P.
- 2075 **Endothelial cells genetically selected from differentiating mouse embryonic stem cells incorporate at sites of neovascularization in vivo.** Marchetti, S., Gimond, C., Iljin, K., Bourcier, C., Alitalo, K., Pouyssegur, J. and Pagès, G.
- 2087 **Cytoplasmic trafficking of IGF-II mRNA-binding protein by conserved KH domains.** Nielsen, F. C., Nielsen, J., Kristensen, M. A., Koch, G. and Christiansen, J.
- 2099 **Embryonal subregion-derived stromal cell lines from novel temperature-sensitive SV40 T antigen transgenic mice support hematopoiesis.** Oostendorp, R. A. J., Medvinsky, A. J., Kusadasi, N., Nakayama, N., Harvey, K., Orelio, C., Ottersbach, K., Covey, T., Ploemacher, R. E., Saris, C. and Dzierzak, E.
- 2109 **Cdk5 regulates cell-matrix and cell-cell adhesion in lens epithelial cells.** Negash, S., Wang, H.-S., Gao, C., Ledee, D. and Zelenka, P.
- 2119 **Drac1 and Crumbs participate in amnioserosa morphogenesis during dorsal closure in *Drosophila*.** Harden, N., Ricos, M., Yee, K., Sanny, J., Langmann, C., Yu, H., Chia, W. and Lim, L.
- 2131 **Human cord blood-derived cells attain neuronal and glial features in vitro.** Buzańska, L., Machaj, E. K., Zabłocka, B., Pojda, Z. and Domańska-Janik, K.
- 2139 **The dynamics of plasma membrane PtdIns(4,5)P₂ at fertilization of mouse eggs.** Halet, G., Tunwell, R., Balla, T., Swann, K. and Carroll, J.
- 2151 **Sequential activation of individual PKC isozymes in integrin-mediated muscle cell spreading: a role for MARCKS in an integrin signaling pathway.** Disatnik, M.-H., Boutet, S. C., Lee, C. H., Mochly-Rosen, D. and Rando, T. A.
- 2165 **Regulation, mechanisms and proposed function of ferritin translocation to cell nuclei.** Thompson, K. J., Fried, M. G., Ye, Z., Boyer, P. and Connor, J. R.
- 2179 **Activation, processing and trafficking of extracellular heparanase by primary human fibroblasts.** Nadav, L., Eldor, A., Yacoby-Zeevi, O., Zamir, E., Pecker, I., Ilan, N., Geiger, B., Vlodaysky, I. and Katz, B.-Z.
- 2189 **Resistance of keratinocytes to TGFβ-mediated growth restriction and apoptosis induction accelerates re-epithelialization in skin wounds.** Amendt, C., Mann, A., Schirmacher, P. and Blessing, M.
- 2199 **Differential regulation of Rho GTPases by β1 and β3 integrins: the role of an extracellular domain of integrin in intracellular signaling.** Miao, H., Li, S., Hu, Y.-L., Yuan, S., Zhao, Y., Chen, B. P. C., Puzon-McLaughlin, W., Tarui, T., Shyy, J. Y.-J., Takada, Y., Usami, S. and Chien, S.
- 2207 **Agonist-induced phasic and tonic responses in smooth muscle are mediated by InsP₃.** McCarron, J. G., Craig, J. W., Bradley, K. N. and Muir, T. C.
- 2219 **New perspectives in PDGF receptor downregulation: the main role of phosphotyrosine phosphatases.** Chiarugi, P., Cirri, P., Taddei, M. L., Talini, D., Doria, L., Fiaschi, T., Buricchi, F., Giannoni, E., Camici, G., Raugei, G. and Ramponi, G.
- 2233 **PLC-γ1 is required for IGF-I protection from cell death induced by loss of extracellular matrix adhesion.** Chattopadhyay, A. and Carpenter, G.
- 2241 **Genetic and morphological evidence for two parallel pathways of cell-cycle-coupled cytokinesis in *Dictyostelium*.** Nagasaki, A., de Hostos, E. L. and Uyeda, T. Q. P.

Editorial

1997 **New JCS Editor.** Watt, F. M. and Sever, R.

Sticky Wicket

1999 **The alien inside me speaks, and I feel good about myself.** Caveman


Book Reviews

2001 **Nuclear Transport (Results and Problems in Cell Differentiation Vol. 35), edited by K. Weis.** Stewart, M.

2002 **Essential Molecular Biology, Vol. 2, 2nd edn, edited by T. A. Brown.** Plant, K.

Commentary

2003 **Integral membrane protein biosynthesis: why topology is hard to predict.** Ott, C. M. and Lingappa, V. R.

 Movies available on-line