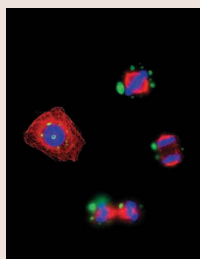


Journal of Cell Science

Volume 115 (16) 2002



Cover: U2OS cells overexpressing the centrosomal protein C-Nap1 establish functional mitotic spindles. Staining of C-Nap-1 fused to GFP (green), α -tubulin (red) and DNA (blue) is shown. For more information see the paper by Mayor et al. in this issue, pp. 3275-3284.

jcs.biologists.org

Sticky Wicket

3223 **Why are astronomy and Frankenstein the faces of science?**
Caveman

Book Reviews

3225 **Cell-Cell Interactions, 2nd Edn, edited by Fleming, T. P.**
Kowalczyk, A. P.

3226 **Apoptosis: the molecular biology of programmed cell death,**
edited by Jacobson, M. D. and McCarthy, N. Bouillet, P.

Commentaries

3227 **Stressful initiations.** Anderson, P. and Kedersha, N.

3235 **Vesicular transport: the core machinery of COPI recruitment and budding.** Nickel, W., Brügger, B. and Wieland, F. T.

Research Articles

3241 **Cell coupling and Cx43 expression in embryonic mouse neural progenitor cells.** Duval, N., Gomès, D., Calaora, V., Calabrese, A., Meda, P. and Bruzzone, R.

3253 **Developmentally regulated trafficking of the lysosomal membrane protein p67 in *Trypanosoma brucei*.** Alexander, D. L., Schwartz, K. J., Balber, A. E. and Bangs, J. D.

3265 **The DC electrical-field-induced Ca^{2+} response and growth stimulation of multicellular tumor spheroids are mediated by ATP release and purinergic receptor stimulation.** Sauer, H., Stanelle, R., Hescheler, J. and Wartenberg, M.

3275 **The mechanism regulating the dissociation of the centrosomal protein C-Nap1 from mitotic spindle poles.** Mayor, T., Hacker, U., Stierhof, Y.-D. and Nigg, E. A.

3285 **Staufen2 isoforms localize to the somatodendritic domain of neurons and interact with different organelles.** Duchaine, T. F., Hemraj, I., Furic, L., Deitinghoff, A., Kiebler, M. A. and DesGroseillers, L.

3297 **Three-dimensional organization of active rRNA genes within the nucleolus.** Cheutin, T., O'Donohue, M.-F., Beorchia, A., Vandelaer, M., Kaplan, H., Deféver, B., Ploton, D. and Thiry, M.

3309 **Annexin 6 is a putative cell surface receptor for chondroitin sulfate chains.** Takagi, H., Asano, Y., Yamakawa, N., Matsumoto, I. and Kimata, K.

3319 **Daxx and histone deacetylase II associate with chromatin through an interaction with core histones and the chromatin-associated protein Dek.** Hollenbach, A. D., McPherson, C. J., Mientjes, E. J., Iyengar, R. and Grosveld, G.

3331 **Invasive behaviour of glioblastoma cell lines is associated with altered organisation of the cadherin-catenin adhesion system.** Perego, C., Vanoni, C., Massari, S., Raimondi, A., Pola, S., Cattaneo, M. G., Francolini, M., Vicentini, L. M. and Pietrini, G.

3341 **Plasma membrane targeting of SNAP-25 increases its local concentration and is necessary for SNARE complex formation and regulated exocytosis.** Koticha, D. K., McCarthy, E. E. and Baldini, G.



Movies available on-line