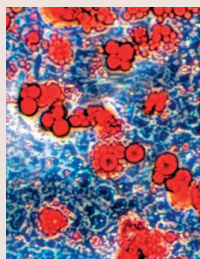


Journal of Cell Science

Volume 117 (3) 2004



Cover: The image shows *Runx2*^{-/-} chondrocytes double-stained with Alcian blue and oil red O. Cartilage-specific proteoglycan is stained blue and neutral fat is stained red. *Runx2*^{-/-} chondrocytes lose chondrocyte phenotypes and differentiate into adipocytes during culture. See article by H. Enomoto et al. (pp. 417-425).

jcs.biologists.org

Editorial

369 **End of an era.** Watt, F. M.

Women in Cell Science

371 **Joyce Taylor-Papadimitriou.** Watt, F. M.

Commentaries

373 **The role of the CD44 transmembrane and cytoplasmic domains in co-ordinating adhesive and signalling events.** Thorne, R. F., Legg, J. W. and Isacke, C. M.

381 **Trans-Golgi network delivery of synaptic proteins in synaptogenesis.** Sytnyk, V., Leshchyns'ka, I., Dityatev, A. and Schachner, M.

389 **Forespore membrane assembly in yeast: coordinating SPBs and membrane trafficking.** Shimoda, C.



Research Articles

397 **Electrical stimulation directly induces pre-angiogenic responses in vascular endothelial cells by signaling through VEGF receptors.** Zhao, M., Bai, H., Wang, E., Forrester, J. V. and McCaig, C. D.

407 **Integrin-linked kinase regulates vascular morphogenesis induced by vascular endothelial growth factor.** Kaneko, Y., Kitazato, K. and Basaki, Y.

417 ***Runx2* deficiency in chondrocytes causes adipogenic changes in vitro.** Enomoto, H., Furuichi, T., Zanma, A., Yamana, K., Yoshida, C., Sumitani, S., Yamamoto, H., Enomoto-Iwamoto, M., Iwamoto, M. and Komori, T.

427 **Restoration of full-length adenomatous polyposis coli (APC) protein in a colon cancer cell line enhances cell adhesion.** Faux, M. C., Ross, J. L., Meeker, C., Johns, T., Ji, H., Simpson, R. J., Layton, M. J. and Burgess, A. W.

441 **The role of annexin 2 in osteoblastic mineralization.** Gillette, J. M. and Nielsen-Preiss, S. M.

451 **Dispersal of Golgi matrix proteins during mitotic Golgi disassembly.** Puri, S., Telfer, H., Velliste, M., Murphy, R. F. and Linstedt, A. D.

457 **Maternally expressed and partially redundant β -tubulins in *Caenorhabditis elegans* are autoregulated.** Ellis, G. C., Phillips, J. B., O'Rourke, S., Lyczak, R. and Bowerman, B.

465 **The Yin Yang-1 (YY1) protein undergoes a DNA-replication-associated switch in localization from the cytoplasm to the nucleus at the onset of S phase.** Palko, L., Bass, H. W., Beyrouthy, M. J. and Hurt, M. M.

477 **Reciprocal regulation of urokinase receptor (CD87)-mediated cell adhesion by plasminogen activator inhibitor-1 and protease nexin-1.** Kanse, S. M., Chavakis, T., Al-Fakhri, N., Hersemeyer, K., Monard, D. and Preissner, K. T.

487 **Characterization of B-type cyclins in the smut fungus *Ustilago maydis*: roles in morphogenesis and pathogenicity.** García-Muse, T., Steinberg, G. and Pérez-Martín, J.

507 **Phosphorylation of serine 262 in the gap junction protein connexin-43 regulates DNA synthesis in cell-cell contact forming cardiomyocytes.** Doble, B. W., Dang, X., Ping, P., Fandrich, R. R., Nickel, B. E., Jin, Y., Cattini, P. A. and Kardami, E.



Movies online