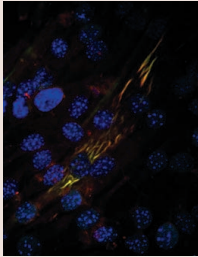


Journal of Cell Science

Volume 117 (4) 2004



Cover: Chaperone-associated myosin maturation complexes (yellow) detected in striated muscle cells. This confocal optical projection of differentiating mouse muscle cells reveals partially folded myosin (green) assembled into filaments and colocalizing with the molecular chaperone Hsp90 (red). Nuclei are stained blue with DAPI. See article by Srikakulam and Winkelmann (pp. 641-652).

jcs.biologists.org

Cell Science at a Glance

515 **DNA repair.** Fleck, O. and Nielsen, O.

Women in Cell Science

519 **Anna Starzinski-Powitz.** Watt, F. M.

Commentaries

521 **Model organisms lead the way to protein palmitoyltransferases.** Linder, M. E. and Deschenes, R. J.

527 **Planar polarity from flies to vertebrates.** Fanto, M. and McNeill, H.

Research Articles

- 535 **Gene switching in *Amoeba proteus* caused by endosymbiotic bacteria.** Jeon, T. J. and Jeon, K. W.
- 545 **Swm1p subunit of the APC/cyclosome is required for activation of the daughter-specific gene expression program mediated by Ace2p during growth at high temperature in *Saccharomyces cerevisiae*.** Ufano, S., Pablo, M. E., Calzada, A., del Rey, F. and Vázquez de Aldana, C. R.
- 559 **Mechanism of recruiting Sec6/8 (exocyst) complex to the apical junctional complex during polarization of epithelial cells.** Yeaman, C., Grindstaff, K. K. and Nelson, W. J.
- 571 **Murine tenascin-W: a novel mammalian tenascin expressed in kidney and at sites of bone and smooth muscle development.** Scherberich, A., Tucker, R. P., Samandari, E., Brown-Luedi, M., Martin, D. and Chiquet-Ehrismann, R.
- 583 **Missense mutations in the globular tail of myosin-Va in *dilute* mice partially impair binding of Slac2-a/melanophilin.** Fukuda, M. and Kuroda, T. S.
- 593 **Trafficking of β_2 -adrenergic receptors: insulin and β -agonists regulate internalization by distinct cytoskeletal pathways.** Shumay, E., Gavi, S., Wang, H.-y. and Malbon, C. C.
- 601 **A domain of Rad9 specifically required for activation of Chk1 in budding yeast.** Blankley, R. T. and Lydall, D.
- 609 **The tyrosine phosphatase DEP-1 induces cytoskeletal rearrangements, aberrant cell-substratum interactions and a reduction in cell proliferation.** Kellie, S., Craggs, G., Bird, I. N. and Jones, G. E.
- 619 **A role for the spectrin superfamily member Syne-1 and kinesin II in cytokinesis.** Fan, J. and Beck, K. A.
- 631 **Mevalonate kinase is a cytosolic enzyme in humans.** Hogenboom, S., Tuyp, J. J. M., Espeel, M., Koster, J., Wanders, R. J. A. and Waterham, H. R.
- 641 **Chaperone-mediated folding and assembly of myosin in striated muscle.** Srikakulam, R. and Winkelmann, D. A.