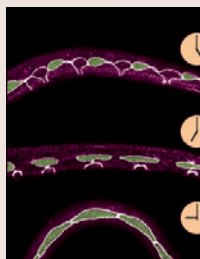


# Journal of Cell Science

Volume 118 (1) 2005



**Cover:** Seam cells of the lateral epidermis of *Caenorhabditis elegans* quickly (within 2 hours) restore mutual adherens-junction contacts that had been interrupted by a fusion of their anterior daughters with the surrounding syncytium. A nuclear receptor NHR-25 is necessary for the contact renewal. Adherens junctions were stained with a DLG-1 antibody; seam cells are pseudocolored in green. See article by M. Šilhánková et al. (pp. 223-232).

[jcs.biologists.org](http://jcs.biologists.org)

## Commentaries

- 1 **G2 damage checkpoints: what is the turn-on?** O'Connell, M. J. and Cimprich, K. A.
- 7 **The molecular machinery of autophagy: unanswered questions.** Klionsky, D. J.
- 19 **Cofilin takes the lead.** DesMarais, V., Ghosh, M., Eddy, R. and Condeelis, J.

## Research Articles

- 27 **Expression of connexins during differentiation and regeneration of skeletal muscle: functional relevance of connexin43.** Araya, R., Eckardt, D., Maxeiner, S., Krüger, O., Theis, M., Willecke, K. and Sáez, J. C.
- 39 **Interaction of 14-3-3 protein with Chk1 affects localization and checkpoint function.** Dunaway, S., Liu, H.-Y. and Walworth, N. C.
- 51 **Multiple rows of cells behind an epithelial wound edge extend cryptic lamellipodia to collectively drive cell-sheet movement.** Farooqui, R. and Fenteany, G.
- 65 **Ice2p is important for the distribution and structure of the cortical ER network in *Saccharomyces cerevisiae*.** Estrada de Martin, P., Du, Y., Novick, P. and Ferro-Novick, S.
- 79 **Cortactin regulates cell migration through activation of N-WASP.** Kowalski, J. R., Egile, C., Gil, S., Snapper, S. B., Li, R. and Thomas, S. M.
- 89 **Valproate protects cells from ER stress-induced lipid accumulation and apoptosis by inhibiting glycogen synthase kinase-3.** Kim, A. J., Shi, Y., Austin, R. C. and Werstuck, G. H.
- 101 **Ciz1 promotes mammalian DNA replication.** Coverley, D., Marr, J. and Ainscough, J.
- 113 **Interplay between paracrine signaling and gap junctional communication in ovarian follicles.** Gittens, J. E. I., Barr, K. J., Vanderhyden, B. C. and Kidder, G. M.
- 123 **Stroma is not a major target in DMBA-mediated tumorigenesis of mouse mammary preneoplasia.** Medina, D. and Kittrell, F.
- 129 **Localisation of human Y-family DNA polymerase  $\kappa$ : relationship to PCNA foci.** Ogi, T., Kannouche, P. and Lehmann, A. R.
- 137 **Absence of Dp71 in mdx<sup>3cv</sup> mouse spermatozoa alters flagellar morphology and the distribution of ion channels and nNOS.** Hernández-González, E. O., Mornet, D., Rendon, A. and Martínez-Rojas, D.
- 147 **The metalloproteinase MT1-MMP is required for normal development and maintenance of osteocyte processes in bone.** Holmbeck, K., Bianco, P., Pidoux, I., Inoue, S., Billingham, R. C., Wu, W., Chrysovergis, K., Yamada, S., Birkedal-Hansen, H. and Poole, A. R.
- 157 **The novel fission yeast (1,3) $\beta$ -D-glucan synthase catalytic subunit Bgs4p is essential during both cytokinesis and polarized growth.** Cortés, J. C. G., Carnero, E., Ishiguro, J., Sánchez, Y., Durán, A. and Ribas, J. C.
- 175 **Activity and subcellular compartmentalization of peroxisome proliferator-activated receptor  $\alpha$  are altered by the centrosome-associated protein CAP350.** Patel, H., Truant, R., Rachubinski, R. A. and Capone, J. P.
- 187 **The *Drosophila* Bub3 protein is required for the mitotic checkpoint and for normal accumulation of cyclins during G2 and early stages of mitosis.** Lopes, C. S., Sampaio, P., Williams, B., Goldberg, M. and Sunkel, C. E.
- 199 **Nak1 interacts with Hob1 and Wsp1 to regulate cell growth and polarity in *Schizosaccharomyces pombe*.** Huang, T. Y., Renaud-Young, M. and Young, D.
- 211 **PARP-1 and PARP-2 interact with nucleophosmin/B23 and accumulate in transcriptionally active nucleoli.** Meder, V. S., Boeglin, M., de Murcia, G. and Schreiber, V.
- 223 **Nuclear receptor NHR-25 is required for cell-shape dynamics during epidermal differentiation in *Caenorhabditis elegans*.** Šilhánková, M., Jindra, M. and Asahina, M.
- 233 **RNA association and nucleocytoplasmic shuttling by ataxin-1.** Irwin, S., Vandelft, M., Pinchev, D., Howell, J. L., Graczyk, J., Orr, H. T. and Truant, R.
- 243 **Oxidative stress inactivates VEGF survival signaling in retinal endothelial cells via PI 3-kinase tyrosine nitration.** El-Remessy, A. B., Bartoli, M., Platt, D. H., Fulton, D. and Caldwell, R. B.
- 253 **A synthetic glycosaminoglycan mimetic (RGTA) modifies natural glycosaminoglycan species during myogenesis.** Barbosa, I., Morin, C., Garcia, S., Duchesnay, A., Oudghir, M., Jenniskens, G., Miao, H.-Q., Guimond, S., Carpentier, G., Cebrian, J., Caruelle, J.-P., van Kuppevelt, T., Turnbull, J., Martelly, I. and Papy-Garcia, D.