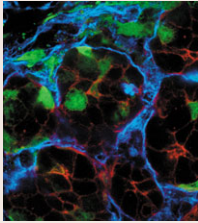


Journal of Cell Science

Volume 119 (16) 2006



Cover: Salivary gland used for live-cell organ imaging. Merged image from a postnatal day 1 mouse salivary gland fixed and immunostained after time-lapse confocal microscopy showing epithelial cells labeled with GFP (green), fibronectin labeled with Alexa Fluor-647 (blue), and E-cadherin labeled with an anti-E-cadherin antibody (red). See article by Larsen (pp. 3376-3384).

jcs.biologists.org

Research Articles

- 3273 **Complex biosynthesis of the muscle-enriched iron regulator RGMc.** Kuninger, D., Kuns-Hashimoto, R., Kuzmickas, R. and Rotwein, P.
- 3284 **Promyelocytic leukaemia nuclear bodies are predetermined processing sites for damaged DNA.** Bøe, S. O., Haave, M., Jul-Larsen, Å., Grudic, A., Bjerkvig, R. and Lønning, P. E.
- 3296 **Efficient ADAM22 surface expression is mediated by phosphorylation-dependent interaction with 14-3-3 protein family members.** Gödde, N. J., D'Abaco, G. M., Paradiso, L. and Novak, U.
- 3306 **Alleles of *afd1* dissect REC8 functions during meiotic prophase I.** Golubovskaya, I. N., Hamant, O., Timofejeva, L., Wang, C.-J. R., Braun, D., Meeley, R. and Cande, W. Z.
- 3316 **Palladin binds to Eps8 and enhances the formation of dorsal ruffles and podosomes in vascular smooth muscle cells.** Goicoechea, S., Arneman, D., Disanza, A., Garcia-Mata, R., Scita, G. and Otey, C. A.
- 3325 **Cyclin-B1-mediated inhibition of excess separase is required for timely chromosome disjunction.** Holland, A. J. and Taylor, S. S.
- 3337 **Brain-specific BNIP-2-homology protein Caytaxin relocates glutaminase to neurite terminals and reduces glutamate levels.** Buschdorf, J. P., Chew, L. L., Zhang, B., Cao, Q., Liang, F.-Y., Liou, Y.-C., Zhou, Y. T. and Low, B. C.
- 3351 **Casein kinase 2 inhibition decreases hypoxia-inducible factor-1 activity under hypoxia through elevated p53 protein level.** Hubert, A., Paris, S., Piret, J.-P., Ninane, N., Raes, M. and Michiels, C.
- 3363 **Inositol 1,4,5-trisphosphate supports the arrhythmogenic action of endothelin-1 on ventricular cardiac myocytes.** Proven, A., Roderick, H. L., Conway, S. J., Berridge, M. J., Horton, J. K., Capper, S. J. and Bootman, M. D.
- 3376 **Cell and fibronectin dynamics during branching morphogenesis.** Larsen, M., Wei, C. and Yamada, K. M.
- 3385 **Regulation of epithelial wound closure and intercellular adhesion by interaction of AF6 with actin cytoskeleton.** Lorger, M. and Moelling, K.
- 3399 ***centrosomin's beautiful sister (cbs)* encodes a GRIP-domain protein that marks Golgi inheritance and functions in the centrosome cycle in *Drosophila*.** Eisman, R. C., Stewart, N., Miller, D. and Kaufman, T. C.
- 3413 **RhoA-kinase coordinates F-actin organization and myosin II activity during semaphorin-3A-induced axon retraction.** Gallo, G.
- 3424 **Activation of urokinase receptor by a novel interaction between the connecting peptide region of urokinase and $\alpha v \beta 5$ integrin.** Franco, P., Vocca, I., Carriero, M. V., Alfano, D., Cito, L., Longanesi-Cattani, I., Grieco, P., Ossowski, L. and Stoppelli, M. P.
- 3435 **Analysis of Connexin43 phosphorylation at S325, S328 and S330 in normoxic and ischemic heart.** Lampe, P. D., Cooper, C. D., King, T. J. and Burt, J. M.
- 3443 **Conserved and specific functions of axoneme components in trypanosome motility.** Branche, C., Kohl, L., Toutirais, G., Buisson, J., Cosson, J. and Bastin, P.
- 3456 **Competition and cooperation between tenascin-R, lecticans and contactin 1 regulate neurite growth and morphology.** Zacharias, U. and Rauch, U.
- 3467 **A computational model of intracellular oxygen sensing by hypoxia-inducible factor HIF1 α .** Qutub, A. A. and Popel, A. S.

Cell Science at a Glance

3261 **Cell surface actin remodeling.** Stossel, T. P., Fenteany, G. and Hartwig, J. H.

Commentary

3265 **Farnesylated lamins, progeroid syndromes and farnesyl transferase inhibitors.** Rusiñol, A. E. and Sinensky, M. S.