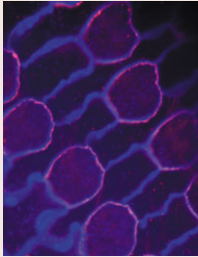


Journal of Cell Science

Volume 119 (23) 2006



Cover: Confocal optical section along the apical surface of the organ of Corti sensory epithelium labeled for ZO-1 (blue) and claudin-14 (red/pink). Claudin 14 outlines the heterotypic junction between outer hair cells and Deiters' cells. This heterotypic junction consists of a unique tight junction with distinct sub-domain organization and adherens junction features. See paper by Nunes et al. (pp. 4819-4827).

jcs.biologists.org

Short Report

- 4811 **A systematic RNA interference screen reveals a cell migration gene network in *C. elegans*.** Cram, E. J., Shang, H. and Schwarzbauer, J. E.

Research Articles

- 4819 **Distinct subdomain organization and molecular composition of a tight junction with adherens junction features.** Nunes, F. D., Lopez, L. N., Lin, H. W., Davies, C., Azevedo, R. B., Gow, A. and Kachar, B.
- 4828 **Convergence of *Igf2* expression and adhesion signalling via RhoA and p38 MAPK enhances myogenic differentiation.** Lovett, F. A., Gonzalez, I., Salih, D. A. M., Cobb, L. J., Tripathi, G., Cosgrove, R. A., Murrell, A., Kilshaw, P. J. and Pell, J. M.
- 4841 **Keratinocyte growth factor protects epidermis and hair follicles from cell death induced by UV irradiation, chemotherapeutic or cytotoxic agents.** Braun, S., Krampert, M., Bodó, E., Kümin, A., Born-Berclaz, C., Paus, R. and Werner, S.
- 4850 **β -catenin relieves I-mfa-mediated suppression of LEF-1 in mammalian cells.** Pan, W., Jia, Y., Huang, T., Wang, J., Tao, D., Gan, X. and Li, L.
- 4857 **The DNA helicase ChlR1 is required for sister chromatid cohesion in mammalian cells.** Parish, J. L., Rosa, J., Wang, X., Lahti, J. M., Doxsey, S. J. and Androphy, E. J.
- 4866 **Characterization of the Rab8-specific membrane traffic route linked to protrusion formation.** Hattula, K., Furuholm, J., Tikkanen, J., Tanhuanpää, K., Laakkonen, P. and Peränen, J.
- 4878 **Involvement of the Src-cortactin pathway in podosome formation and turnover during polarization of cultured osteoclasts.** Luxenburg, C., Parsons, J. T., Addadi, L. and Geiger, B.
- 4889 **Three-dimensional analysis of mitosis and cytokinesis in the binucleate parasite *Giardia intestinalis*.** Sagolla, M. S., Dawson, S. C., Mancuso, J. J. and Cande, W. Z.

Sticky Wicket

- 4791 **Fake! Part I.** Mole

Cell Science at a Glance

- 4793 **Circadian oscillators of *Drosophila* and mammals.** Yu, W. and Hardin, P. E.

Commentaries

- 4797 **Differentiation of columnar epithelia: the hensin pathway.** Vijayakumar, S., Takito, J., Gao, X., Schwartz, G. J. and Al-Awqati, Q.
- 4803 **All in the CCN family: essential matricellular signaling modulators emerge from the bunker.** Leask, A. and Abraham, D. J.

- 4901 **Targeted ablation of Arnt in mouse epidermis results in profound defects in desquamation and epidermal barrier function.** Geng, S., Mezentsev, A., Kalachikov, S., Raith, K., Roop, D. R. and Panteleyev, A. A.
- 4913 **Identification of a novel protein that regulates mitochondrial fusion by modulating mitofusin (Mfn) protein function.** Eura, Y., Ishihara, N., Oka, T. and Mihara, K.
- 4926 **ER vesicles and mitochondria move and communicate at synapses.** Mironov, S. L. and Symonchuk, N.
- 4935 **The 46-kDa mannose 6-phosphate receptor does not depend on endosomal acidification for delivery of hydrolases to lysosomes.** Probst, O. C., Ton, P., Svoboda, B., Gannon, A., Schuhmann, W., Wieser, J., Pohlmann, R. and Mach, L.
- 4944 **The conserved role of Smu1 in splicing is characterized in its mammalian temperature-sensitive mutant.** Sugaya, K., Hongo, E., Ishihara, Y. and Tsuji, H.
- 4952 **Dynamic regulation of ERK2 nuclear translocation and mobility in living cells.** Costa, M., Marchi, M., Cardarelli, F., Roy, A., Beltram, F., Maffei, L. and Ratto, G. M.
- 4964 **The RNA-binding protein Rrm4 is essential for polarity in *Ustilago maydis* and shuttles along microtubules.** Becht, P., König, J. and Feldbrügge, M.
- 4974 **New insights into the molecular basis of desmoplakin- and desmin-related cardiomyopathies.** Lapouge, K., Fontao, L., Champlaud, M.-F., Jaunin, F., Frias, M. A., Favre, B., Paulin, D., Green, K. J. and Borradori, L.
- 4986 **Sequential implication of the mental retardation proteins ARHGEF6 and PAK3 in spine morphogenesis.** Nodé-Langlois, R., Muller, D. and Boda, B.
- 4994 **Sphingosylphosphorylcholine induces differentiation of human mesenchymal stem cells into smooth-muscle-like cells through a TGF- β -dependent mechanism.** Jeon, E. S., Moon, H. J., Lee, M. J., Song, H. Y., Kim, Y. M., Bae, Y. C., Jung, J. S. and Kim, J. H.